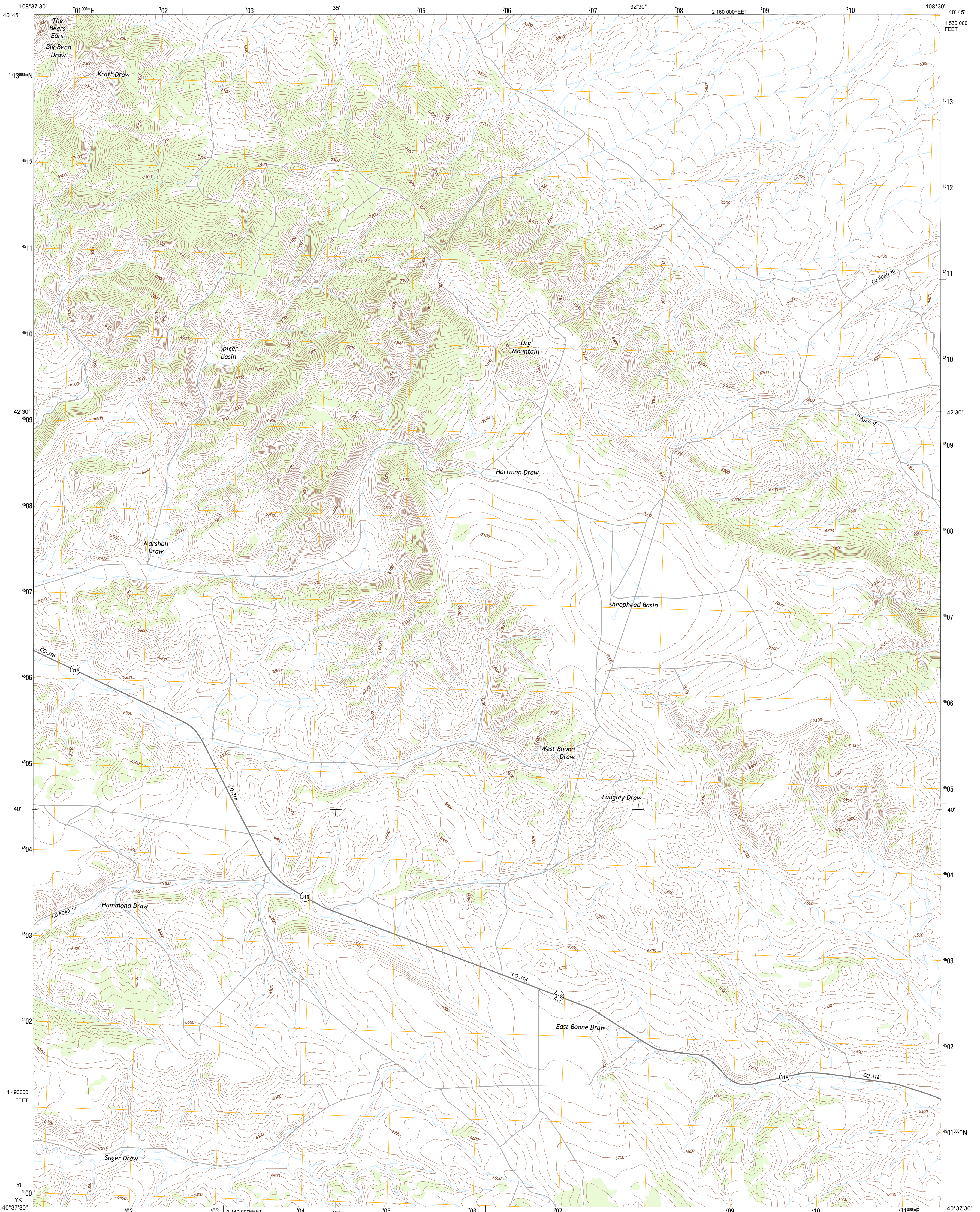




U.S. DEPARTMENT OF THE INTERIOR
U. S. GEOLOGICAL SURVEY

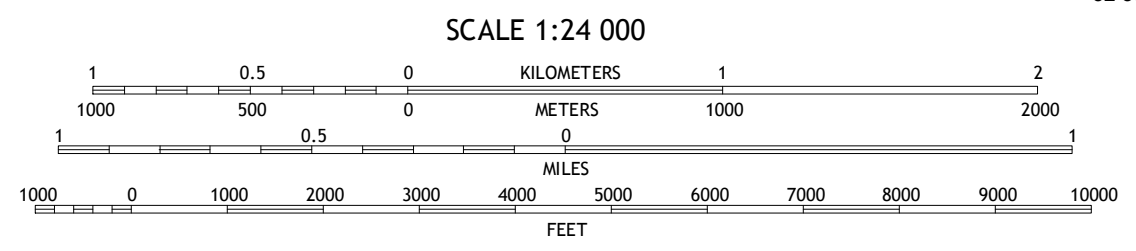
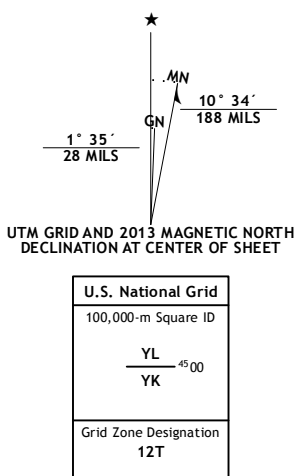


SHEEPHEAD BASIN QUADRANGLE
COLORADO-MOFFAT CO.
7.5-MINUTE SERIES

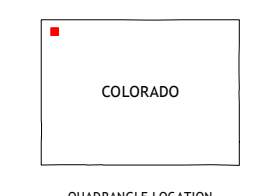


Produced by the United States Geological Survey
North American Datum of 1983 (NAD83)
World Geodetic System of 1984 (WGS84), Projection and
1 000-meter grid: Universal Transverse Mercator, Zone 12T
10 000-foot ticks: Colorado Coordinate System of 1983 (north zone)

Imagery.....NAIP, July 2011
Roads.....©2006-2012 TomTom
Names.....©2006-2012 TomTom
Hydrography.....National Hydrography Dataset, 2011
Contours.....National Elevation Dataset, 2003
Boundaries.....BWC, BGC, USGS, 1972-2012
Public Land Survey System.....BLM, 2011

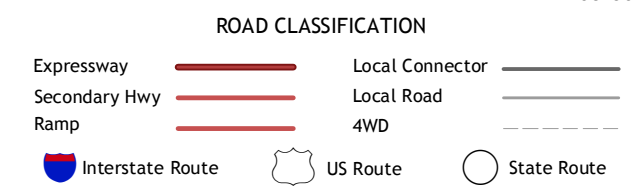


CONTOUR INTERVAL 20 FEET
NORTH AMERICAN VERTICAL DATUM OF 1988
This map was produced to conform with the
National Geospatial Program US Topo Product Standard, 2011.
A metadata file associated with this product is draft version 0.6.14



QUADRANGLE LOCATION

Irish Canyon	G Spring	Shepherd Springs
Wermillion Mesa	Sheephead Basin	Clay Buttes
Greystone	Limestone Hill	Lone Mountain



SHEEPHEAD BASIN, CO
2013

ADJOINING 7.5 QUADRANGLES