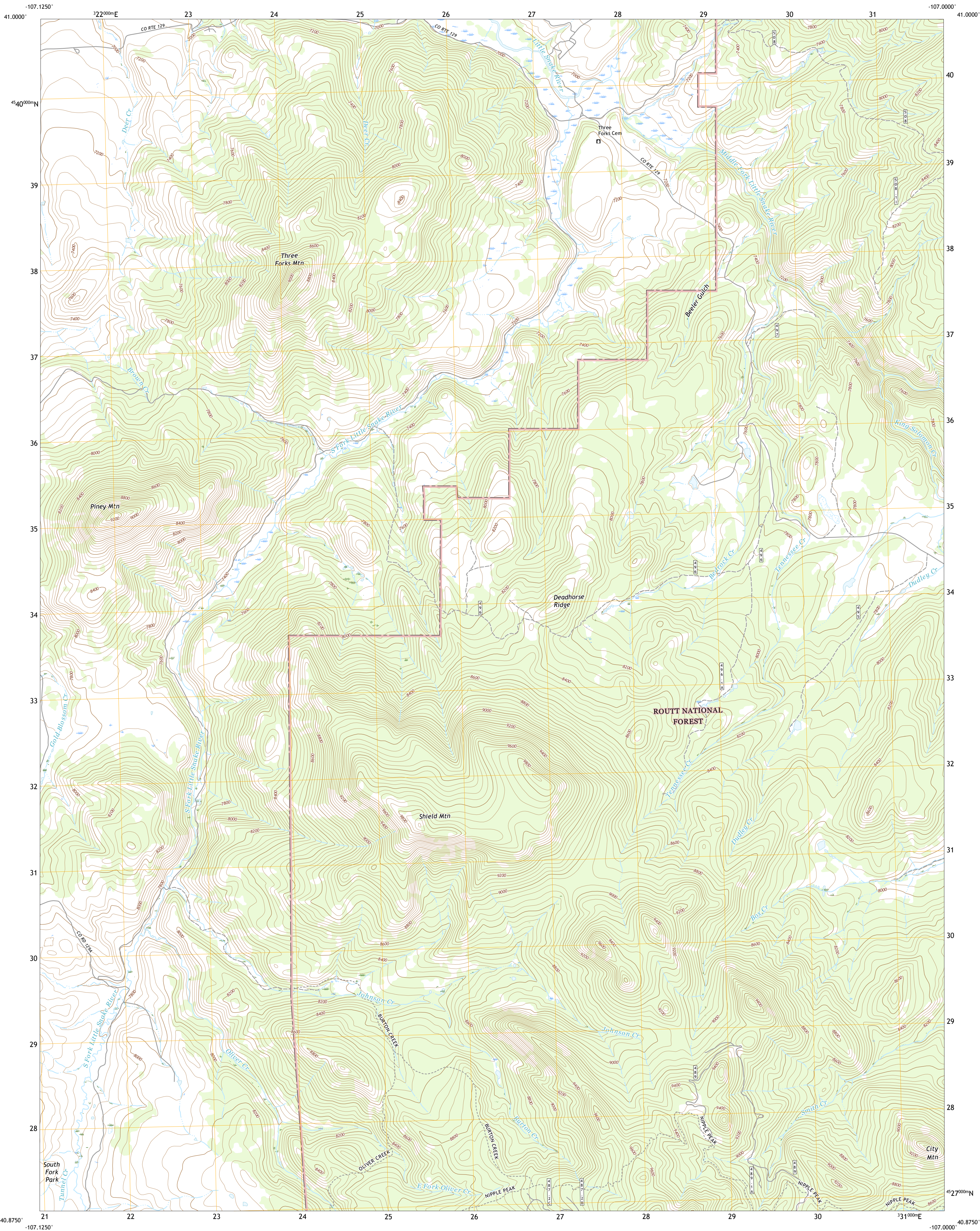




U.S. DEPARTMENT OF THE INTERIOR  
U.S. GEOLOGICAL SURVEY

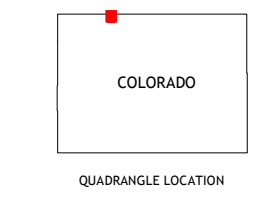
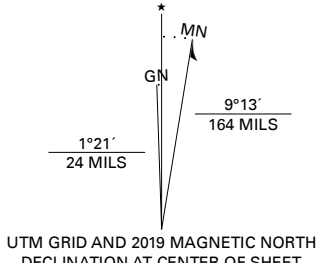


SHIELD MOUNTAIN QUADRANGLE  
COLORADO - ROUTT COUNTY  
7.5-MINUTE SERIES



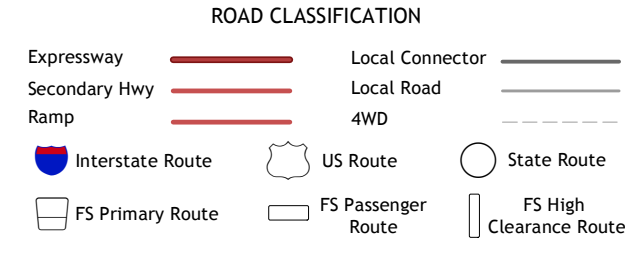
**Produced by the United States Geological Survey**  
North American Datum of 1983 (NAD83)  
World Geodetic System of 1984 (WGS84). Projection and  
1 000-meter grid: Universal Transverse Mercator, Zone 13T  
This map is not a legal document. Boundaries may be  
generalized for this map scale. Private lands within government  
reservations may not be shown. Obtain permission before  
entering private lands.

Imagery.....NAIP, October 2017 - January 2018  
Roads.....U.S. Census Bureau, 2016  
Roads within US Forest Service Lands.....FS Topo  
Data with limited Forest Service updates, 2013 - 2017  
Names.....GNIS, 1978 - 2018  
Hydrography.....National Hydrography Dataset, 2003 - 2019  
Contours.....National Elevation Dataset, 2004  
Boundaries.....Multiple sources: see metadata file 2017 - 2018  
Public Land Survey System.....BLM, 2018  
Wetlands.....FWS National Wetlands Inventory 1980 - 1984



1	2	3
4	5	6
7	8	9

1 Cottonwood Rim  
2 Fletcher Peak  
3 Solomon Creek  
4 Tumble Mountain  
5 Elkhorn Mountain  
6 Bears Ears Peaks  
7 Meaden Peak  
8 Hahn Peak



Check with local Forest Service unit  
for current travel conditions and restrictions.

**SHIELD MOUNTAIN, CO**  
2019

