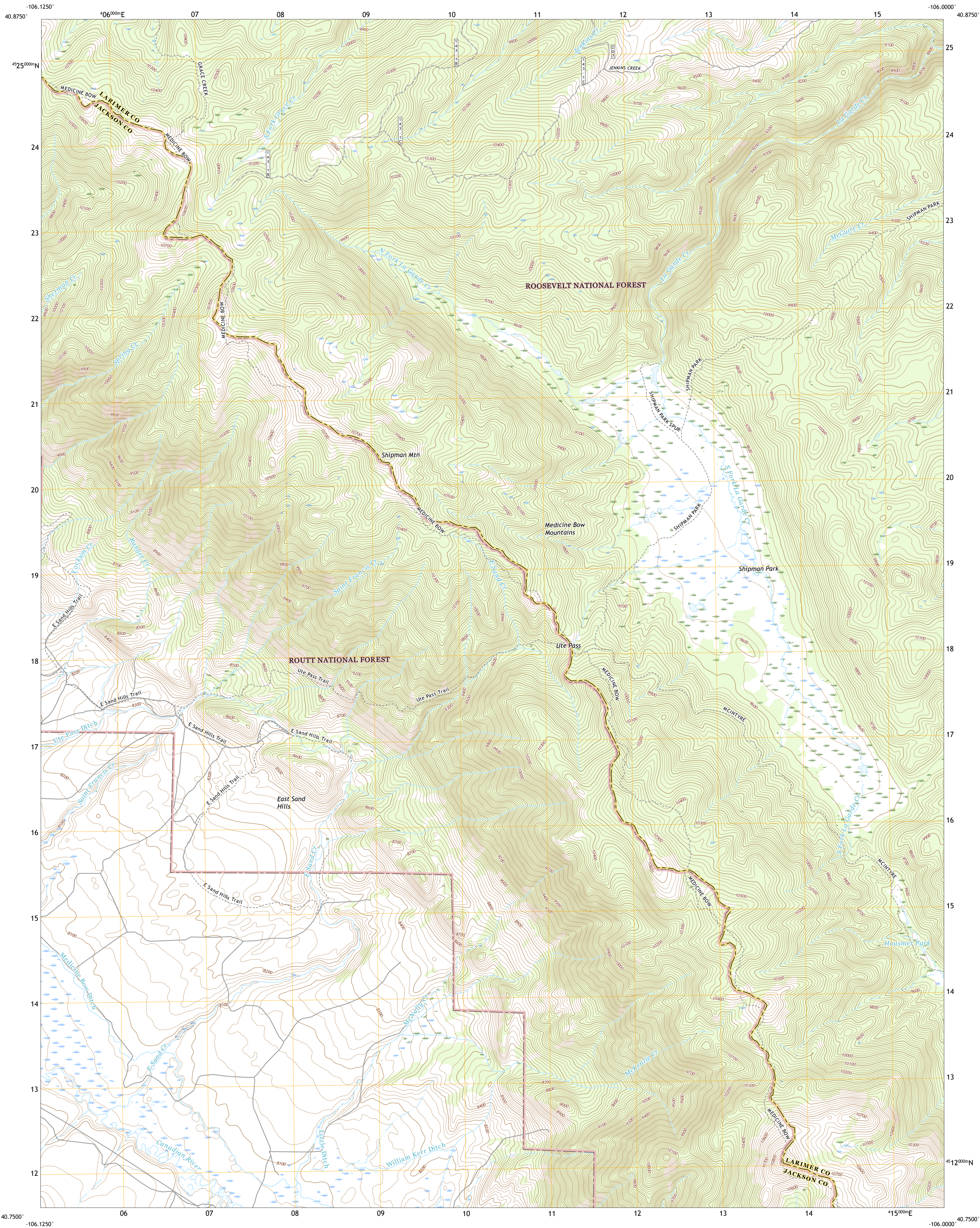




U.S. DEPARTMENT OF THE INTERIOR  
U.S. GEOLOGICAL SURVEY



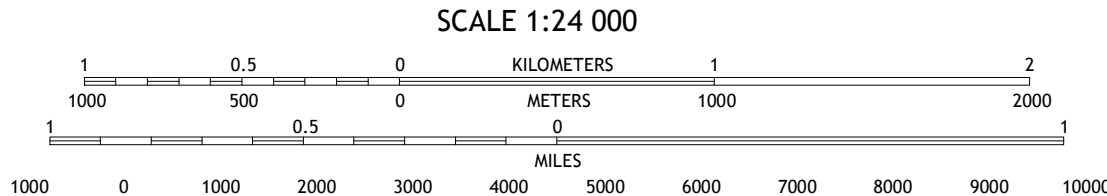
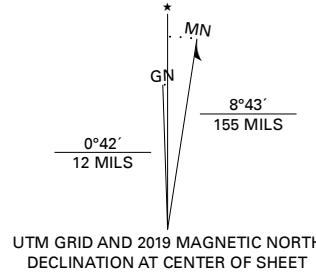
SHIPMAN MOUNTAIN QUADRANGLE  
COLORADO  
7.5-MINUTE SERIES



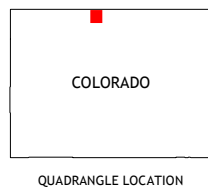
Produced by the United States Geological Survey

North American Datum of 1983 (NAD83)  
World Geodetic System of 1984 (WGS84). Projection and  
1 000-meter grid: Universal Transverse Mercator, Zone 13T  
This map is not a legal document. Boundaries may be  
generalized for this map scale. Private lands within government  
reservations may not be shown. Obtain permission before  
entering private lands.

Imagery.....N.A.P., August 2017 - January 2018  
Roads.....U.S. Census Bureau, 2016  
Roads within US Forest Service Lands.....FSTopo, 2016  
Names.....with limited Forest Service updates, 2013 - 2016  
Hydrography.....GHS, 1978 - 2017  
Contours.....National Hydrography Dataset, 2004 - 2019  
Boundaries.....National Elevation Dataset, 2001 - 2003  
Public Land Survey System.....Multiple sources; see metadata file  
Wetlands.....BLM, 2018  
Wetlands.....FWS National Wetlands Inventory 1975 - 1983



CONTOUR INTERVAL 20 FEET  
NORTH AMERICAN VERTICAL DATUM OF 1988  
This map was produced to conform with the  
National Geospatial Program US Topo Product Standard, 2011.  
A metadata file associated with this product is draft version 0.6.18



1	2	3	1 Kings Canyon
4	5	3 Crazy Mountain	
6	7	4 Eagle Hill	
		5 Glendevy	
		6 Gould NW	
		7 Johnny Moore Mountain	
		8 Rawah Lakes	

ADJOINING QUADRANGLES

ROAD CLASSIFICATION	
Expressway	Local Connector
Secondary Hwy	Local Road
Ramp	4WD
Interstate Route	US Route
FS Primary Route	State Route
FS Passenger Route	FS High Clearance Route

Check with local Forest Service unit  
for current travel conditions and restrictions.

SHIPMAN MOUNTAIN, CO  
2019

