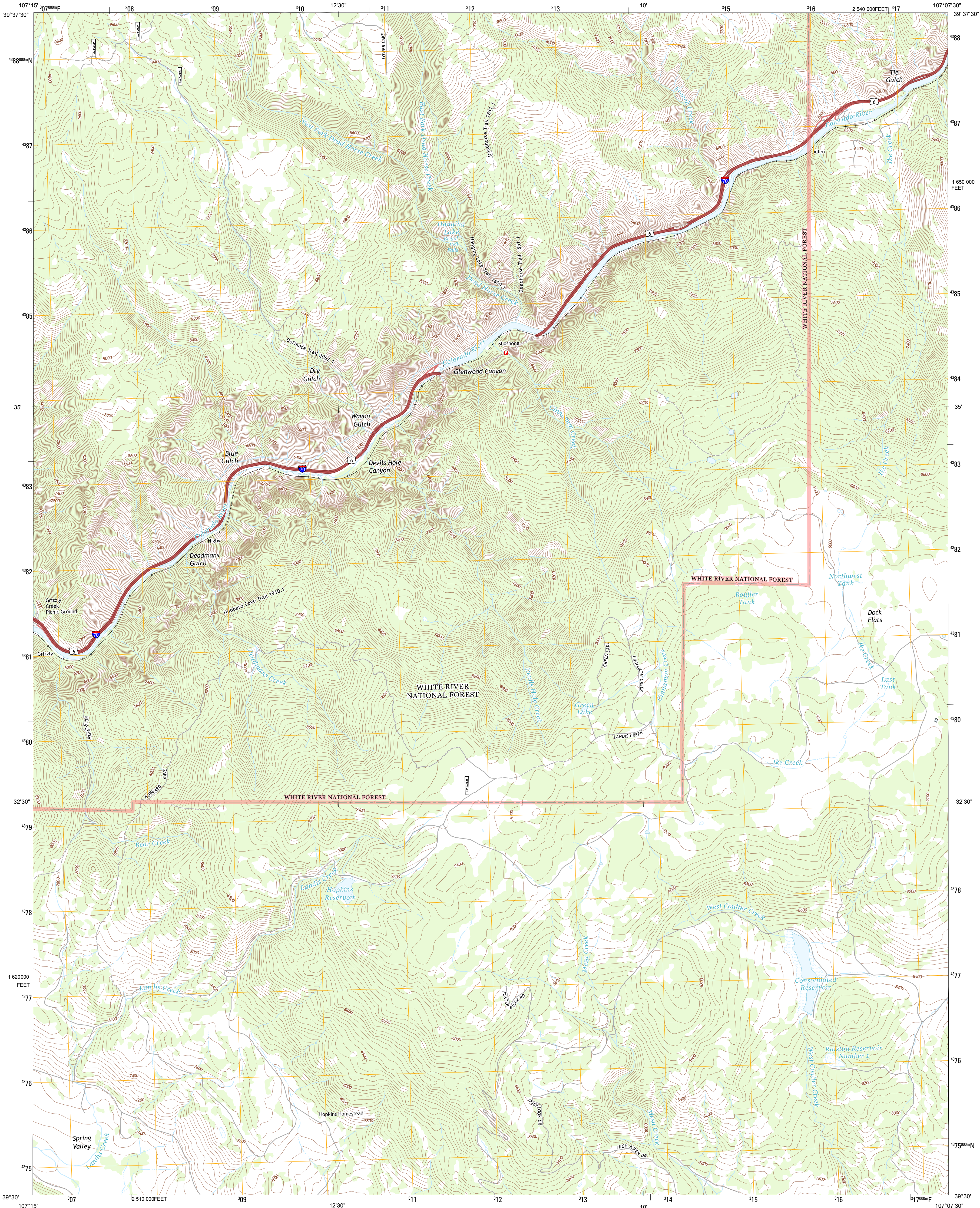




U.S. DEPARTMENT OF THE INTERIOR
U. S. GEOLOGICAL SURVEY



SHOSHONE QUADRANGLE
COLORADO-GARFIELD CO.
7.5-MINUTE SERIES



Produced by the United States Geological Survey
North American Datum of 1983 (NAD83)
World Geodetic System of 1984 (WGS84)
1 000-meter grid: Universal Transverse Mercator, Zone 13S
10 000-foot ticks: Colorado Coordinate System of 1983 (central zone)

Imagery.....NAIP, August 2011
Roads.....©2006-2012, TomTom
Roads within US Forest Service Lands.....FSTopo Data with limited Forest Service updates, 2013
Names.....GNIS, 2013
Hydrography.....National Hydrography Dataset, 2011
Contours.....National Elevation Dataset, 2004
Boundaries.....Census, IBWC, IBC, USGS, 1972 - 2012
Public Land Survey System.....BLM, 2011

UTM GRID AND 2011 MAGNETIC NORTH DECLINATION AT CENTER OF SHEET
11° 24' 25" N
9° 48' 17" E
174 MILS

U.S. National Grid
100,000-m Square ID
CD
Grid Zone Designation
13S

SCALE 1:24 000
1 000 0 0.5 1 2 KILOMETERS
1000 0 500 1000 2000 METERS
1 0 1000 2000 3000 4000 5000 6000 7000 8000 9000 10000 FEET

CONTOUR INTERVAL 40 FEET
NORTH AMERICAN VERTICAL DATUM OF 1988
This map was produced to conform with the National Geospatial Program US Topo Product Standard, 2011.
A metadata file associated with this product is draft version 0.6.14

COLORADO

Carbonate	Broken Rib Creek	Dotsero
Glenwood Springs	Shoshone	Cottonwood Pass
Cattle Creek	Carbondale	Leon

ADJOINING 7.5 QUADRANGLES

ROAD CLASSIFICATION
Expressway
Secondary Hwy
Ramp
Interstate Route
FS Primary Route
Local Connector
Local Road
4WD
US Route
FS Passenger Route
State Route
FS High Clearance Route

Check with local Forest Service unit for current travel conditions and restrictions.

SHOSHONE, CO
2013