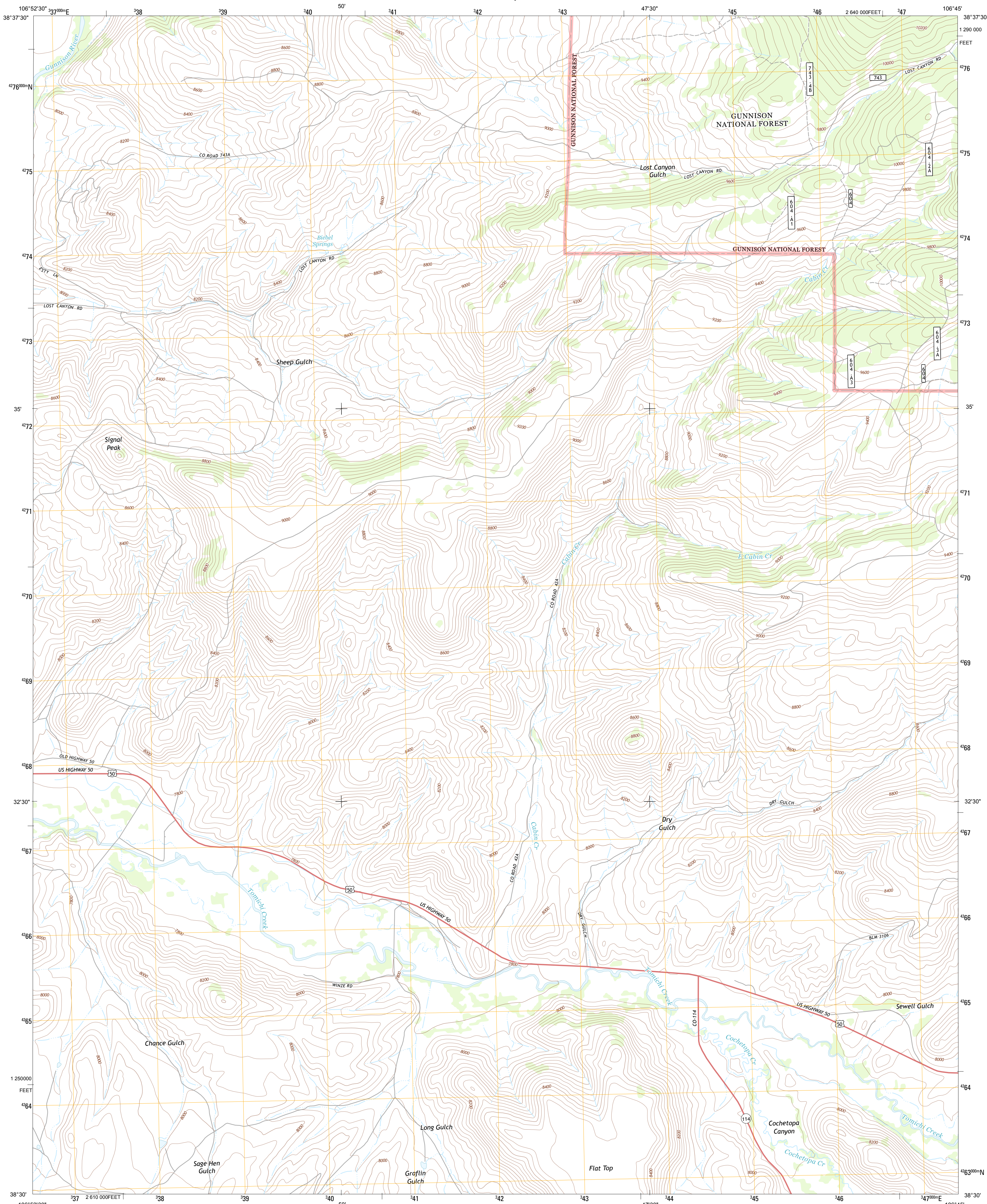




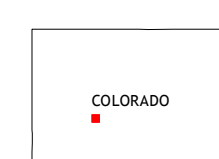
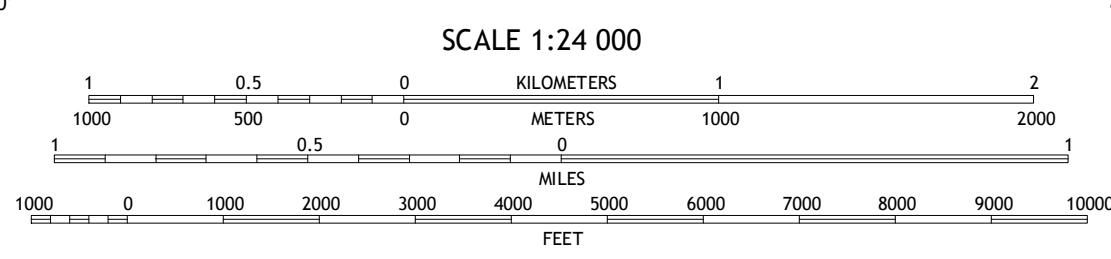
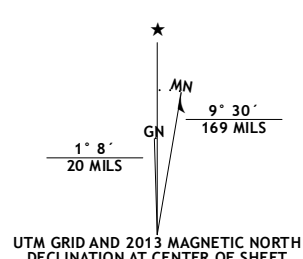
U.S. DEPARTMENT OF THE INTERIOR  
U. S. GEOLOGICAL SURVEY



SIGNAL PEAK QUADRANGLE  
COLORADO-GUNNISON CO.  
7.5-MINUTE SERIES



Produced by the United States Geological Survey  
North American Datum of 1983 (NAD83)  
World Geodetic System of 1984 (WGS84). Projection and  
1000-meter grid: Universal Transverse Mercator, Zone 13S  
10 000-foot ticks: Colorado Coordinate System of 1983 (central  
zone)



QUADRANGLE LOCATION		
Flat Top	Almont	Crystal Creek
Gunnison	Signal Peak	Parlin
Iris NW	Iris	Houston Gulch

- ROAD CLASSIFICATION**
- Expressway
  - Secondary Hwy
  - Ramp
  - Interstate Route
  - FS Primary Route
  - Local Connector
  - Local Road
  - 4WD
  - US Route
  - FS Passenger Route
  - State Route
  - FS High Clearance Route

Check with local Forest Service unit for current travel conditions and restrictions.

SIGNAL PEAK, CO  
2013

Imagery.....NAIP, August 2011  
Roads.....2006-2012 TomTom  
Roads within US Forest Service Lands.....FS Topo Data  
with limited Forest Service updates, 2013  
Names.....GNIS, 2013  
Hydrography.....National Hydrography Dataset, 2011  
Contours.....National Elevation Dataset, 2003  
Boundaries.....Census, IBWC, IBC, USGS, 1972 - 2012  
Public Land Survey System.....BLM, 2011

U.S. National Grid	
100,000-m Square ID	CC
Grid Zone Designation	13S

CONTOUR INTERVAL 40 FEET  
NORTH AMERICAN VERTICAL DATUM OF 1988  
This map was produced to conform with the  
National Geospatial Program US Topo Product Standard, 2011.  
A metadata file associated with this product is draft version 0.6.14

ADJOINING 7.5 QUADRANGLES