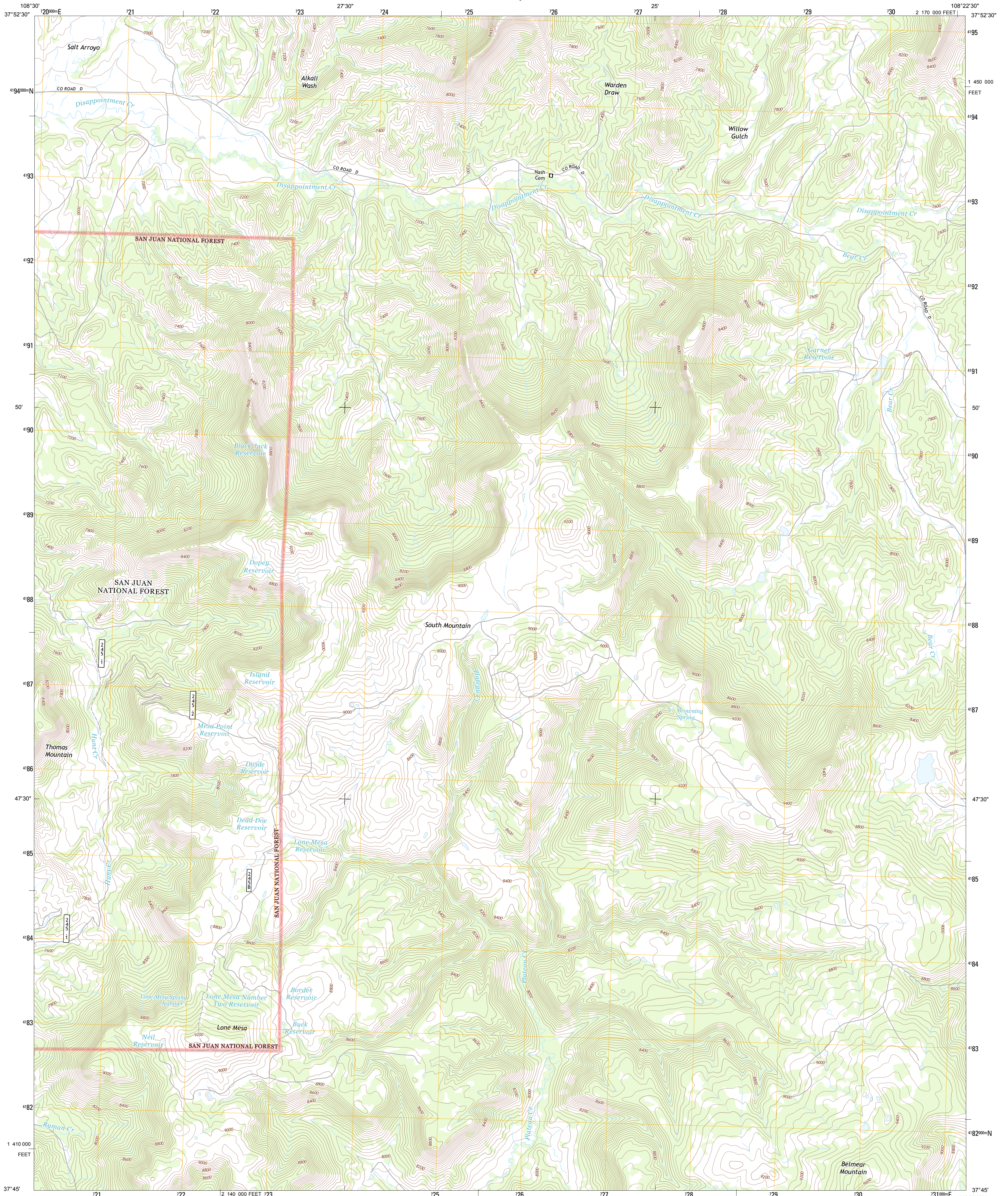




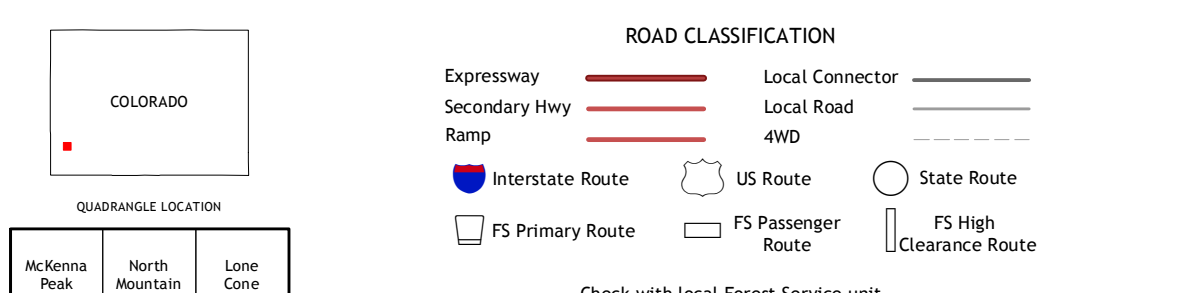
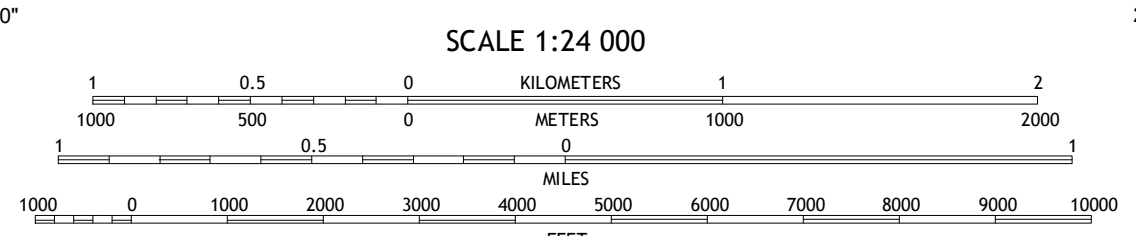
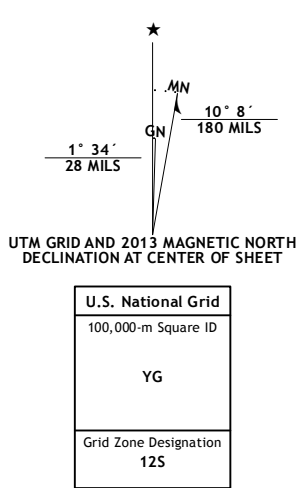
U.S. DEPARTMENT OF THE INTERIOR
U. S. GEOLOGICAL SURVEY



SOUTH MOUNTAIN QUADRANGLE
COLORADO-DOLores CO.
7.5-MINUTE SERIES



Produced by the United States Geological Survey
North American Datum of 1983 (NAD83)
World Geodetic System of 1984 (WGS84) Projection and
1 000-meter grid: Universal Transverse Mercator, Zone 12S
10 000-foot ticks: Colorado Coordinate System of 1983 (south zone)



Imagery.....NAIP, July 2011
Roads.....FS Topo Data
Roads within US Forest Service Lands.....FS Topo Data
with limited Forest Service updates, 2013
Names.....GNIS, 2013
Hydrography.....National Hydrography Dataset, 2011
Contours.....National Elevation Dataset, 2005
Boundaries.....Census, IBWC, IBC, USGS, 1972 - 2012
Public Land Survey System.....BLM, 2011

CONTOUR INTERVAL 40 FEET
NORTH AMERICAN VERTICAL DATUM OF 1988
This map was produced to conform with the
National Geospatial Program US Topo Product Standard, 2011.
A metadata file associated with this product is draft version 0.6.14

QUADRANGLE LOCATION		
McKenna Peak	North Mountain	Lone Cone
Glade Mountain	South Mountain	Groundhog Reservoir
Narragansett Mountain	Willow Spring	Nipple Mountain

SOUTH MOUNTAIN, CO
2013

ADJOINING 7.5 QUADRANGLES