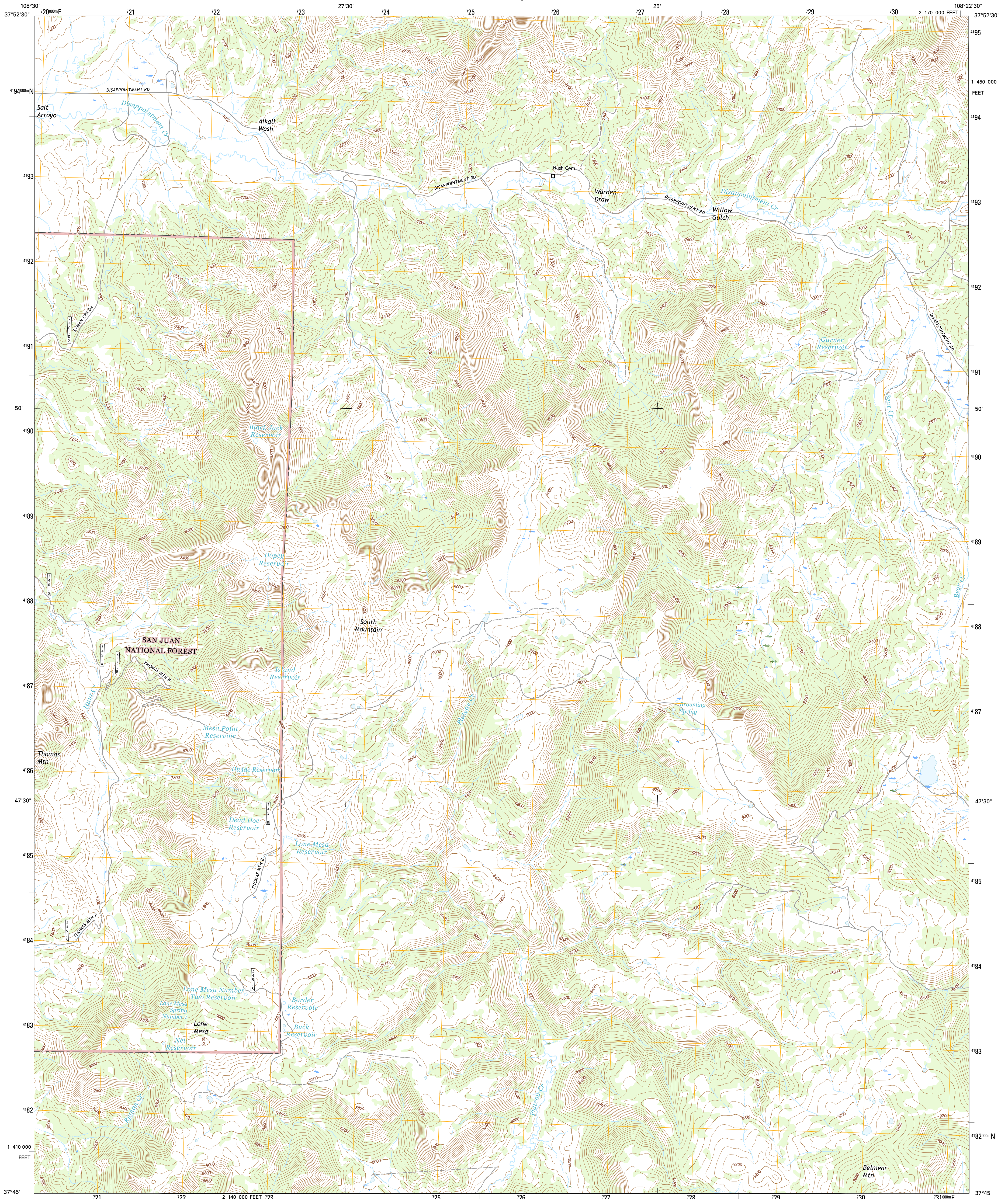




U.S. DEPARTMENT OF THE INTERIOR
U.S. GEOLOGICAL SURVEY



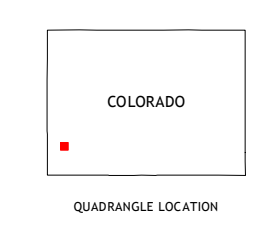
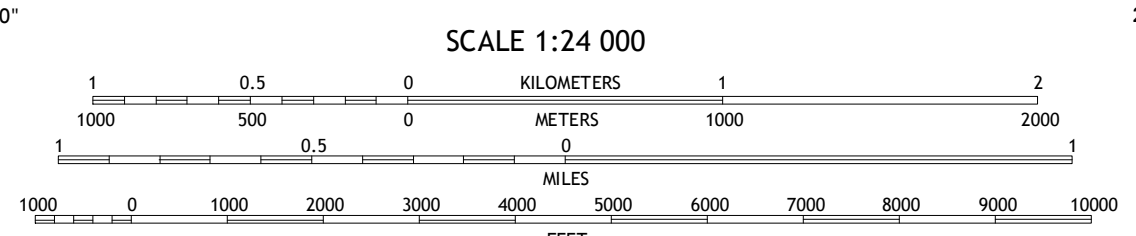
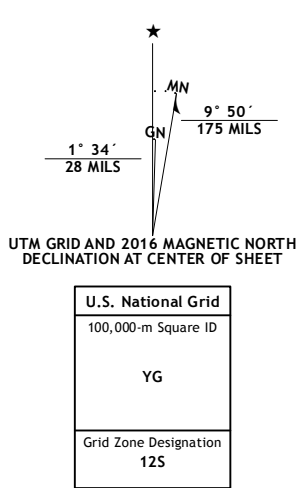
SOUTH MOUNTAIN QUADRANGLE
COLORADO-DOLORES CO.
7.5-MINUTE SERIES



Produced by the United States Geological Survey
North American Datum of 1983 (NAD83)
World Geodetic System of 1984 (WGS84) Projection and
1 000-meter grid: Universal Transverse Mercator, Zone 12S
10 000-foot ticks: Colorado Coordinate System of 1983 (south zone)

This map is not a legal document. Boundaries may be generalized for this map scale. Private lands within government reservations may not be shown. Obtain permission before entering private lands.

Imagery:NAIP, September 2013
Roads:U.S. Census Bureau, 2015 - 2016
Roads within US Forest Service Lands:FSTopo Data with limited Forest Service updates, 2012 - 2016
Names:National Hydrography Dataset, 2016
Hydrography:GNIS, 2016
Contours:National Elevation Dataset, 2005
Boundaries:Multiple sources; see metadata file 1972 - 2016
Public Land Survey System:BLM, 2011
Wetlands:FWS National Wetlands Inventory 1977 - 2014



ROAD CLASSIFICATION

Expressway	Local Connector
Secondary Hwy	Local Road
Ramp	4WD
Interstate Route	US Route
FS Primary Route	FS Passenger Route
	FS High Clearance Route

Check with local Forest Service unit for current travel conditions and restrictions.

ADJOINING QUADRANGLES

1	2	3
4	5	6
7	8	

1 McKenna Peak
2 North Mountain
3 Lone Cone
4 Glade Mountain
5 Groundhog Reservoir
6 Narraguinnep Mountain
7 Willow Spring
8 Nipple Mountain

SOUTH MOUNTAIN, CO
2016

