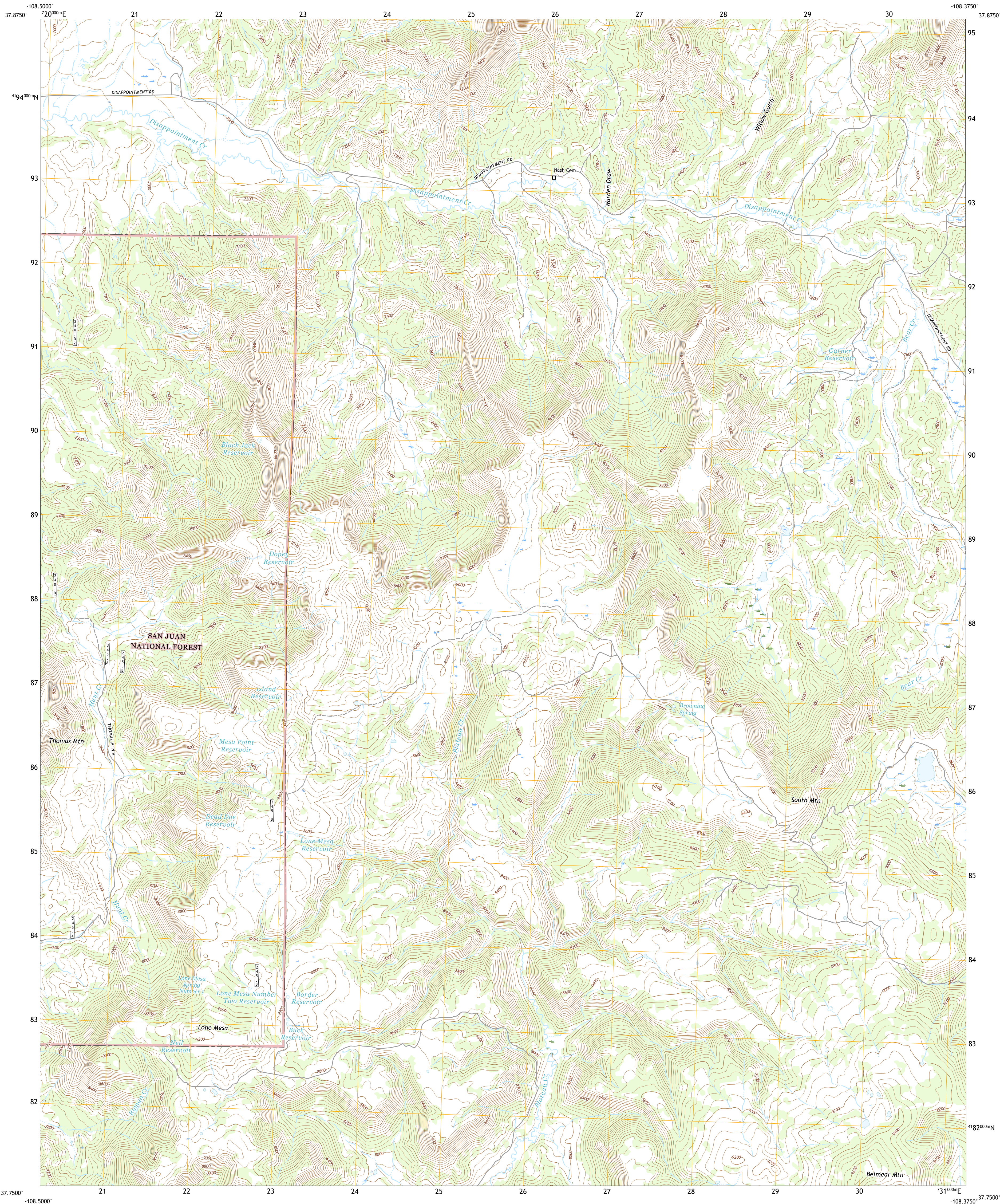




U.S. DEPARTMENT OF THE INTERIOR
U.S. GEOLOGICAL SURVEY

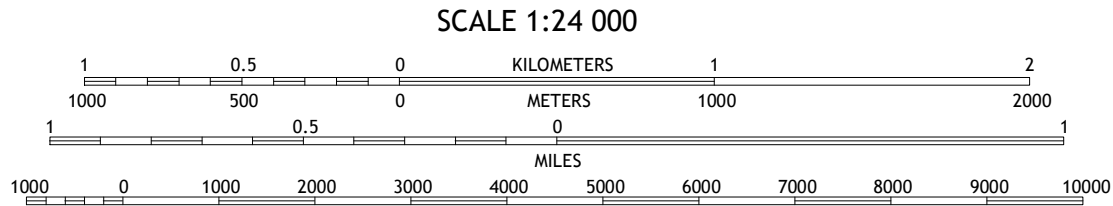
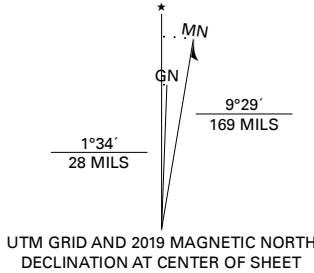


SOUTH MOUNTAIN QUADRANGLE
COLORADO - DOLORES COUNTY
7.5-MINUTE SERIES

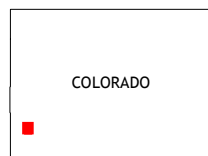


Produced by the United States Geological Survey
North American Datum of 1983 (NAD83)
World Geodetic System of 1984 (WGS84). Projection and
1 000-meter grid: Universal Transverse Mercator, Zone 12S
This map is not a legal document. Boundaries may be
generalized for this map scale. Private lands within government
reservations may not be shown. Obtain permission before
entering private lands.

Imagery.....NAIP, September 2017 - January 2018
Roads.....U.S. Census Bureau, 2016
Roads within US Forest Service Lands.....FSTopo Data
with limited Forest Service updates, 2013
Names.....GNS, 1979 - 2019
Hydrography.....National Hydrography Dataset, 1899 - 2019
Contours.....National Elevation Dataset, 2005
Boundaries.....Multiple sources; see metadata file 2017 - 2018
Public Land Survey System.....BLM, 2018
Wetlands.....FWS National Wetlands Inventory, 1983



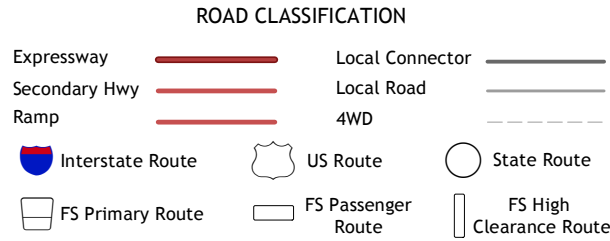
CONTOUR INTERVAL 40 FEET
NORTH AMERICAN VERTICAL DATUM OF 1988
This map was produced to conform with the
National Geospatial Program US Topo Product Standard, 2011.
A metadata file associated with this product is draft version 0.6.18



1	2	3
4	5	6
7	8	9

ADJOINING QUADRANGLES

1 McKenna Peak
2 North Mountain
3 Lone Cone
4 Glade Mountain
5 Groundhog Reservoir
6 Narraajineg Mountain
7 Willow Spring
8 Nipple Mountain



SOUTH MOUNTAIN, CO
2019

