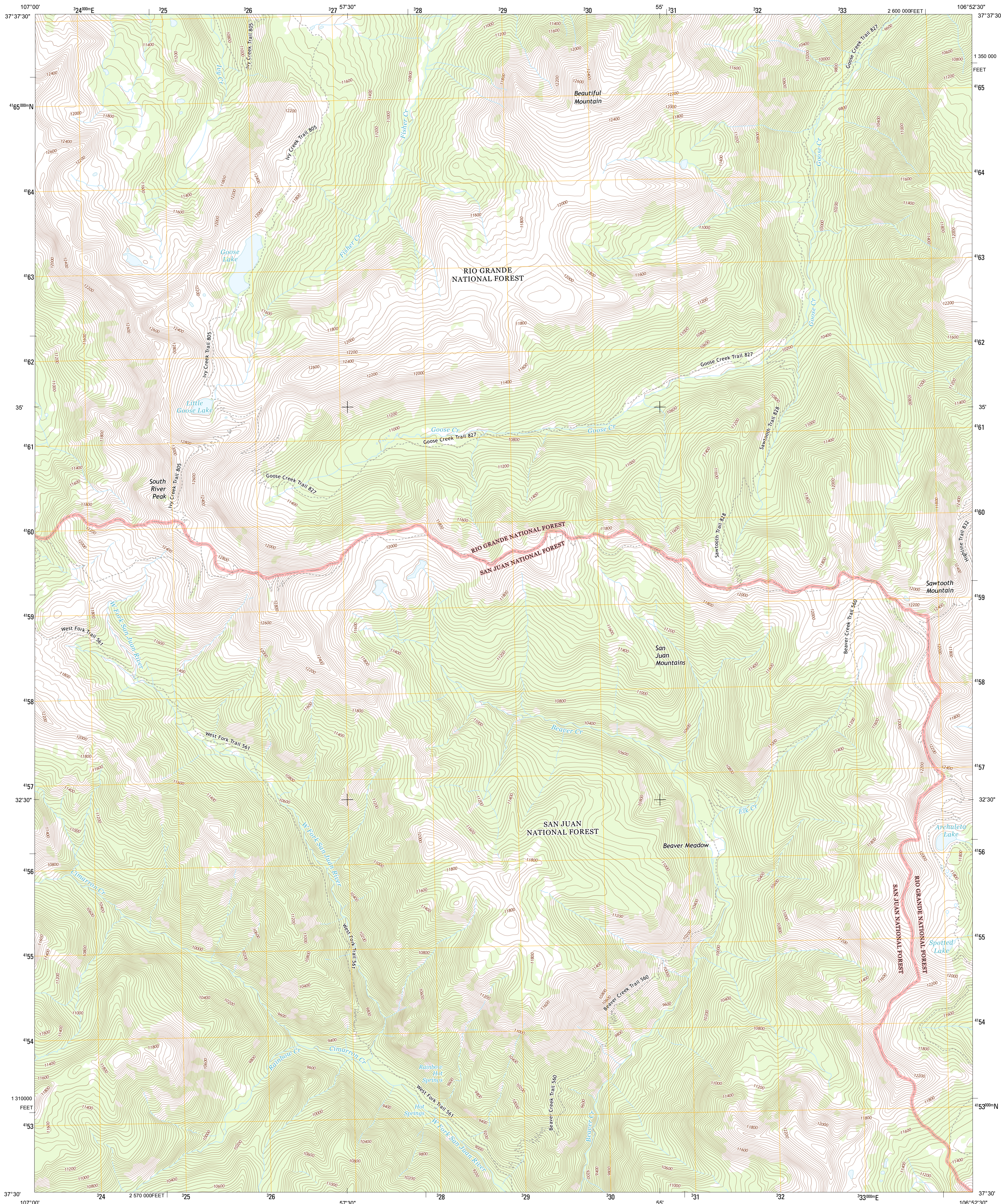




U.S. DEPARTMENT OF THE INTERIOR  
U. S. GEOLOGICAL SURVEY

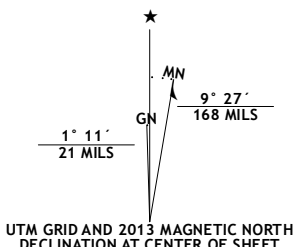


SOUTH RIVER PEAK QUADRANGLE  
COLORADO-MINERAL CO.  
7.5-MINUTE SERIES

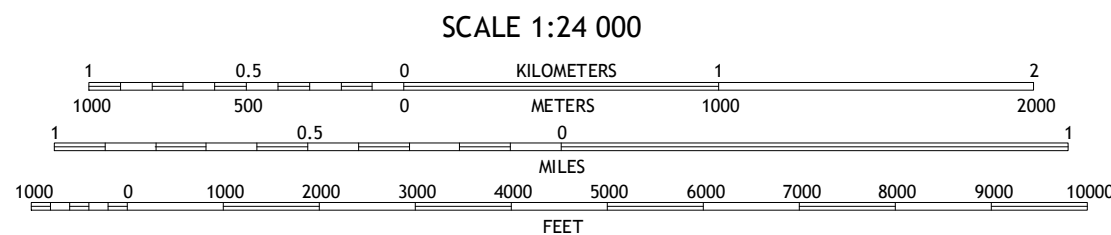


Produced by the United States Geological Survey  
North American Datum of 1983 (NAD83)  
World Geodetic System of 1984 (WGS84). Projection and  
1 000-meter grid: Universal Transverse Mercator, Zone 13S  
10 000-foot ticks: Colorado Coordinate System of 1983 (south  
zone)

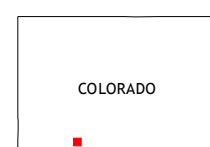
Imagery.....NAIP, August 2011  
Roads.....US Forest Service Lands.....FS Topo Data  
with limited Forest Service updates, 2013  
Names.....GNIS, 2013  
Hydrography.....National Hydrography Dataset, 2011  
Contours.....National Elevation Dataset, 2005  
Boundaries.....Census, IBWC, IBC, USGS, 1972 - 2012  
Public Land Survey System.....BLM, 2011



U.S. National Grid
100,000 m Square ID
CB
Grid Zone Designation
13S



CONTOUR INTERVAL 40 FEET  
NORTH AMERICAN VERTICAL DATUM OF 1988  
This map was produced to conform with the  
National Geospatial Program US Topo Product Standard, 2011.  
A metadata file associated with this product is draft version 0.6.14



Workman Creek	Spar City	Lake Humphreys
Palomino Mountain	South River Peak	Mount Hope
Pagosa Peak	Saddle Mountain	Wolf Creek Pass

ADJOINING 7.5' QUADRANGLES

ROAD CLASSIFICATION			
Expressway	Local Connector	US Route	State Route
Secondary Hwy	Local Road	4WD	FS High
Ramp	Interstate Route	FS Passenger Route	Clearance Route

Check with local Forest Service unit  
for current travel conditions and restrictions.

SOUTH RIVER PEAK, CO  
2013