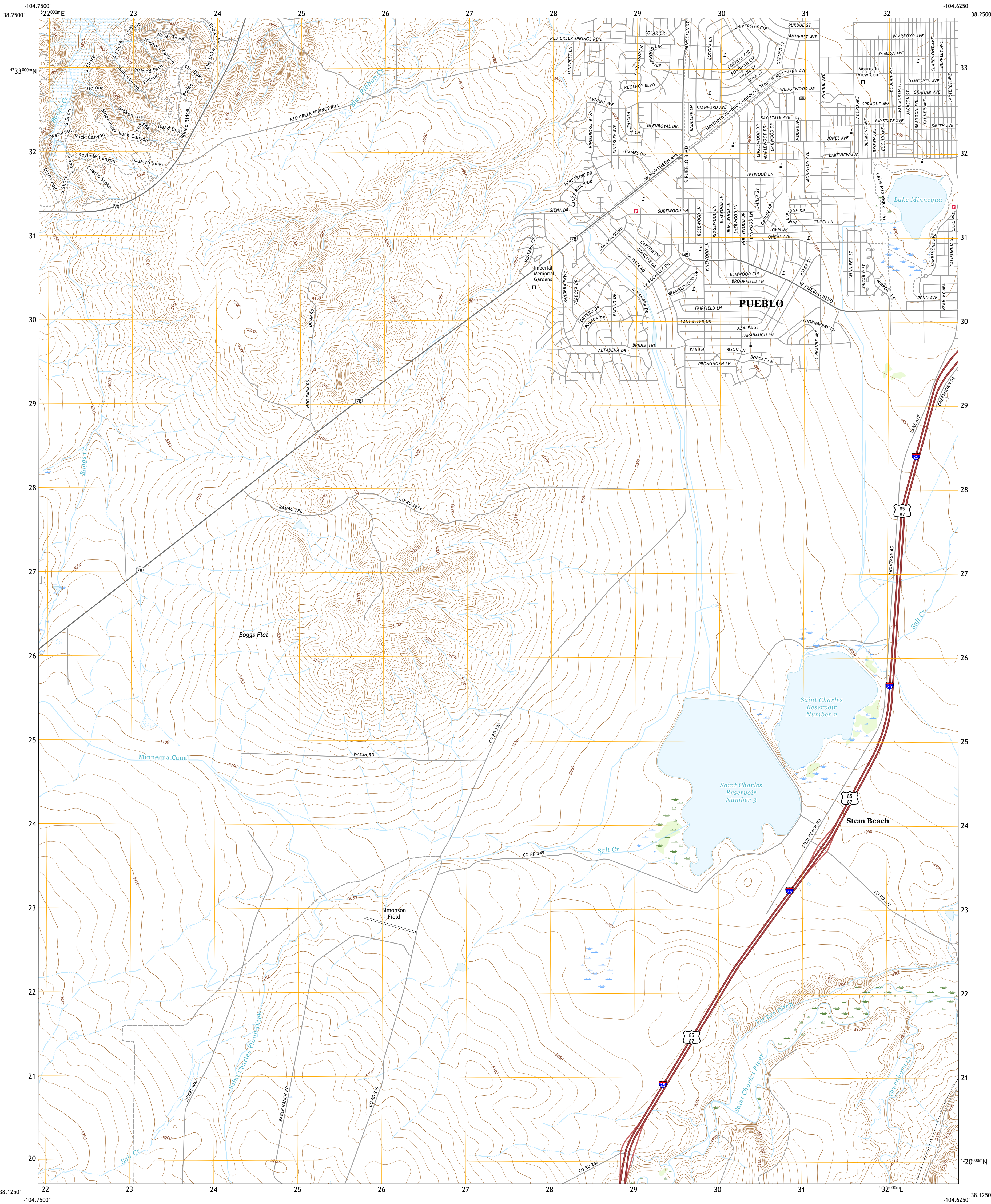




U.S. DEPARTMENT OF THE INTERIOR  
U.S. GEOLOGICAL SURVEY



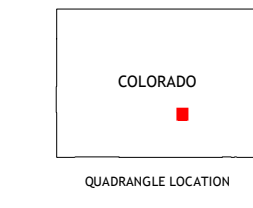
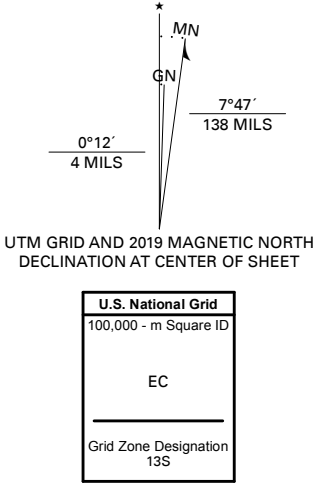
SOUTHWEST PUEBLO QUADRANGLE  
COLORADO - PUEBLO COUNTY  
7.5-MINUTE SERIES



Produced by the United States Geological Survey

North American Datum of 1983 (NAD83)  
World Geodetic System of 1984 (WGS84) - Projection and  
1 000-meter grid/Universal Transverse Mercator, Zone 13S  
This map is not a legal document. Boundaries may be  
generalized for this map scale. Private lands within government  
reservations may not be shown. Obtain permission before  
entering private lands.

Imagery.....NAIP, September 2017 - January 2018  
Roads.....U.S. Census Bureau.....2016  
Names.....GNIS, 1978 - 2018  
Hydrography.....National Hydrography Dataset, 2004 - 2018  
Contours.....National Elevation Dataset, 2004 - 2007  
Boundaries.....Multiple sources; see metadata file 2017  
Public Land Survey System.....BLM, 2018  
Wetlands.....FWS National Wetlands Inventory 1974 - 1975



1	2	3
4	5	6
7	8	9

- 1 Swallows  
2 Northwest Pueblo  
3 Northeast Pueblo  
4 Beulah NE  
5 Southeast Pueblo  
6 Muldoon Hill  
7 Verde School  
8 Goat Butte

ROAD CLASSIFICATION	
Expressway	Local Connector
Secondary Hwy	Local Road
Ramp	4WD
Interstate Route	US Route
	State Route

SOUTHWEST PUEBLO, CO  
1919

