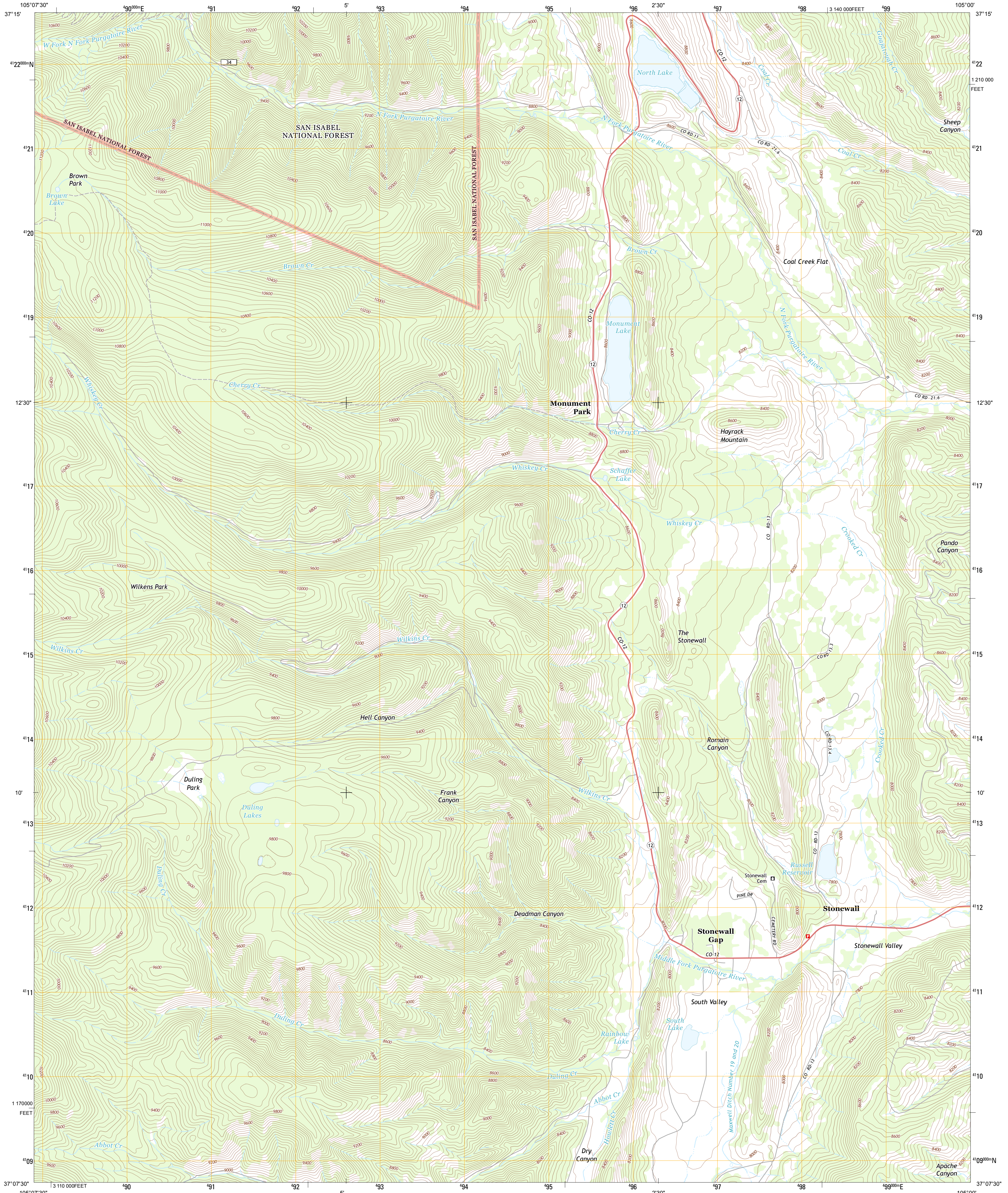




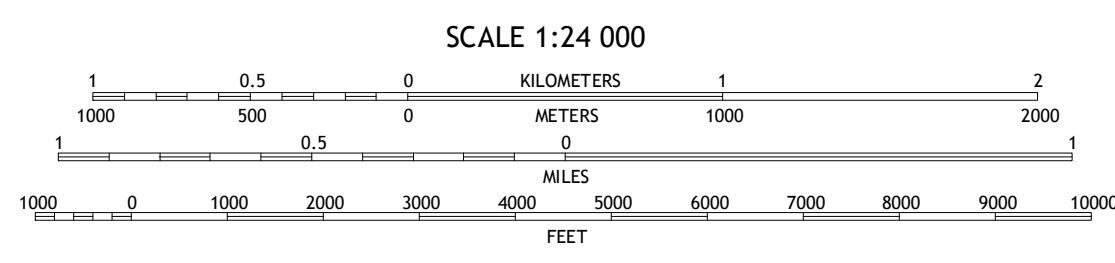
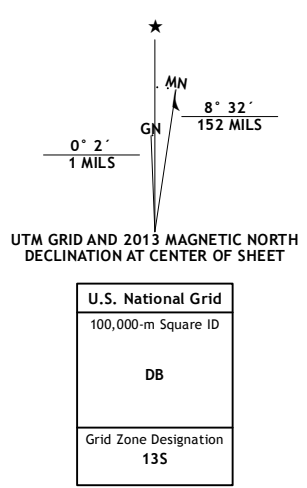
U.S. DEPARTMENT OF THE INTERIOR
U. S. GEOLOGICAL SURVEY



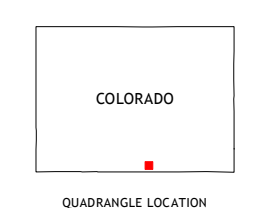
STONEWALL QUADRANGLE
COLORADO-LAS ANIMAS CO.
7.5-MINUTE SERIES



Produced by the United States Geological Survey
North American Datum of 1983 (NAD83)
World Geodetic System of 1984 (WGS84). Projection and
10 000-foot ticks: Colorado Coordinate System of 1983 (south
zone)



CONTOUR INTERVAL 40 FEET
NORTH AMERICAN VERTICAL DATUM OF 1988
This map was produced to conform with the
National Geospatial Program US Topo Product Standard, 2011.
A metadata file associated with this product is draft version 0.6.14



- ROAD CLASSIFICATION**
- Expressway
 - Secondary Hwy
 - Ramp
 - Interstate Route
 - FS Primary Route
 - Local Connector
 - Local Road
 - 4WD
 - US Route
 - FS Passenger Route
 - State Route
 - FS High Clearance Route
- Check with local Forest Service unit for current travel conditions and restrictions.

QUADRANGLE LOCATION

Trinchera Peak	Cucharas Pass	Herrick Canyon
El Valle Creek	Stonewall	Vigil
Culebra Peak	Torres	Terco

STONEWALL, CO
2013

ADJOINING 7.5' QUADRANGLES

Imagery.....NAIP, August 2011 - September 2011
 Roads.....©2006-2012 TomTom
 Roads within US Forest Service Lands.....FS Topo Data
 with limited Forest Service updates, 2013
 Names.....GNIS, 2013
 Hydrography.....National Hydrography Dataset, 2011
 Contours.....National Elevation Dataset, 2006
 Boundaries.....Census, IBWC, IBC, USGS, 1972 - 2012
 Public Land Survey System.....BLM, 2011

U.S. National Grid
 100,000-m Square ID
 DB
 Grid Zone Designation
 13S