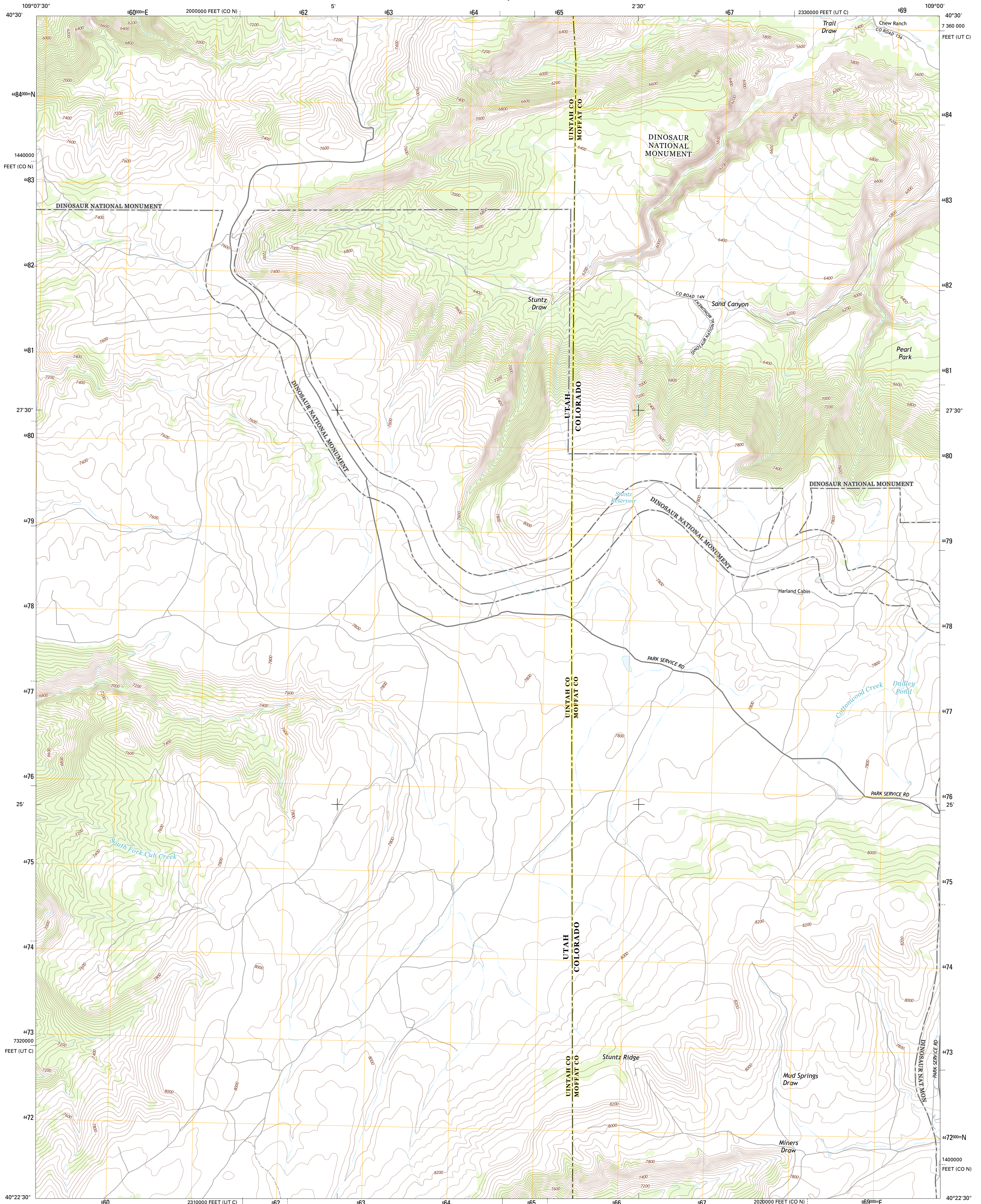




U.S. DEPARTMENT OF THE INTERIOR
U. S. GEOLOGICAL SURVEY

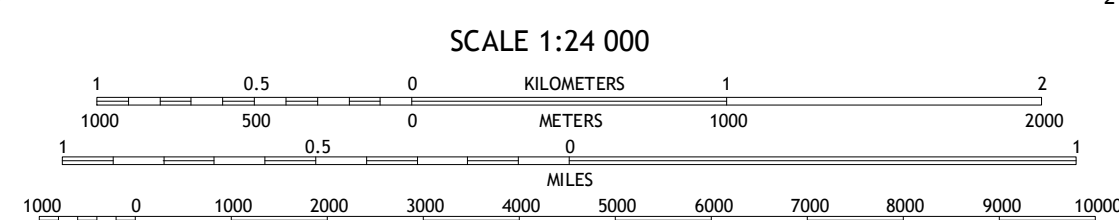
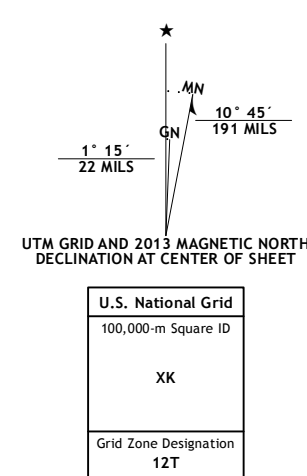


STUNTZ RESERVOIR QUADRANGLE
COLORADO-UTAH
7.5-MINUTE SERIES

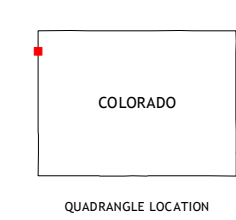


Produced by the United States Geological Survey
North American Datum of 1983 (NAD83)
World Geodetic System of 1984 (WGS84), Projection and
1 000-meter grid: Universal Transverse Mercator, Zone 12T
10 000-foot ticks: Utah Coordinate System of 1983 (central
zone), Colorado Coordinate System of 1983 (north zone)

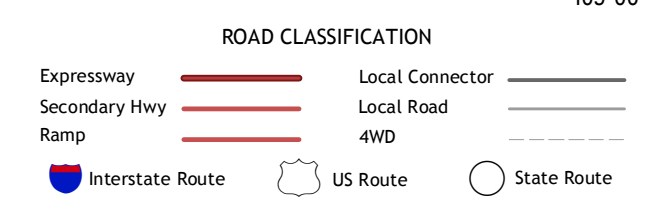
Imagery.....NAIP, June 2011 - July 2011
Roads.....©2006-2012 TomTom
Names.....GNIS, 2013
Hydrography.....National Hydrography Dataset, 2009
Contours.....National Elevation Dataset, 2003
Boundaries, BLM, BGC, USGS, 1972 - 2012
Public Land Survey System.....BLM, 2011



CONTOUR INTERVAL 40 FEET
NORTH AMERICAN VERTICAL DATUM OF 1988
This map was produced to conform with the
National Geospatial Program US Topo Product Standard, 2011.
A metadata file associated with this product is draft version 0.6.14



Island Park	Jones Hole	Canyon of Lodere South
Split Mountain	Stuntz Reservoir	Hells Canyon
Cliff Ridge	Snake John Reef	Plug Hat Rock



STUNTZ RESERVOIR, CO-UT
2013

ADJOINING 7.5' QUADRANGLES