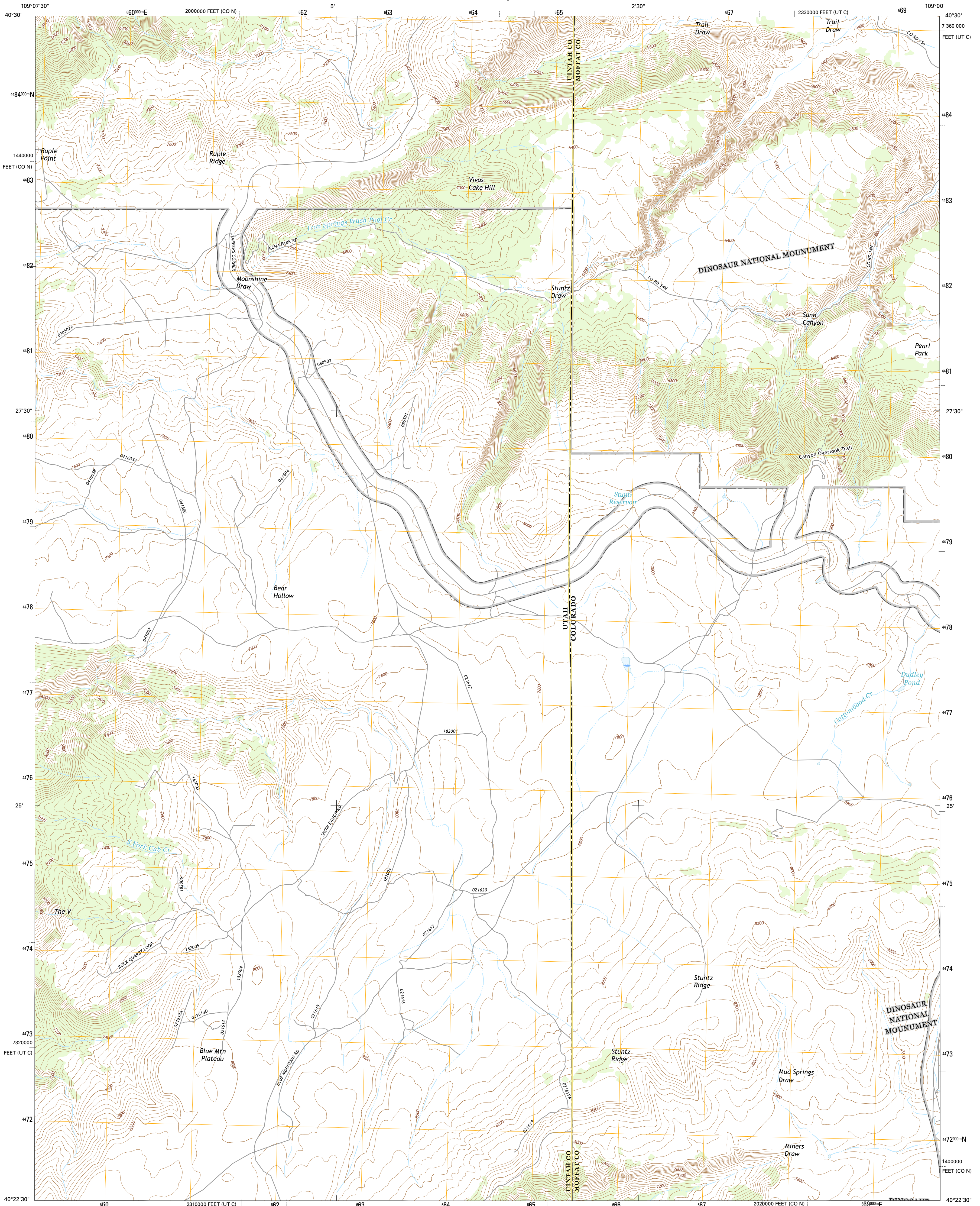




U.S. DEPARTMENT OF THE INTERIOR  
U.S. GEOLOGICAL SURVEY



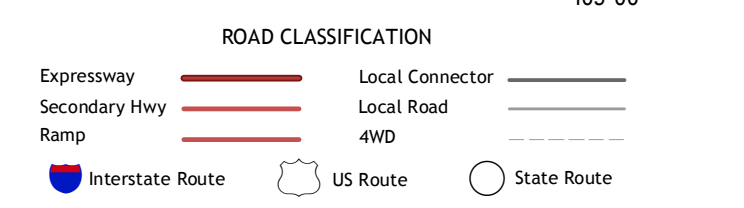
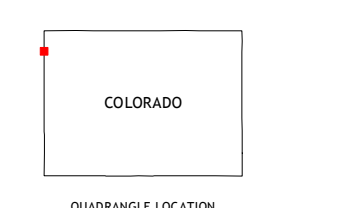
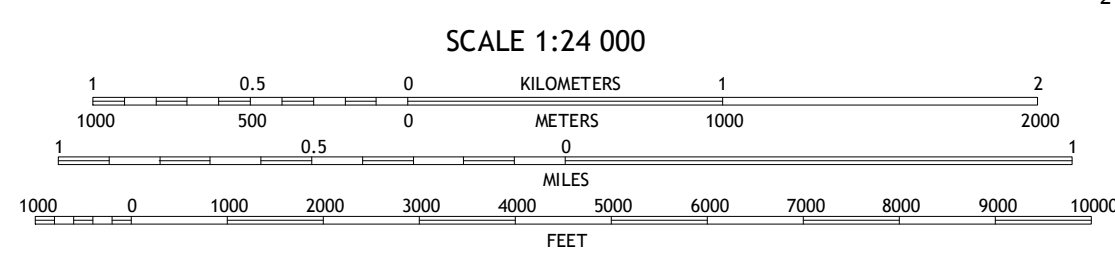
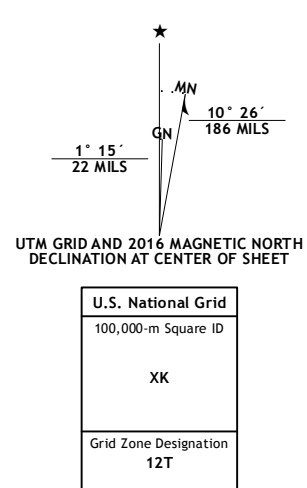
STUNTZ RESERVOIR QUADRANGLE  
COLORADO-UTAH  
7.5-MINUTE SERIES



**Produced by the United States Geological Survey**  
 North American Datum of 1983 (NAD83)  
 World Geodetic System of 1984 (WGS84), Projection and  
 1 000-meter grid: Universal Transverse Mercator, Zone 12T  
 10 000-foot ticks: Utah Coordinate System of 1983 (central  
 zone), Colorado Coordinate System of 1983 (north zone)

This map is not a legal document. Boundaries may be  
 generalized for this map scale. Private lands within government  
 reservations may not be shown. Obtain permission before  
 entering private lands.

Imagery.....N.A.P., July - 2013  
 Roads.....U.S. Census Bureau, 2015 - 2016  
 Names.....GNIS, 2016  
 Hydrography.....National Hydrography Dataset, 2013  
 Contours.....National Elevation Dataset, 2003  
 Boundaries.....Multiple sources; see metadata file 1972 - 2016  
 Public Land Survey System.....BLM, 2011  
 Wetlands.....FWS National Wetlands Inventory 1977 - 2014



1	2	3
4	5	6
7	8	9

ADJOINING QUADRANGLES

1 Island Park  
 2 Jones Hole  
 3 Canyon of Lodore South  
 4 Split Mountain  
 5 Hell's Canyon  
 6 Cliff Ridge  
 7 Snake John Reef  
 8 Plug Hat Rock

**STUNTZ RESERVOIR, CO-UT**  
2016

