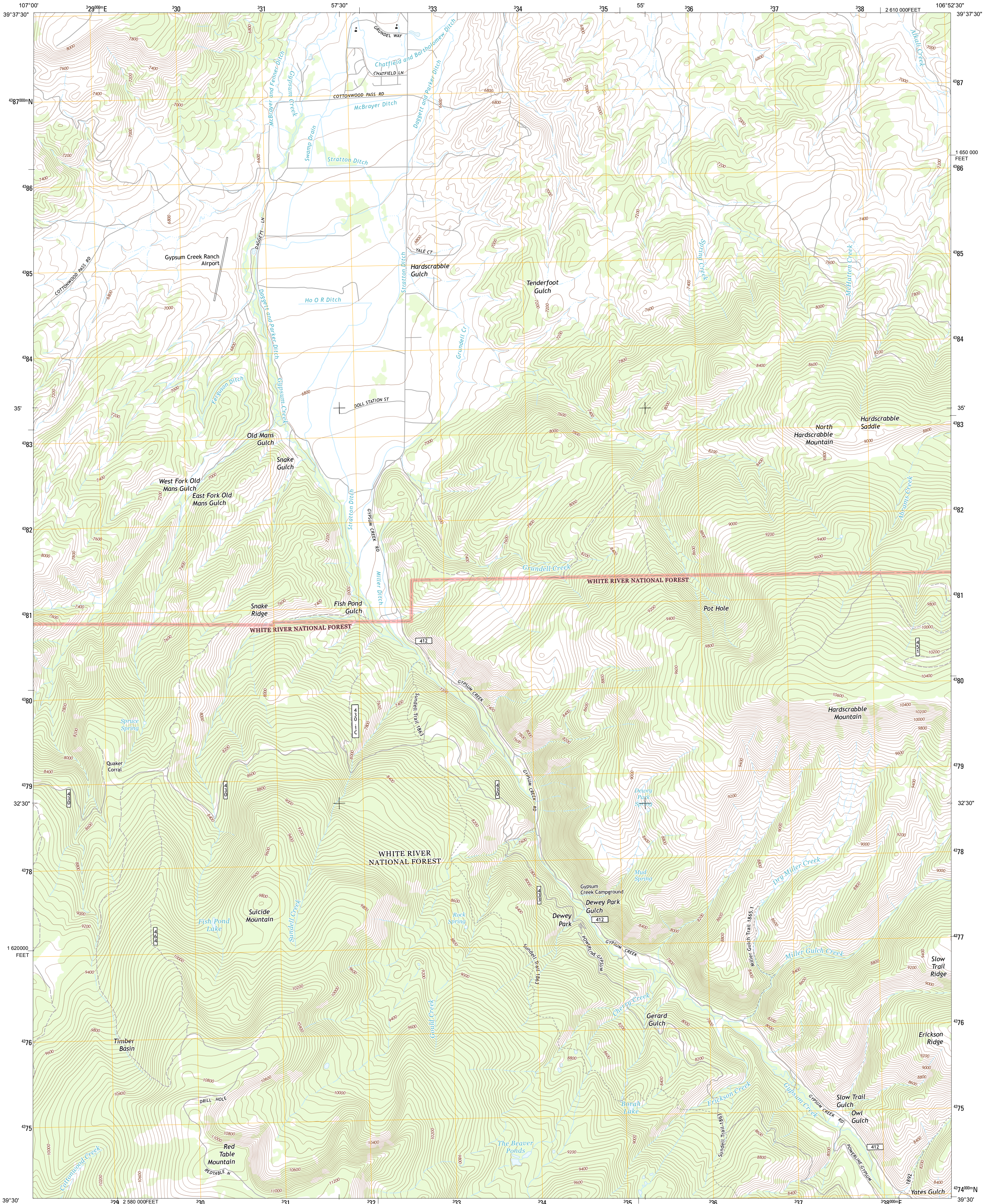




U.S. DEPARTMENT OF THE INTERIOR
U. S. GEOLOGICAL SURVEY



SUICIDE MOUNTAIN QUADRANGLE
COLORADO-EAGLE CO.
7.5-MINUTE SERIES



Produced by the United States Geological Survey
North American Datum of 1983 (NAD83). Projection and
World Geodetic System of 1984 (WGS84). 100-meter grid. Universal Transverse Mercator, Zone 13S
10 000-foot ticks. Colorado Coordinate System of 1983 (central
zone)

Imagery.....NAIP, August 2011
Roads.....©2006-2012, TomTom
Roads within US Forest Service Lands.....FSTopo Data
with limited Forest Service updates, 2013
Names.....GNIS, 2013
Hydrography.....National Hydrography Dataset, 2011
Contours.....National Elevation Dataset, 2004
Boundaries.....Census, IBC, IBC, USGS, 1972 - 2012
Public Land Survey System.....BLM, 2011

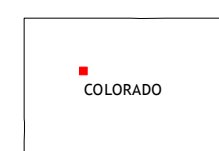
UTM GRID AND 2013 MAGNETIC NORTH
DECLINATION AT CENTER OF SHEET

U.S. National Grid
100,000-m Square ID
CD
Grid Zone Designation
13S

SCALE 1:24 000
1 0.5 0 1 2
1000 500 0 1000 2000
KILOMETERS
1 0.5 0 1000 2000
METERS
1 0 1000 2000 3000 4000 5000 6000 7000 8000 9000 10000
MILES
FEET

CONTOUR INTERVAL 40 FEET
NORTH AMERICAN VERTICAL DATUM OF 1988

This map was produced to conform with the
National Geospatial Program US Topo Product Standard, 2011.
A metadata file associated with this product is draft version 0.6.14



QUADRANGLE LOCATION		
Dotsero	Gypsum	Eagle
Cottonwood Pass	Suicide Mountain	The Seven Hermits
Leon	Toner Reservoir	Red Creek

ROAD CLASSIFICATION
Expressway
Secondary Hwy
Ramp
Interstate Route
FS Primary Route
Local Connector
Local Road
4WD
US Route
US Route
FS Passenger Route
FS High Clearance Route
State Route

Check with local Forest Service unit
for current travel conditions and restrictions.

SUICIDE MOUNTAIN, CO
2013