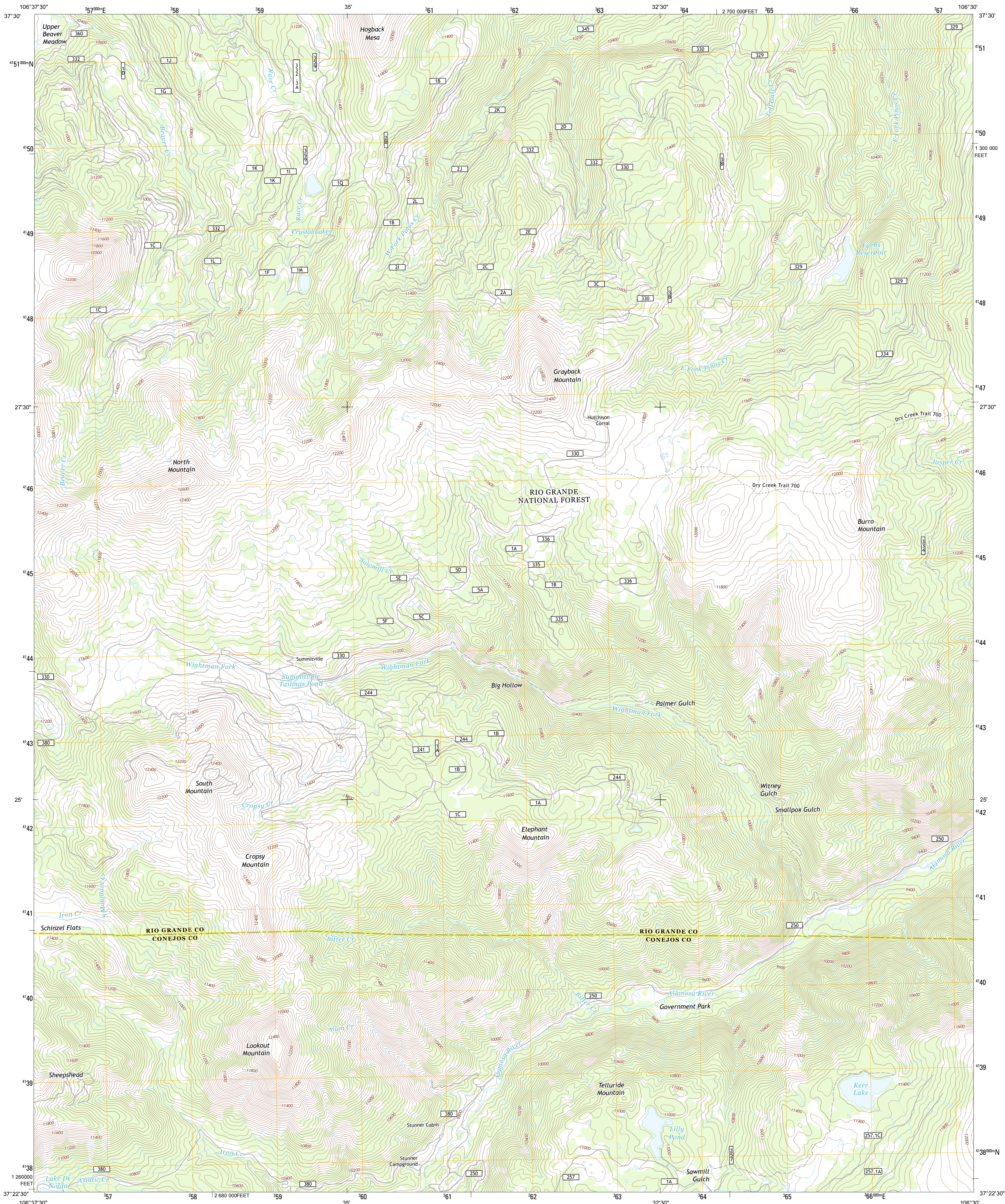




U.S. DEPARTMENT OF THE INTERIOR  
U. S. GEOLOGICAL SURVEY

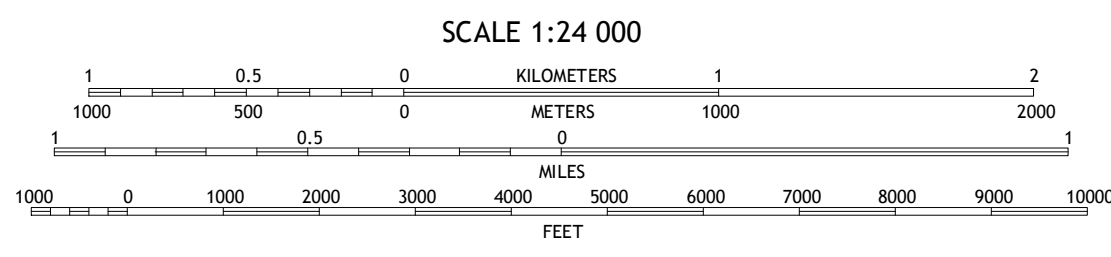
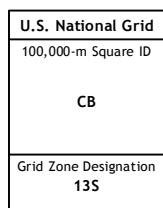
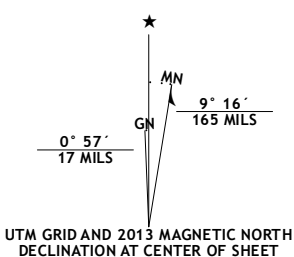


SUMMITVILLE QUADRANGLE  
COLORADO  
7.5-MINUTE SERIES

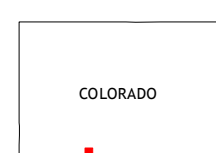


Produced by the United States Geological Survey  
North American Datum of 1983 (NAD83)  
World Geodetic System of 1984 (WGS84). Projection and  
1 000-meter grid: Universal Transverse Mercator, Zone 13S  
10 000-foot ticks: Colorado Coordinate System of 1983 (south  
zone)

Imagery.....NAIP, August 2011  
Roads.....US Forest Service Lands, 2006-2012  
Roads.....US Forest Service Lands, 2006-2012  
with limited Forest Service updates, 2013  
Names.....National Hydrography Dataset, 2011  
Hydrography.....National Hydrography Dataset, 2011  
Contours.....National Elevation Dataset, 2005  
Boundaries.....Census, IBWC, IBC, USGS, 1972 - 2012  
Public Land Survey System.....BLM, 2011

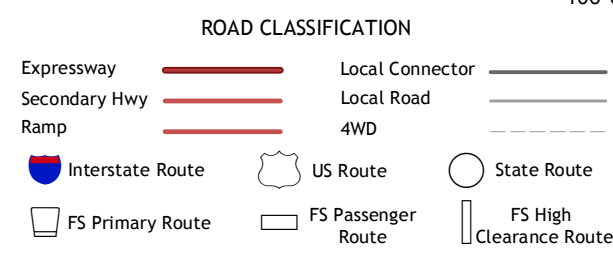


This map was produced to conform with the  
National Geospatial Program US Topo Product Standard, 2011.  
A metadata file associated with this product is draft version 0.6.14



Beaver Creek Reservoir	Del Norte Peak	Horseshoe Mountain
Elwood Pass	Summitville	Jasper
Summit Peak	Platoro	Red Mountain

ADJOINING 7.5 QUADRANGLES



Check with local Forest Service unit  
for current travel conditions and restrictions.

SUMMITVILLE, CO  
2013