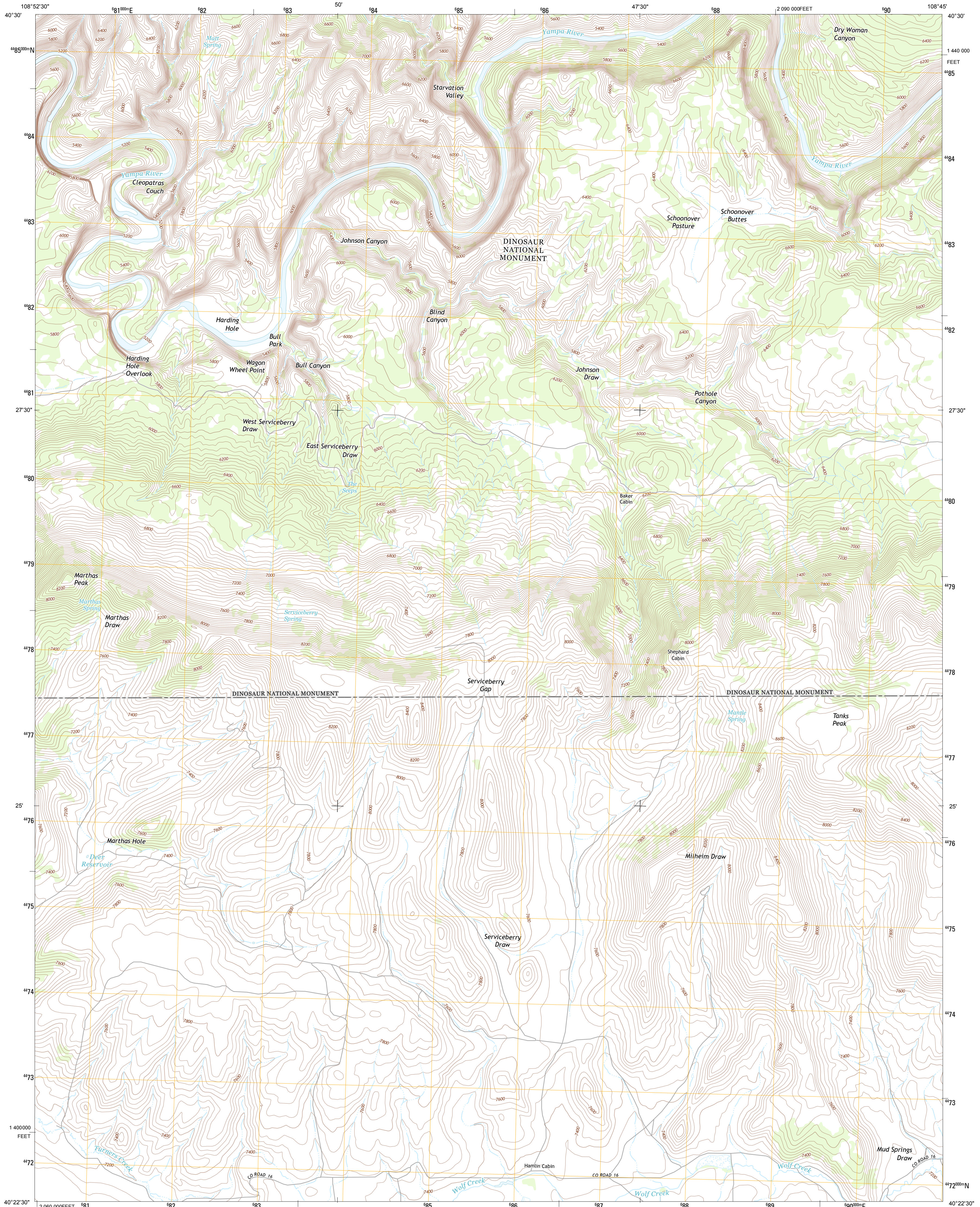




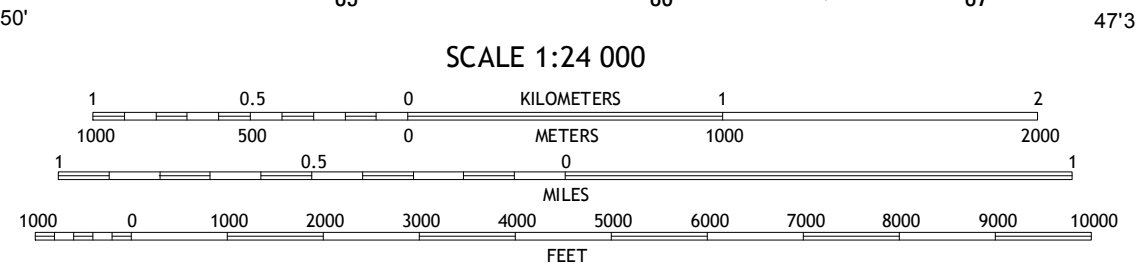
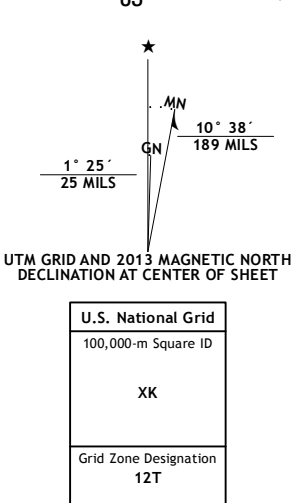
U.S. DEPARTMENT OF THE INTERIOR
U. S. GEOLOGICAL SURVEY



TANKS PEAK QUADRANGLE
COLORADO-MOFFAT CO.
7.5-MINUTE SERIES

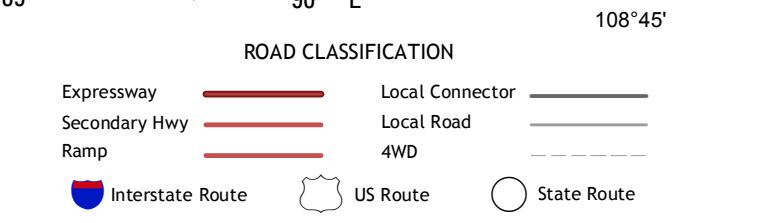
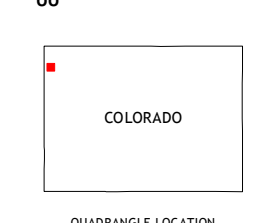


Produced by the United States Geological Survey
North American Datum of 1983 (NAD83)
World Geodetic System of 1984 (WGS84), Projection and
1 000-meter grid: Universal Transverse Mercator, Zone 12T
10 000-foot ticks: Colorado Coordinate System of 1983 (north zone)



CONTOUR INTERVAL 40 FEET
NORTH AMERICAN VERTICAL DATUM OF 1988

This map was produced to conform with the National Geospatial Program US Topo Product Standard, 2011. A metadata file associated with this product is draft version 0.6.14



Canyon of Lodone South	Zenobia Peak	Greystone
Hells Canyon	Tanks Peak	Haystack Rock
Plug Hat Rock	Lazy Y Point	Skull Creek

ADJOINING 7.5' QUADRANGLES

TANKS PEAK, CO
2013