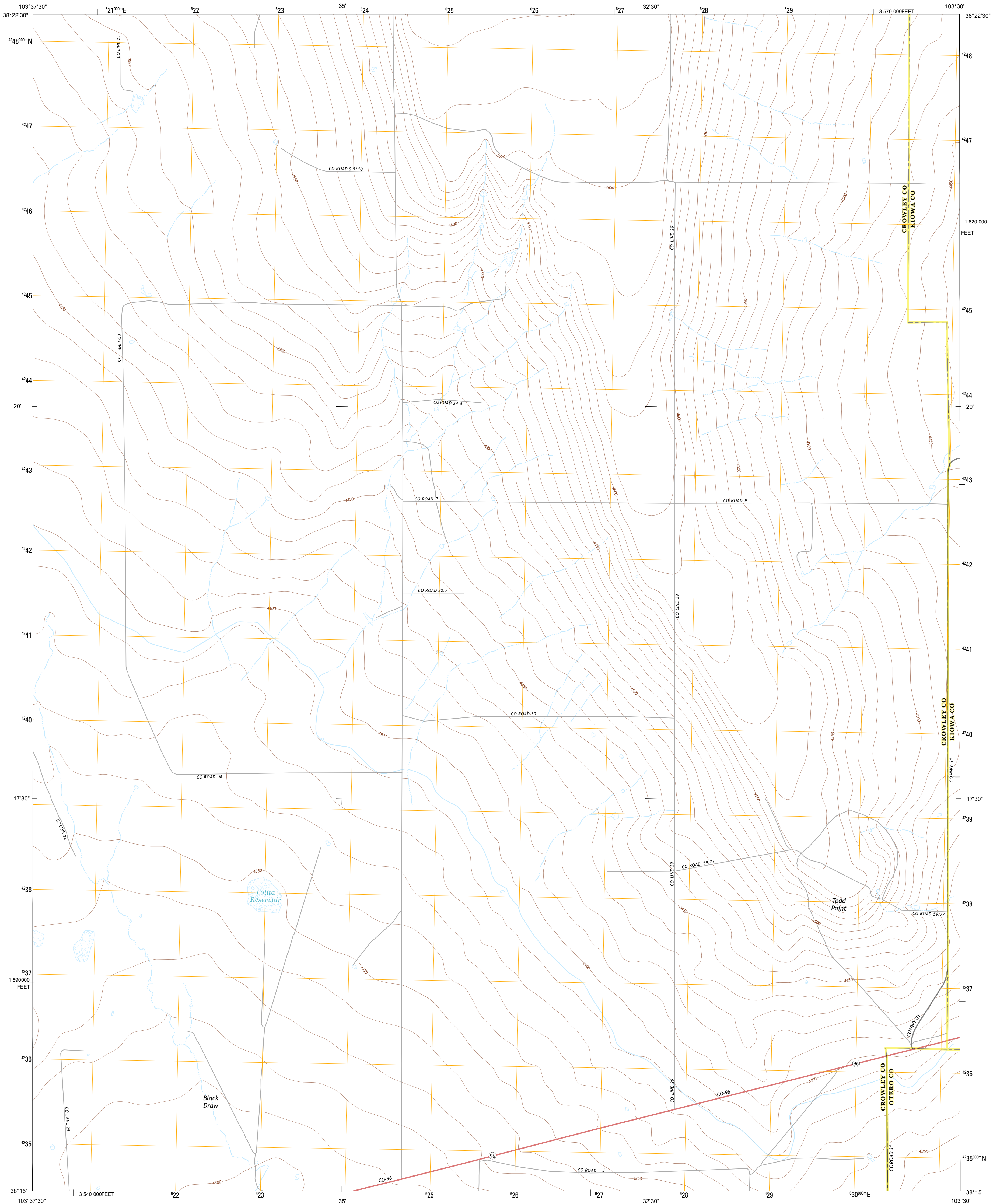




U.S. DEPARTMENT OF THE INTERIOR
U. S. GEOLOGICAL SURVEY

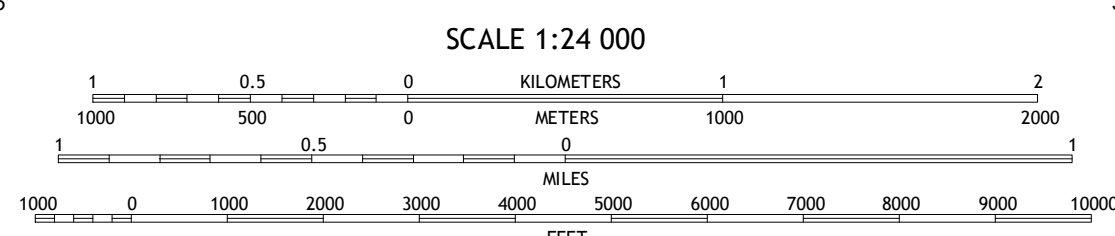
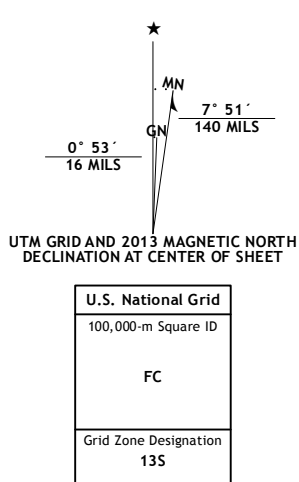


TODD POINT QUADRANGLE
COLORADO
7.5-MINUTE SERIES

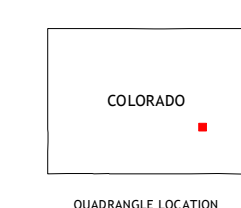


Produced by the United States Geological Survey
North American Datum of 1983 (NAD83)
World Geodetic System of 1984 (WGS84). Projection and
1 000-meter grid: Universal Transverse Mercator, Zone 13S
10 000-foot ticks: Colorado Coordinate System of 1983 (south
zone)

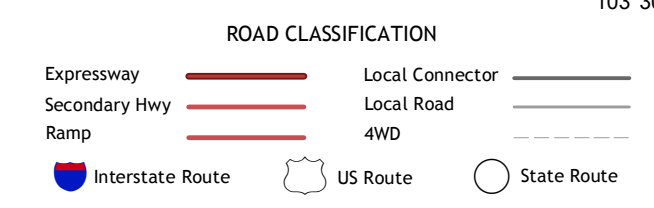
Imagery.....NAIP, July 2011
Roads.....©2006-2012, TomTom
Names.....GNSS, 2013
Hydrography.....National Hydrography Dataset, 2011
Contours.....National Elevation Dataset, 2007
Boundaries.....Census, IRW, IIC, USGS, 1972 - 2012
Public Land Survey System.....BLM, 2011



This map was produced to conform with the
National Geospatial Program US Topo Product Standard, 2011.
A metadata file associated with this product is draft version 0.6.14



Box Springs	The Pinnacles	Trimble Lake
Lake Henry	Todd Point	Houston Lakes
Sugar City	Meredith Hill	Lewis Ranch



TODD POINT, CO
2013

ADJOINING 7.5 QUADRANGLES