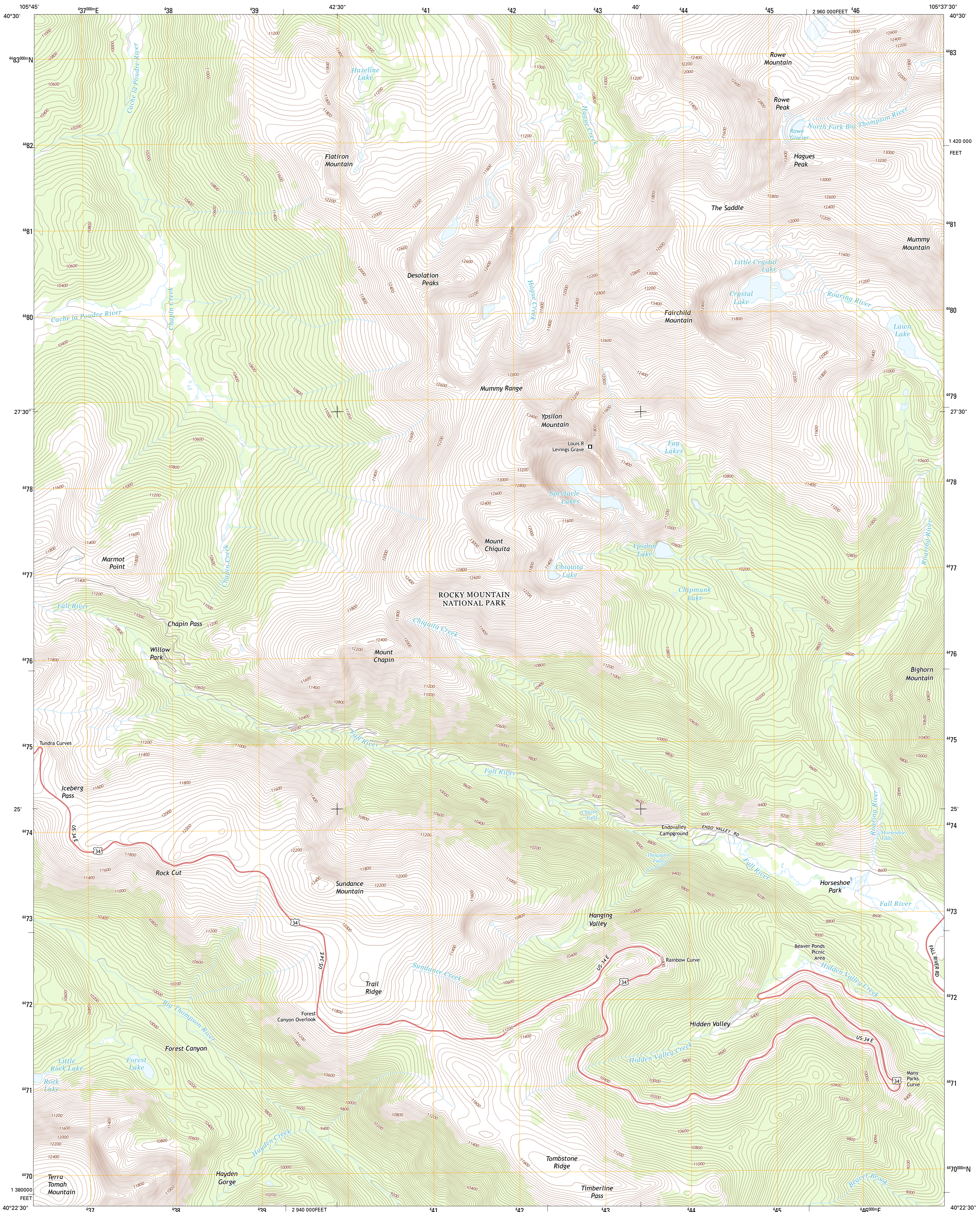




U.S. DEPARTMENT OF THE INTERIOR
U. S. GEOLOGICAL SURVEY



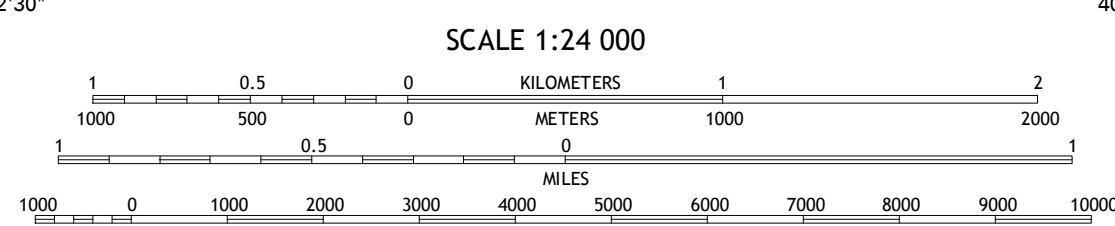
TRAIL RIDGE QUADRANGLE
COLORADO-LARIMER CO.
7.5-MINUTE SERIES



Produced by the United States Geological Survey
North American Datum of 1983 (NAD83)
World Geodetic System of 1984 (WGS84) Projection and
1 000-meter grid: Universal Transverse Mercator, Zone 13T
10 000-foot ticks: Colorado Coordinate System of 1983 (north zone)

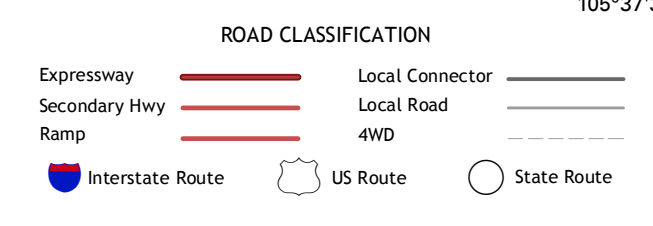
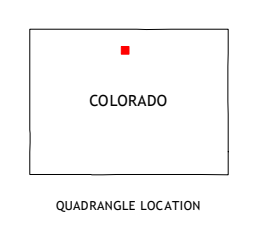
Imagery.....NAIP, August 2011
Roads.....©2006-2012, TomTom
Names.....GNIS, 2013
Hydrography.....National Hydrography Dataset, 2011
Contours.....National Elevation Dataset, 2001
Boundaries, BLM, BIC, USGS, 1972-2012
Public Land Survey System.....BLM, 2011

UTM GRID AND 2013 MAGNETIC NORTH DECLINATION AT CENTER OF SHEET
U.S. National Grid
100,000-m Square ID
DE
Grid Zone Designation
13T



SCALE 1:24 000
CONTOUR INTERVAL 40 FEET
NORTH AMERICAN VERTICAL DATUM OF 1988

This map was produced to conform with the National Geospatial Program US Topo Product Standard, 2011. A metadata file associated with this product is draft version 0.6.14



QUADRANGLE LOCATION

Chambers Lake	Camarache Peak	Pingree Park
Fall River Pass	Trail Ridge	Estes Park
Grand Lake	McHenry Peak	Longs Peak

TRAIL RIDGE, CO
2013

ADJOINING 7.5 QUADRANGLES