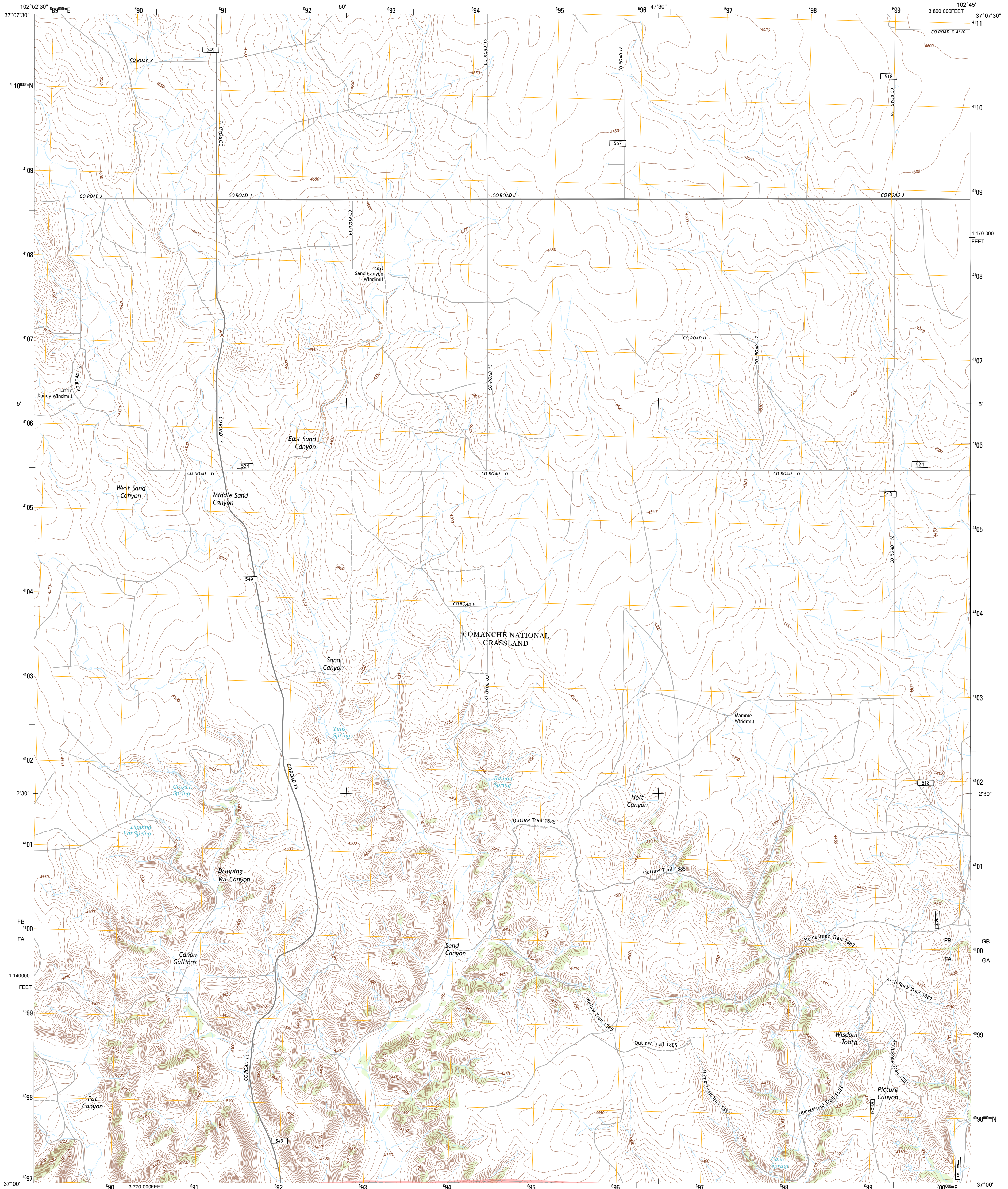




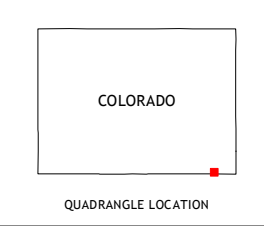
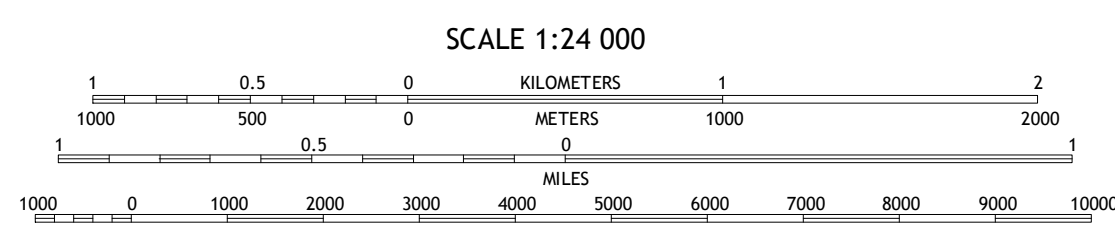
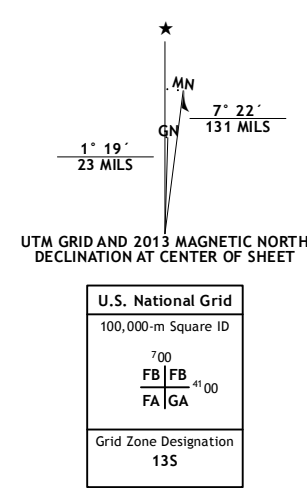
U.S. DEPARTMENT OF THE INTERIOR
U. S. GEOLOGICAL SURVEY



TUBS SPRINGS QUADRANGLE
COLORADO-BACA CO.
7.5-MINUTE SERIES



Produced by the United States Geological Survey
North American Datum of 1983 (NAD83)
World Geodetic System of 1984 (WGS84). Projection and
1:000-meter grid: Universal Transverse Mercator, Zone 13S
10 000-foot ticks: Colorado Coordinate System of 1983 (south
zone)



ROAD CLASSIFICATION

Expressway	Local Connector
Secondary Hwy	Local Road
Ramp	4WD
Interstate Route	US Route
FS Primary Route	FS Route
	FS Passenger Route
	FS High Route
	State Route
	Clearance Route

Check with local Forest Service unit
for current travel conditions and restrictions.

Imagery.....NAIP, May 2010 - July 2011
Roads.....2006-2012 TomTom
Roads within US Forest Service Lands.....FS Topo Data
with limited Forest Service updates, 2013
Names.....GNS, 2013
Hydrography.....National Hydrography Dataset, 2011
Contours.....National Elevation Dataset, 2006
Boundaries.....Census, IBWC, IBC, USGS, 1972 - 2012
Public Land Survey System.....BLM, 2011

CONTOUR INTERVAL 10 FEET
NORTH AMERICAN VERTICAL DATUM OF 1988

This map was produced to conform with the
National Geospatial Program US Topo Product Standard, 2011.
A metadata file associated with this product is draft version 0.6.14

Reader Lake	Edler	Campo NW
Big Hole Canyon	Tubs Springs	Campo SW
Kenton	Kenton NE	Autograph Cliff NW

TUBS SPRINGS, CO
2013

ADJOINING 7.5' QUADRANGLES