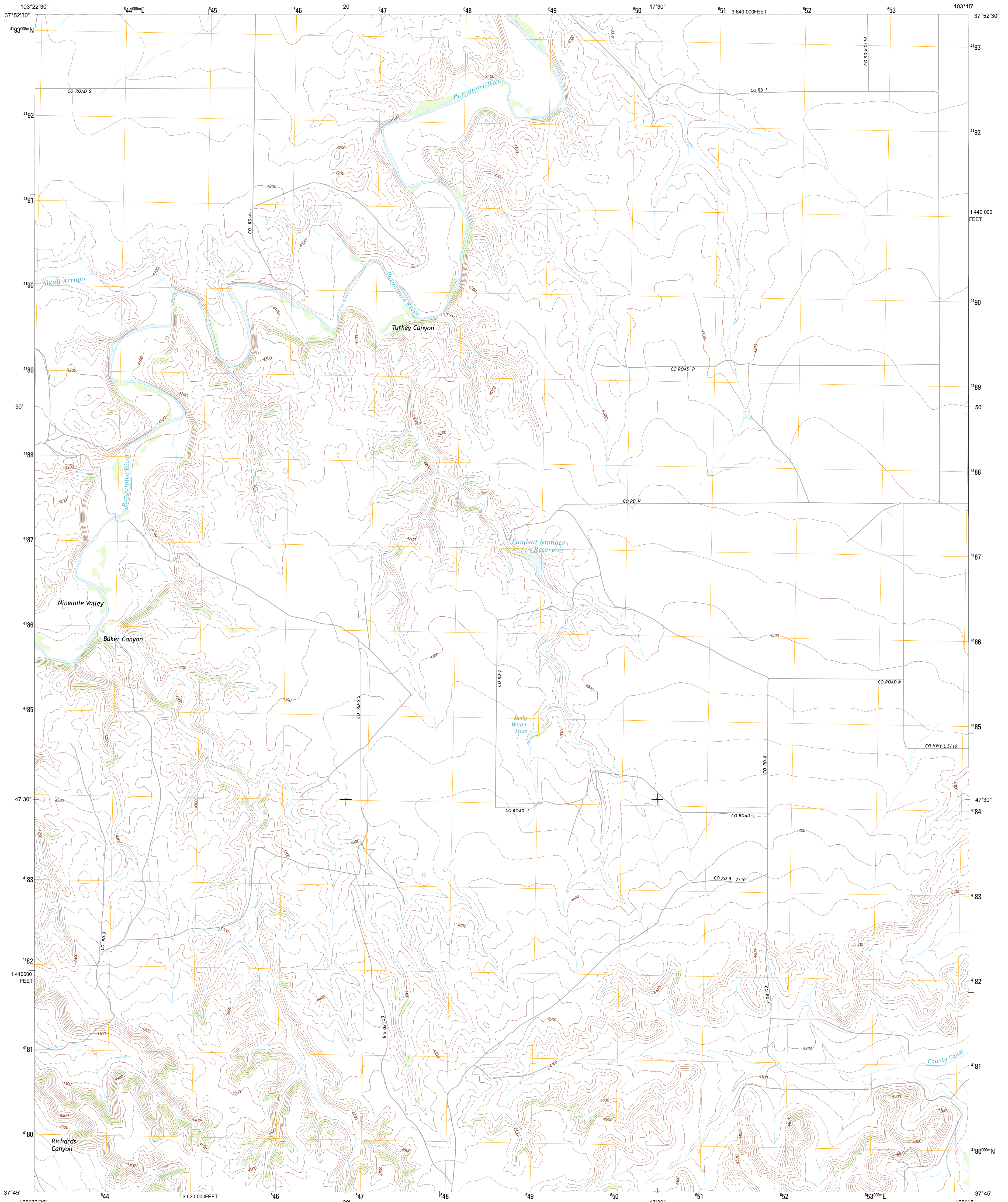




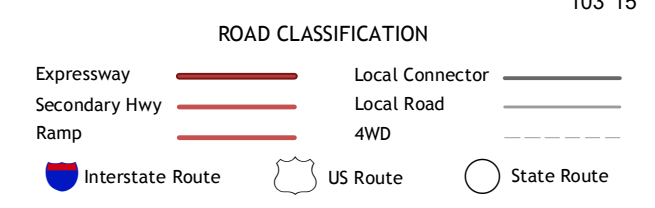
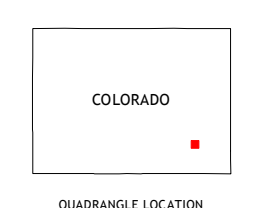
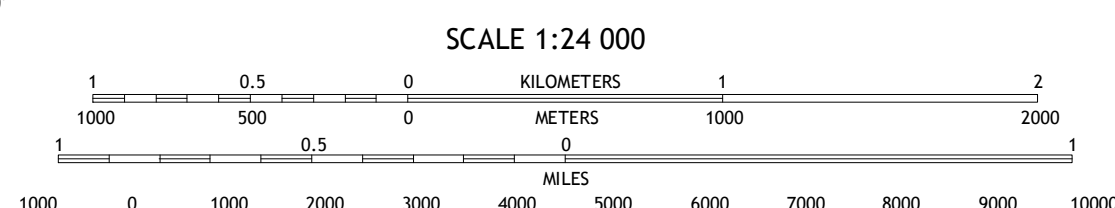
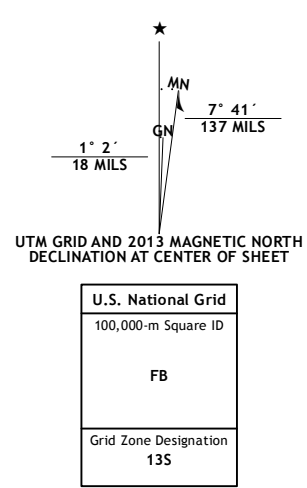
U.S. DEPARTMENT OF THE INTERIOR  
U. S. GEOLOGICAL SURVEY



TURKEY CANYON QUADRANGLE  
COLORADO-BENT CO.  
7.5-MINUTE SERIES



Produced by the United States Geological Survey  
North American Datum of 1983 (NAD83)  
World Geodetic System of 1984 (WGS84) Projection and  
1 000-meter grid: Universal Transverse Mercator, Zone 13S  
10 000-foot ticks: Colorado Coordinate System of 1983 (south zone)



|                 |                 |             |
|-----------------|-----------------|-------------|
| Thompson Arroyo | Hackamore Ranch | Gilpin      |
| Hegbee          | Turkey Canyon   | Toonerville |
| Corbin Canyon   | Rock Canyon     | Ninaview    |

Imagery.....NAIP, July 2011  
Roads.....©2006-2012 TomTom  
Names.....GNIS, 2013  
Hydrography.....National Hydrography Dataset, 2011  
Contours.....National Elevation Dataset, 2007  
Boundaries.....Census, BWC, USGS, 1972-2012  
Public Land Survey System.....BLM, 2011

CONTOUR INTERVAL 20 FEET  
NORTH AMERICAN VERTICAL DATUM OF 1988  
This map was produced to conform with the National Geospatial Program US Topo Product Standard, 2011. A metadata file associated with this product is draft version 0.6.14

TURKEY CANYON, CO  
2013

ADJOINING 7.5 QUADRANGLES