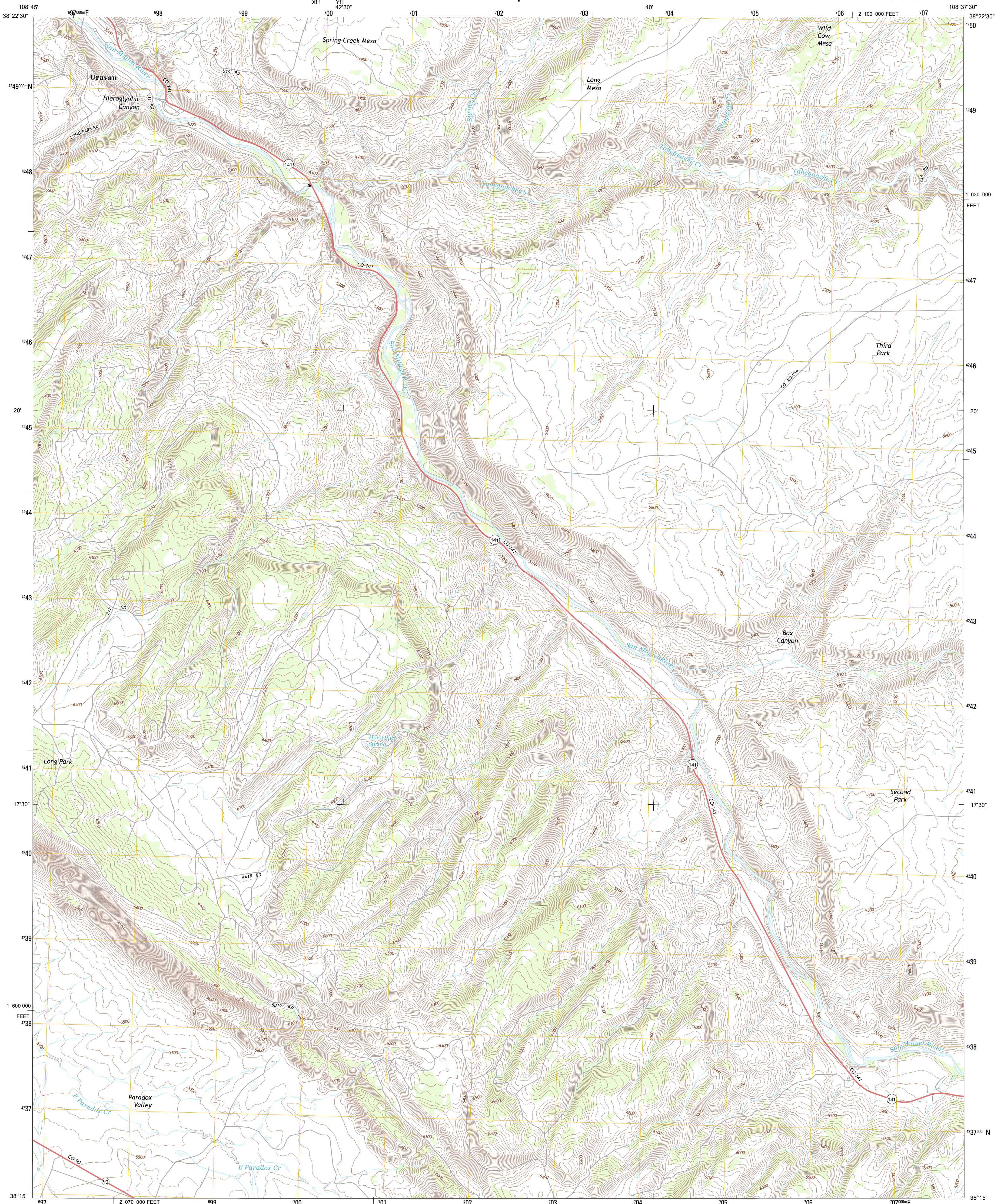




U.S. DEPARTMENT OF THE INTERIOR  
U. S. GEOLOGICAL SURVEY

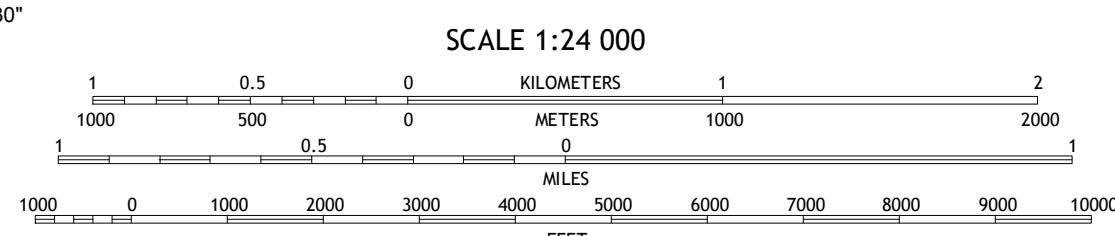
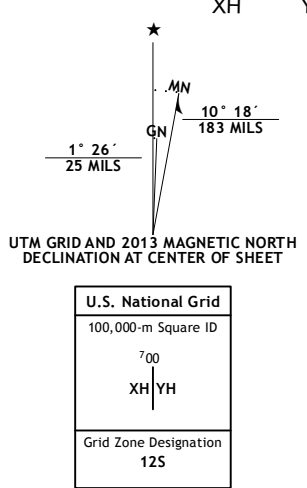


URAVAN QUADRANGLE  
COLORADO-MONTROSE CO.  
7.5-MINUTE SERIES

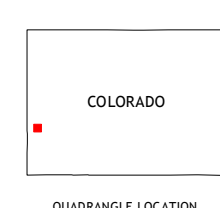


Produced by the United States Geological Survey  
North American Datum of 1983 (NAD83)  
World Geodetic System of 1984 (WGS84) Projection and  
1 000-meter grid; Universal Transverse Mercator, Zone 12S  
10 000-foot ticks; Colorado Coordinate System of 1983 (south zone)

Imagery.....NAIP, July 2011 - September 2011  
Roads.....©2006-2012 TomTom  
Names.....©2013  
Hydrography.....National Hydrography Dataset, 2011  
Contours.....National Elevation Dataset, 2005  
Boundaries.....BWC, BIC, USGS, 1972 - 2012  
Public Land Survey System.....BLM, 2011

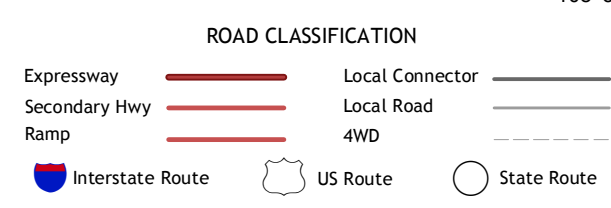


SCALE 1:24 000  
CONTOUR INTERVAL 20 FEET  
NORTH AMERICAN VERTICAL DATUM OF 1988  
This map was produced to conform with the  
National Geospatial Program US Topo Product Standard, 2011.  
A metadata file associated with this product is draft version 0.6.14



QUADRANGLE LOCATION

Red Canyon	Atkinson Creek	Windy Point
Davis Mesa	Uravan	Nucla
Bull Canyon	Naturita NW	Naturita



URAVAN, CO  
2013

ADJOINING 7.5 QUADRANGLES