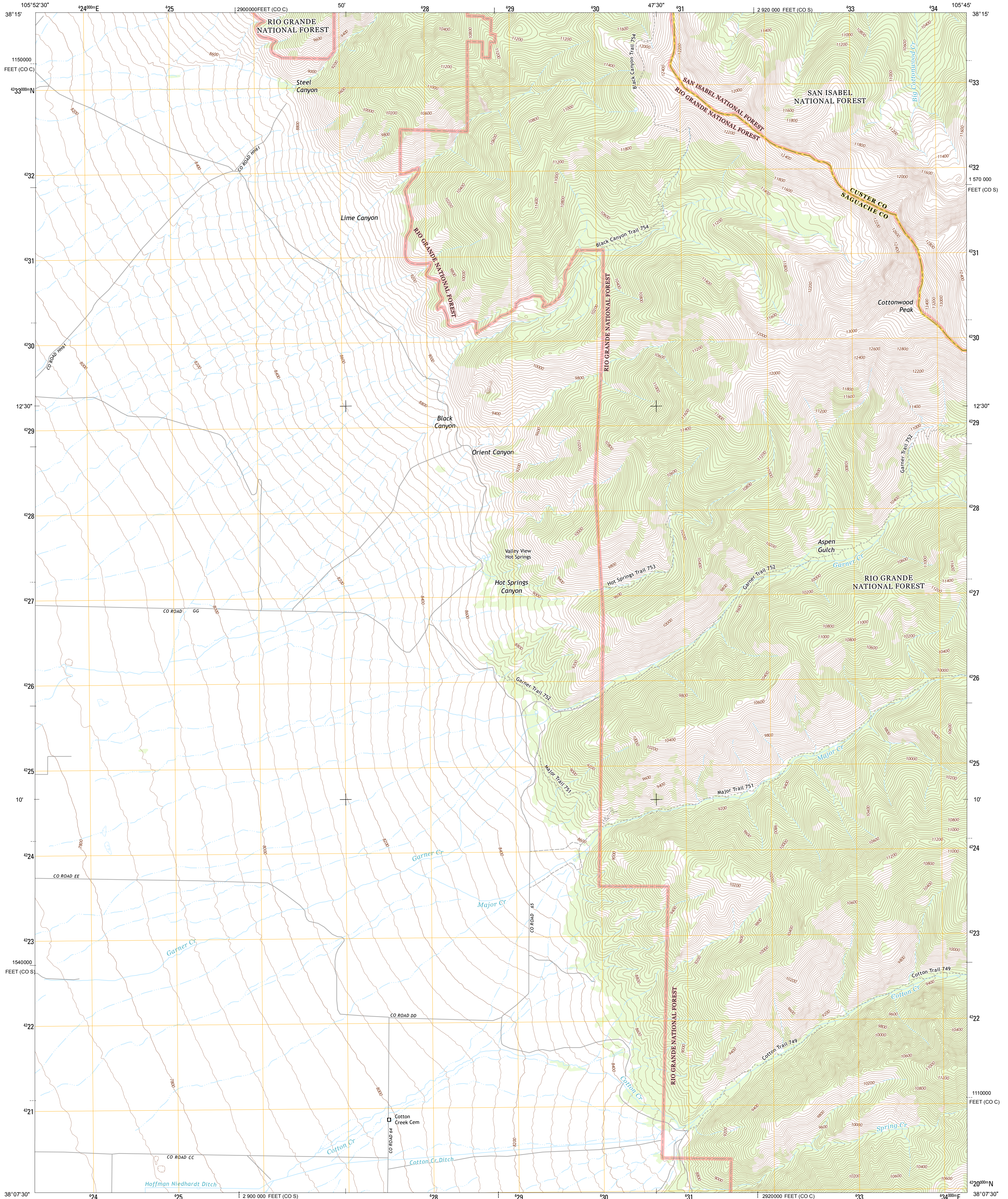




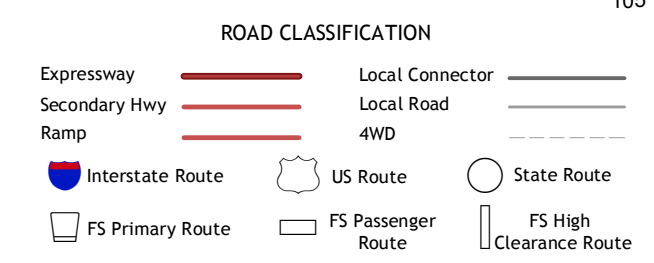
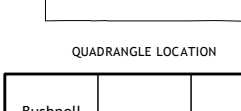
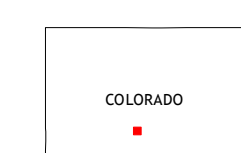
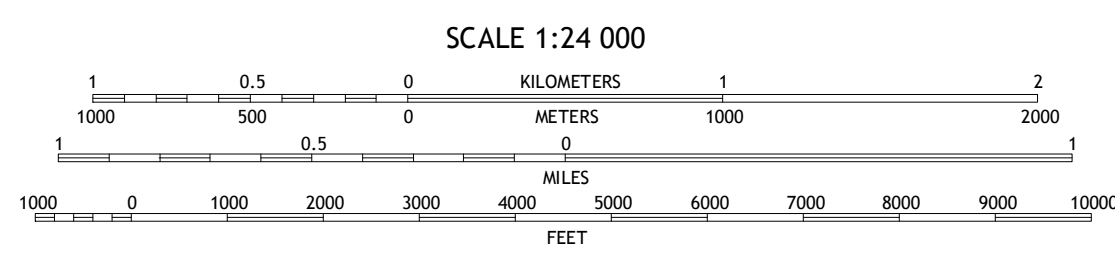
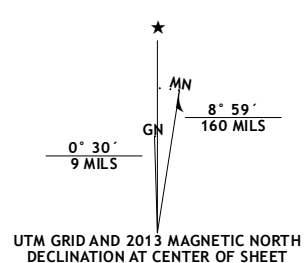
U.S. DEPARTMENT OF THE INTERIOR  
U. S. GEOLOGICAL SURVEY



VALLEY VIEW HOT SPRINGS QUADRANGLE  
COLORADO  
7.5-MINUTE SERIES



Produced by the United States Geological Survey  
North American Datum of 1983 (NAD83)  
World Geodetic System of 1984 (WGS84) Projection and  
1 000-meter grid: Universal Transverse Mercator, Zone 13S  
10 000-foot ticks: Colorado Coordinate System of 1983 (south zone)



Check with local Forest Service unit for current travel conditions and restrictions.

Imagery.....NAP, August 2011  
Roads.....©2006-2012 TomTom  
Roads within US Forest Service Lands with limited Forest Service updates, 2013  
Names.....©GNS, 2013  
Hydrography.....National Hydrography Dataset, 2011  
Contours.....National Elevation Dataset, 2012  
Boundaries.....Census, IBC, USGS, 1972  
Public Land Survey System.....BLM, 2011

CONTOUR INTERVAL 40 FEET  
NORTH AMERICAN VERTICAL DATUM OF 1988

This map was produced to conform with the National Geospatial Program US Topo Product Standard, 2011. A metadata file associated with this product is draft version 0.6.14

VALLEY VIEW HOT SPRINGS, CO  
2013

ADJACENT 7.5 QUADRANGLES