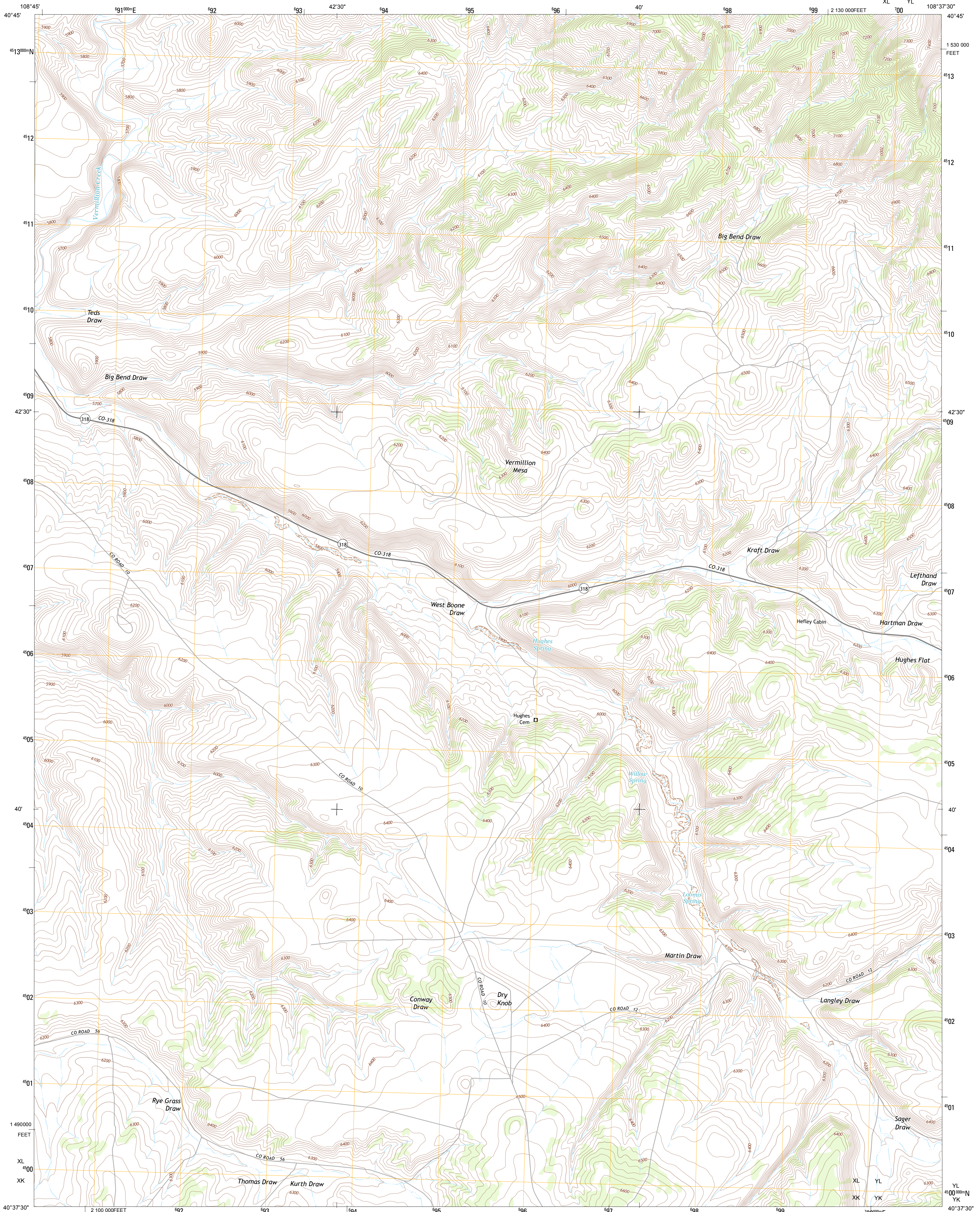




U.S. DEPARTMENT OF THE INTERIOR  
U. S. GEOLOGICAL SURVEY

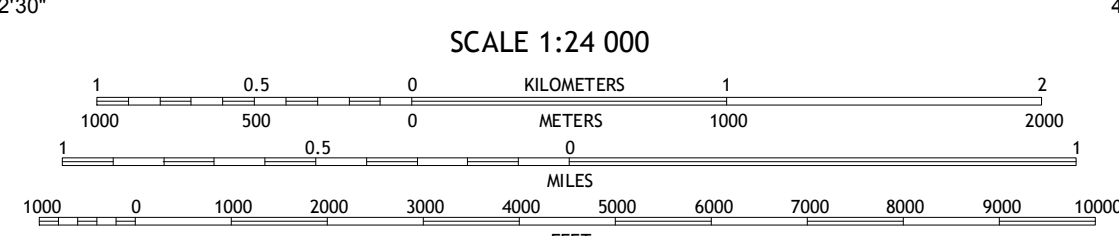
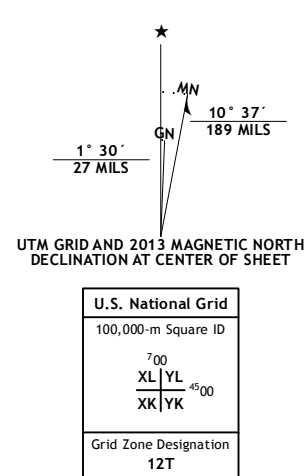


VERMILLION MESA QUADRANGLE  
COLORADO-MOFFAT CO.  
7.5-MINUTE SERIES  
XL YL

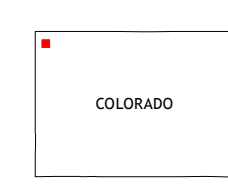


Produced by the United States Geological Survey  
North American Datum of 1983 (NAD83)  
World Geodetic System of 1984 (WGS84). Projection and  
1 000-meter grid: Universal Transverse Mercator, Zone 12T  
10 000-foot ticks: Colorado Coordinate System of 1983 (north zone)

Imagery.....NAIP, July 2011  
Roads.....©2006-2012 TomTom  
Names.....©2013  
Hydrography.....National Hydrography Dataset, 2011  
Contours.....National Elevation Dataset, 2003  
Boundaries, BWC, BIC, USGS, 1972-2012  
Public Land Survey System.....BLM, 2011

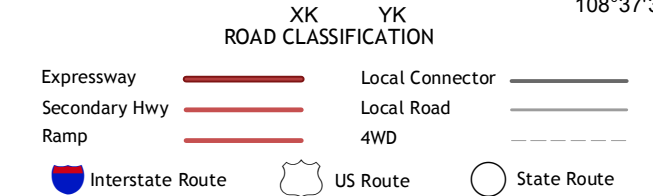


CONTOUR INTERVAL 20 FEET  
NORTH AMERICAN VERTICAL DATUM OF 1988  
This map was produced to conform with the  
National Geospatial Program US Topo Product Standard, 2011.  
A metadata file associated with this product is draft version 0.6.14



QUADRANGLE LOCATION

Big Joe Basin	Irish Canyon	G Spring
Jack Springs	Vermillion Mesa	Sheephead Basin
Zenobia Peak	Greystone	Limestone Hill



VERMILLION MESA, CO  
2013

ADJOINING 7.5 QUADRANGLES