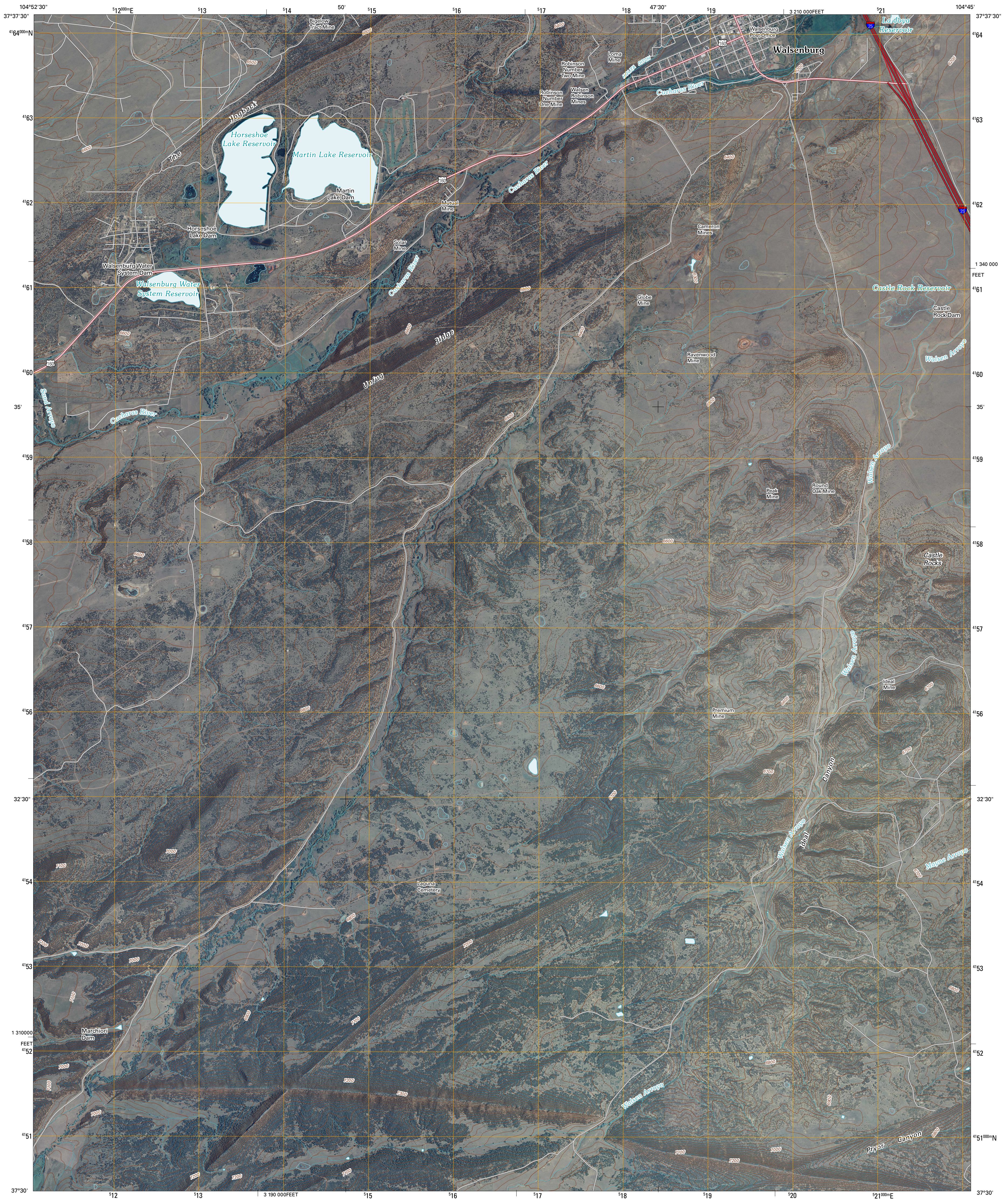




U.S. DEPARTMENT OF THE INTERIOR  
U. S. GEOLOGICAL SURVEY

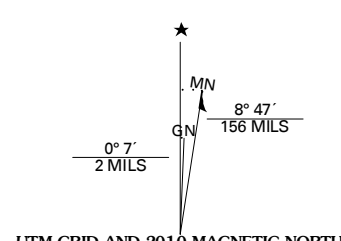


WALSBERG SOUTH QUADRANGLE  
COLORADO  
7.5-MINUTE SERIES

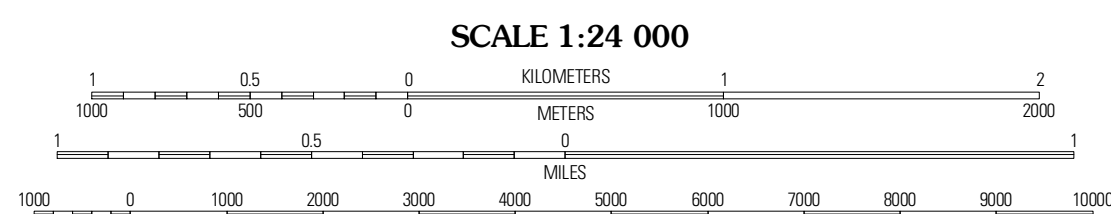


Produced by the United States Geological Survey  
North American Datum of 1983 (NAD83)  
World Geodetic System of 1984 (WGS84). Projection and  
1 000-meter grid: Universal Transverse Mercator, Zone 13S  
10 000-foot ticks: Colorado Coordinate System of 1983  
(south zone)

Imagery.....NAP, July 2009  
Roads.....©2006-2010 Tele Atlas  
Names.....GNIS, 2008  
Hydrography.....National Hydrography Dataset, 2009  
Contours.....National Elevation Dataset, 2007

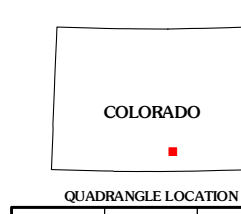


U.S. National Grid	100,000m Square ID
EB	
Grid Zone Designation	13S



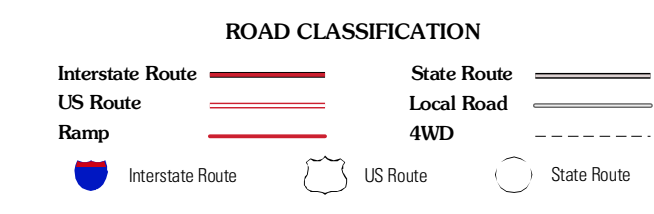
CONTOUR INTERVAL 20 FEET  
NORTH AMERICAN VERTICAL DATUM OF 1988

This map was produced to conform with version 0.5.10 of the  
draft USGS Standards for 7.5-Minute Quadrangle Maps.  
A metadata file associated with this product is draft version 0.5.11



Black Hills	Walsberg North	Martin Reservoir
Ritter Arroyo	Walsberg South	Pryor
Spanish Peaks	Santa Clara	Agullar

ADJOINING 7.5 QUADRANGLES



WALSBERG SOUTH, CO  
2010