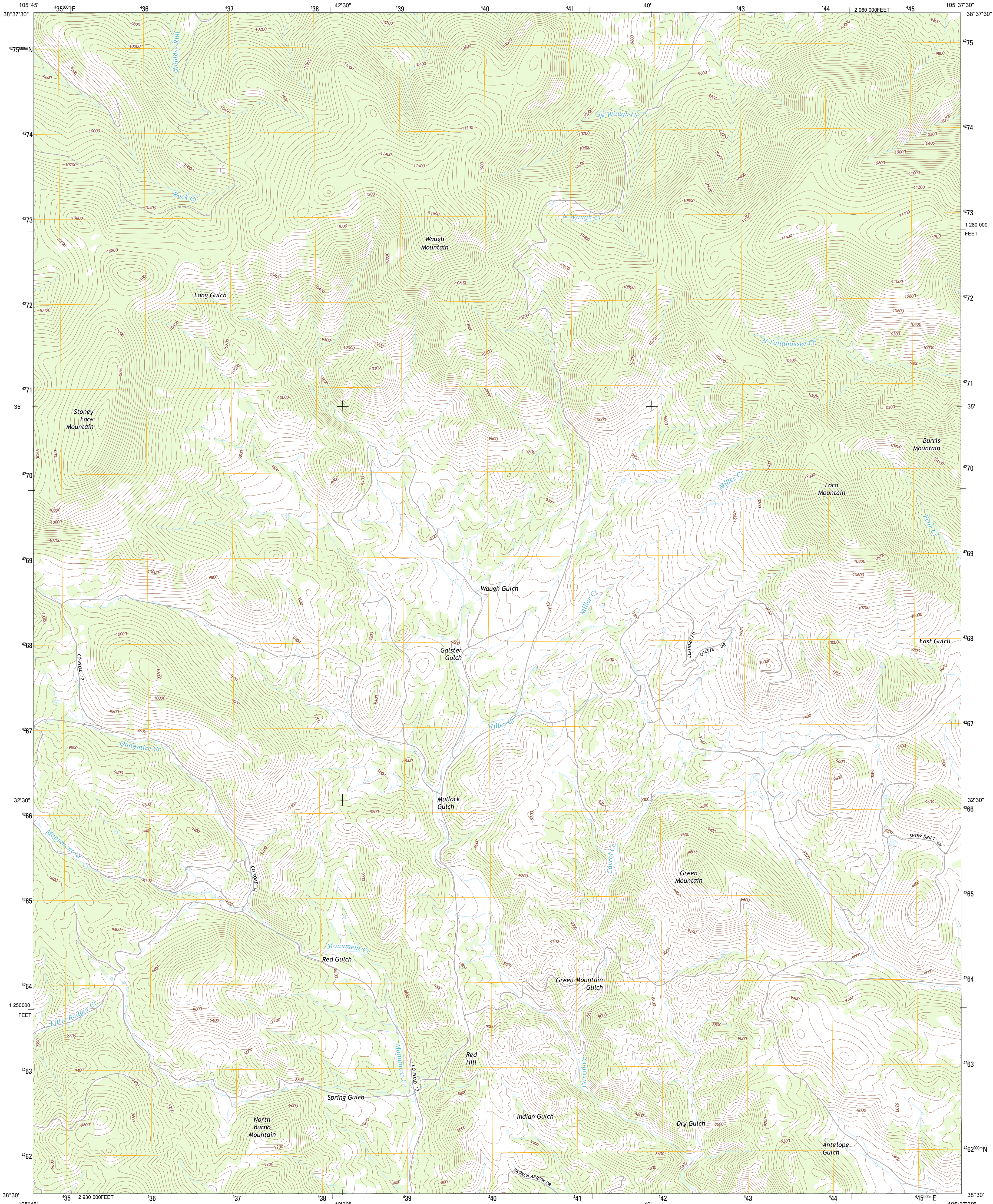




U.S. DEPARTMENT OF THE INTERIOR
U. S. GEOLOGICAL SURVEY

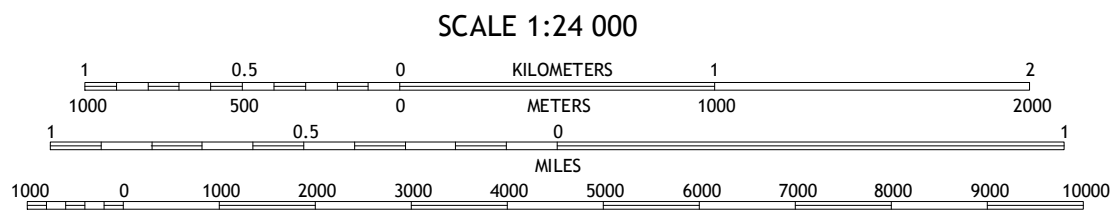
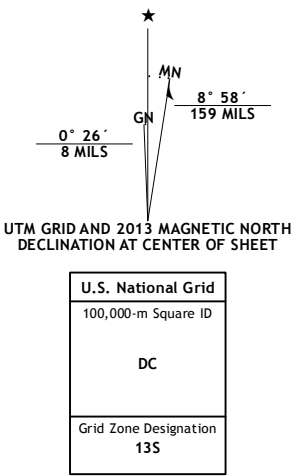


WAUGH MOUNTAIN QUADRANGLE
COLORADO-FREMONT CO.
7.5-MINUTE SERIES



Produced by the United States Geological Survey
North American Datum of 1983 (NAD83)
World Geodetic System of 1984 (WGS84). Projection and
1 000-meter grid: Universal Transverse Mercator, Zone 13S
10 000-foot ticks: Colorado Coordinate System of 1983 (central
zone)

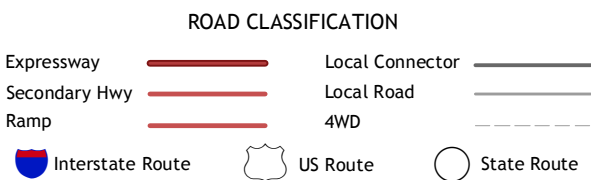
Imagery.....NAIP, September 2011
Roads.....©2006-2012 TomTom
Names.....GNS, 2013
Hydrography.....National Hydrography Dataset, 2011
Contours.....National Elevation Dataset, 2005
Boundaries.....Census, BWC, IBC, USGS, 1972 - 2012
Public Land Survey System.....BLM, 2011



This map was produced to conform with the
National Geospatial Program US Topo Product Standard, 2011.
A metadata file associated with this product is draft version 0.6.14



Gribbles Park	Black Mountain	Thirtyone Mile Mountain
Jack Hall Mountain	Waugh Mountain	Hall Gulch
Howard	Arkansas Mountain	Echo



WAUGH MOUNTAIN, CO
2013