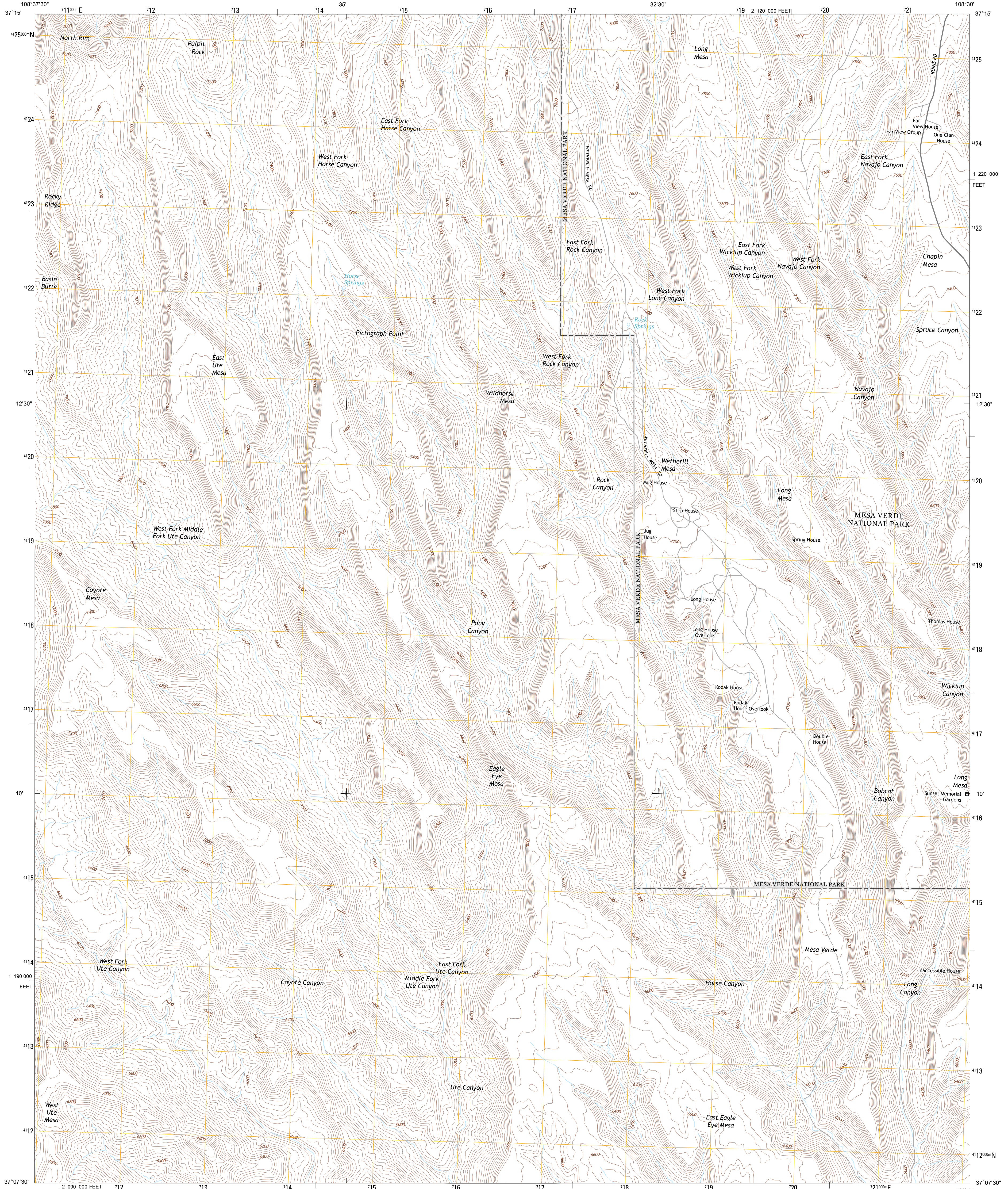




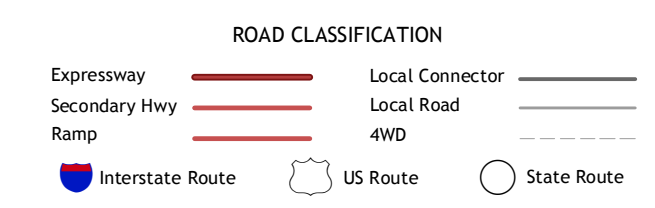
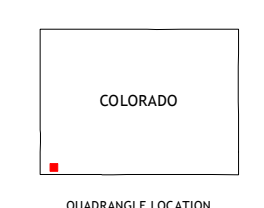
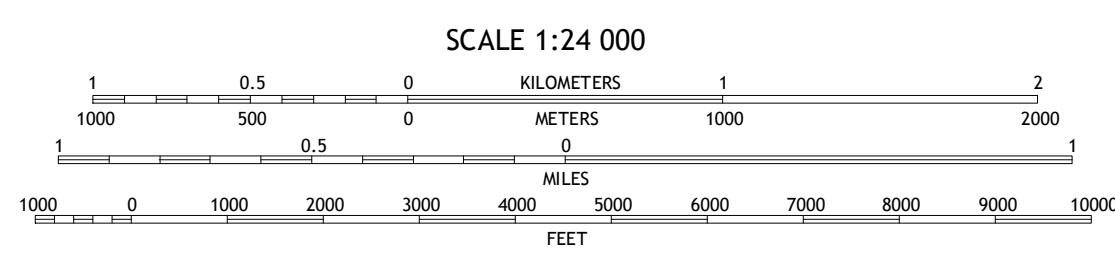
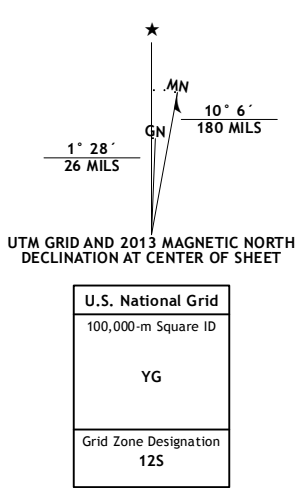
U.S. DEPARTMENT OF THE INTERIOR  
U. S. GEOLOGICAL SURVEY



WETHERILL MESA QUADRANGLE  
COLORADO-MONTEZUMA CO.  
7.5-MINUTE SERIES



Produced by the United States Geological Survey  
North American Datum of 1983 (NAD83)  
World Geodetic System of 1984 (WGS84). Projection and  
1 000-meter grid: Universal Transverse Mercator, Zone 12S  
10 000-foot ticks: Colorado Coordinate System of 1983 (south  
zone)



Imagery.....NAIP, July 2011  
Roads.....©2006-2012, TomTom  
NAMES.....GNLS, 2013  
Hydrography.....National Hydrography Dataset, 2011  
Contours.....National Elevation Dataset, 2005  
Boundaries.....IBWC, IBC, USGS, 1972 - 2012  
Public Land Survey System.....BLM, 2011

U.S. National Grid
100,000-m Square ID
YG
Grid Zone Designation
12S

CONTOUR INTERVAL 40 FEET  
NORTH AMERICAN VERTICAL DATUM OF 1988  
This map was produced to conform with the  
National Geospatial Program US Topo Product Standard, 2011.  
A metadata file associated with this product is draft version 0.6.14

Mud Creek	Cortez	Point Lookout
Tanner Mesa	Wetherill Mesa	Mocasin Mesa
Tanner Mesa	Noqui Canyon	Greeswood Canyon

WETHERILL MESA, CO  
2013

ADJOINING 7.5 QUADRANGLES