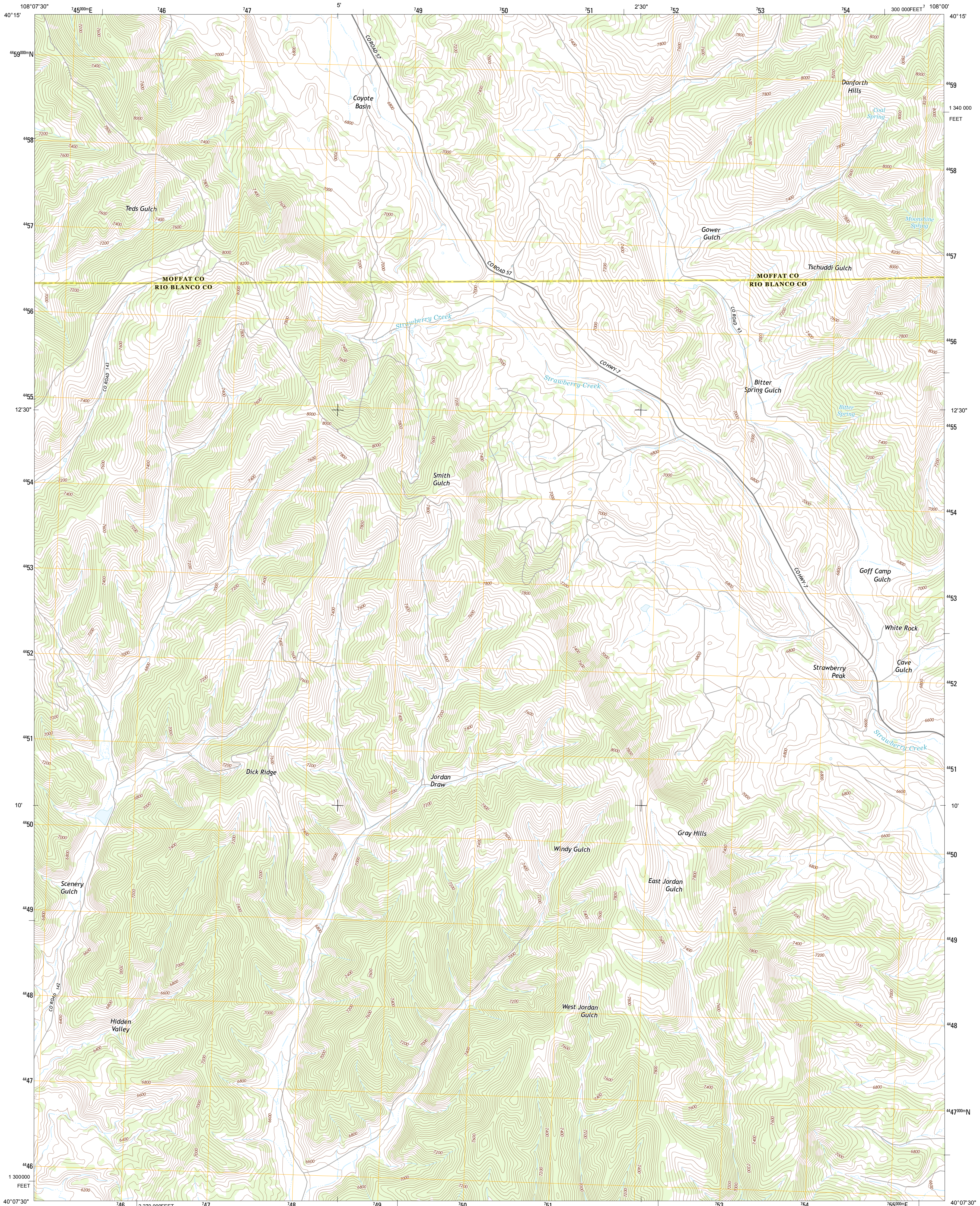




U.S. DEPARTMENT OF THE INTERIOR  
U. S. GEOLOGICAL SURVEY

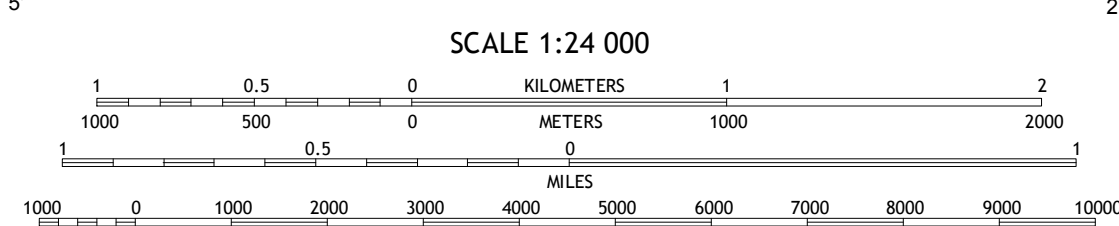
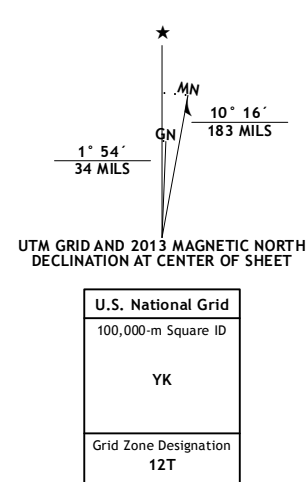


WHITE ROCK QUADRANGLE  
COLORADO  
7.5-MINUTE SERIES



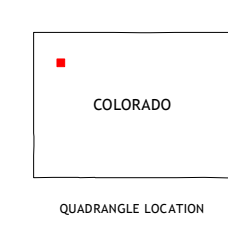
Produced by the United States Geological Survey  
North American Datum of 1983 (NAD83)  
World Geodetic System of 1984 (WGS84). Projection and  
1000-meter grid: Universal Transverse Mercator, Zone 12T  
10 000-foot ticks: Colorado Coordinate System of 1983 (north  
zone)

Imagery.....NAIP, July 2011  
Roads.....©2006-2012 TomTom  
Names.....GNIS, 2013  
Hydrography.....National Hydrography Dataset, 2011  
Contours.....National Elevation Dataset, 2004  
Boundaries.....IBWC, IBC, USGS, 1972-2012  
Public Land Survey System.....BLM, 2011



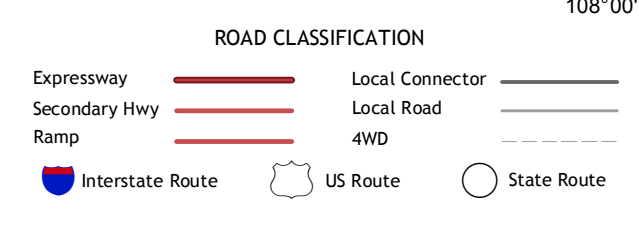
CONTOUR INTERVAL 40 FEET  
NORTH AMERICAN VERTICAL DATUM OF 1988

This map was produced to conform with the  
National Geospatial Program US Topo Product Standard, 2011.  
A metadata file associated with this product is draft version 0.6.14



QUADRANGLE LOCATION

Citadel Plateau	Price Creek	Easton Gulch
Indian Valley	White Rock	Devils Hole Gulch
White River City	Buckskin Point	Weeker



WHITE ROCK, CO  
2013

ADJOINING 7.5 QUADRANGLES