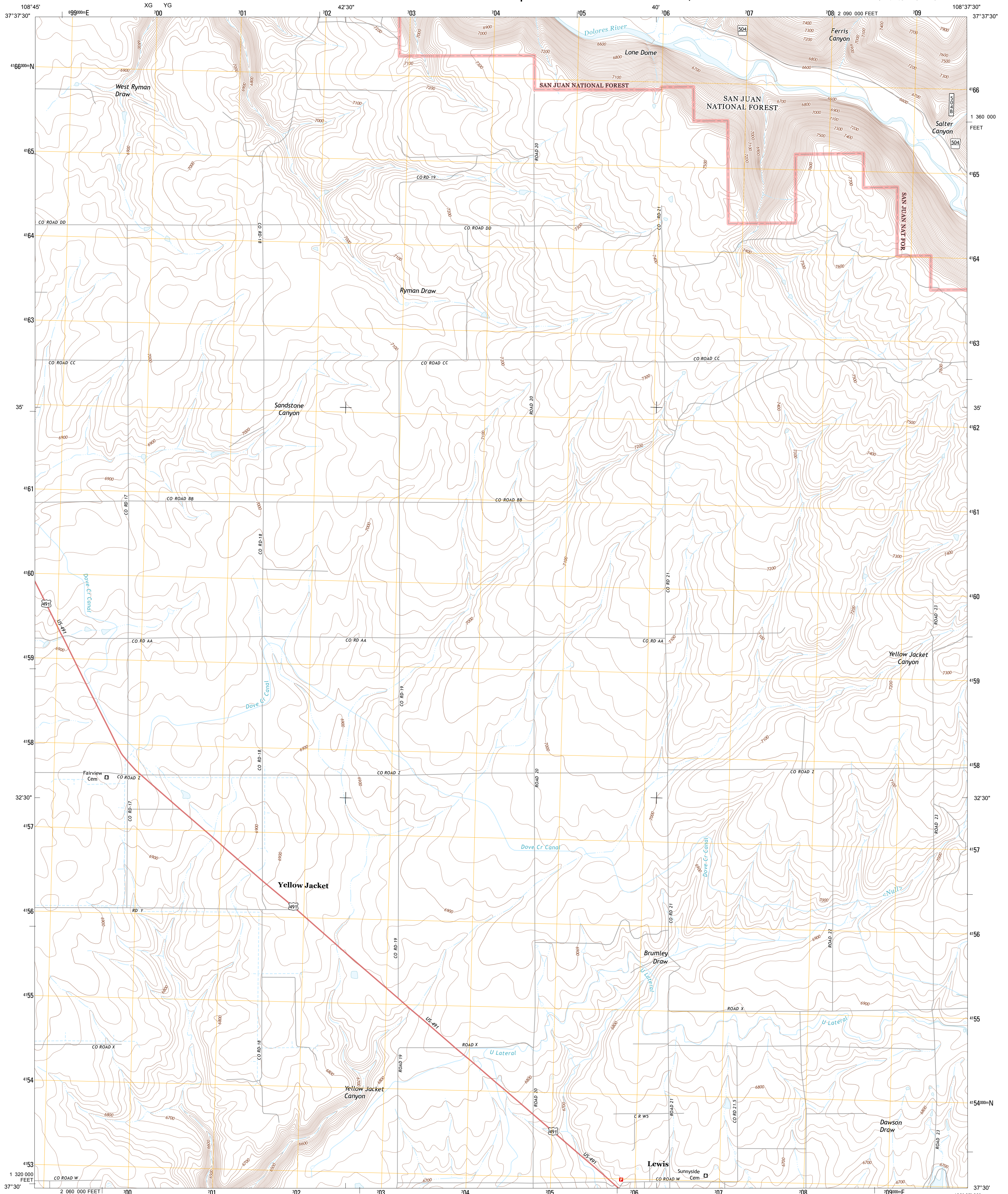




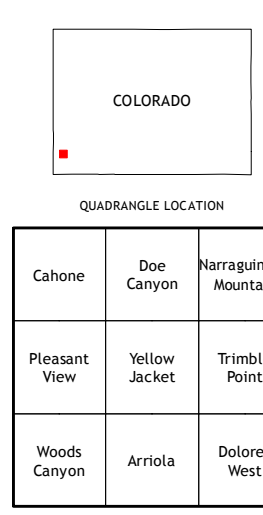
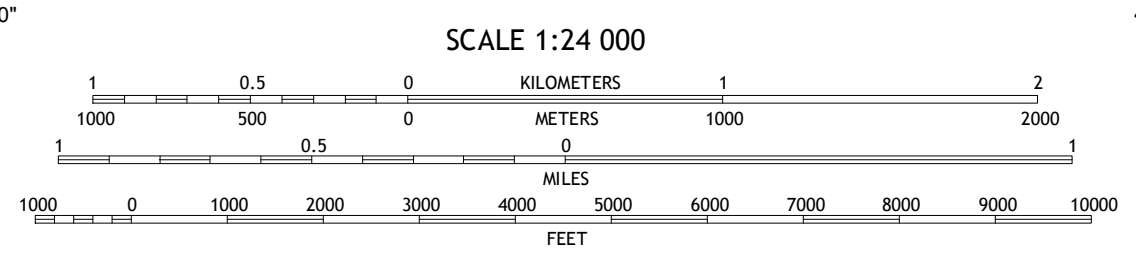
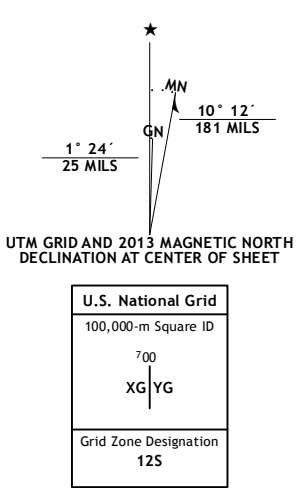
U.S. DEPARTMENT OF THE INTERIOR
U. S. GEOLOGICAL SURVEY



YELLOW JACKET QUADRANGLE
COLORADO-MONTEZUMA CO.
7.5-MINUTE SERIES



Produced by the United States Geological Survey
North American Datum of 1983 (NAD83)
World Geodetic System of 1984 (WGS84). Projection and
1 000-meter grid: Universal Transverse Mercator, Zone 12S
10 000-foot ticks: Colorado Coordinate System of 1983 (south
zone)



- ROAD CLASSIFICATION
- Expressway
 - Secondary Hwy
 - Ramp
 - Interstate Route
 - US Route
 - FS Primary Route
 - FS Passenger Route
 - Local Connector
 - Local Road
 - 4WD
 - State Route
 - FS High
 - Clearance Route
- Check with local Forest Service unit for current travel conditions and restrictions.

YELLOW JACKET, CO
2013

Imagery.....NAIP, July 2011 - September 2011
Roads.....TomTom
Roads within US Forest Service Lands.....FS Topo Data
with limited Forest Service updates, 2013
Names.....GNIS, 2013
Hydrography.....National Hydrography Dataset, 2011
Contours.....National Elevation Dataset, 2005
Boundaries.....Census, IBWC, IBC, USGS, 1972 - 2012
Public Land Survey System.....BLM, 2011

CONTOUR INTERVAL 20 FEET
NORTH AMERICAN VERTICAL DATUM OF 1988

This map was produced to conform with the
National Geospatial Program US Topo Product Standard, 2011.
A metadata file associated with this product is draft version 0.6.14

ADJOINING 7.5 QUADRANGLES