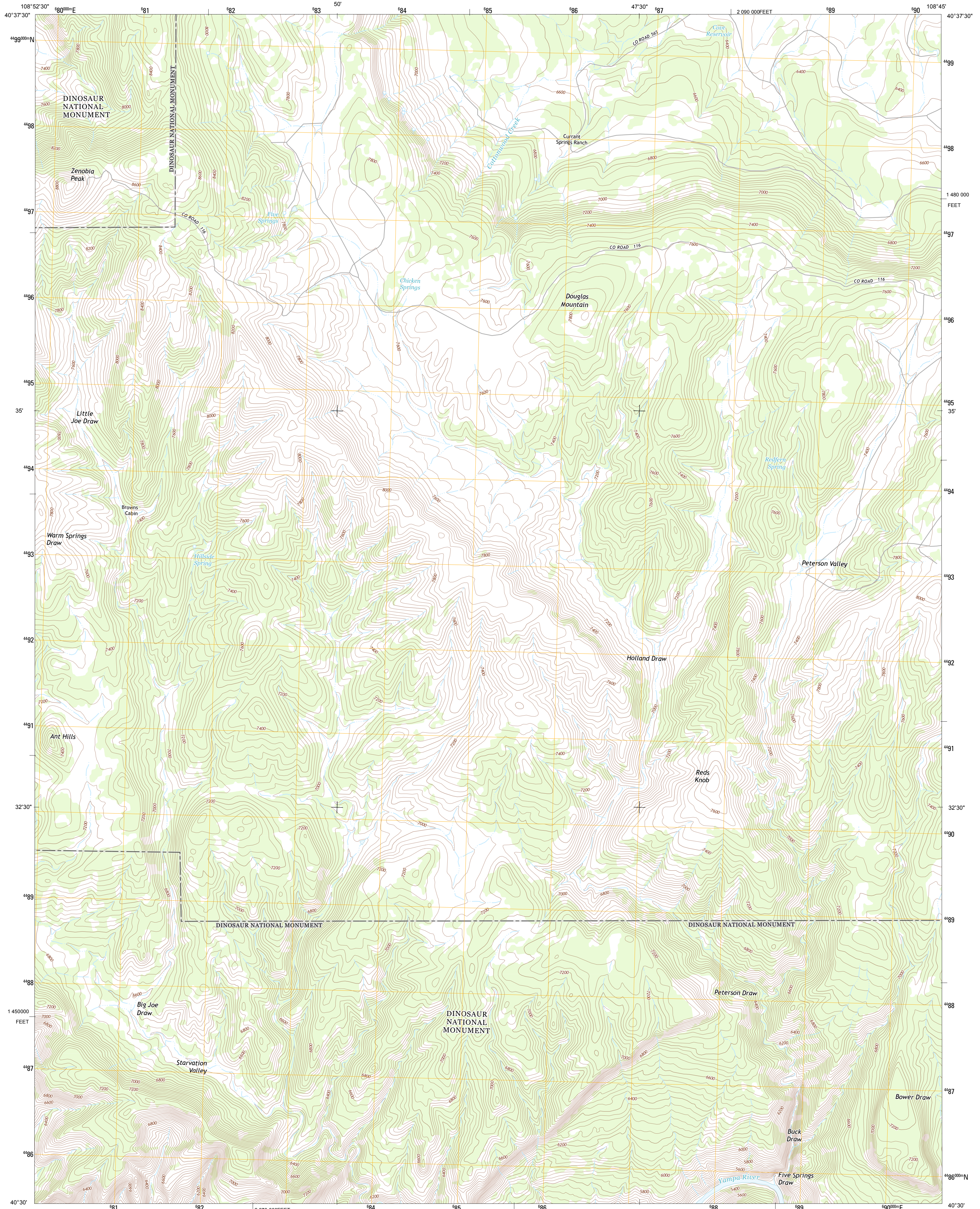




U.S. DEPARTMENT OF THE INTERIOR  
U. S. GEOLOGICAL SURVEY



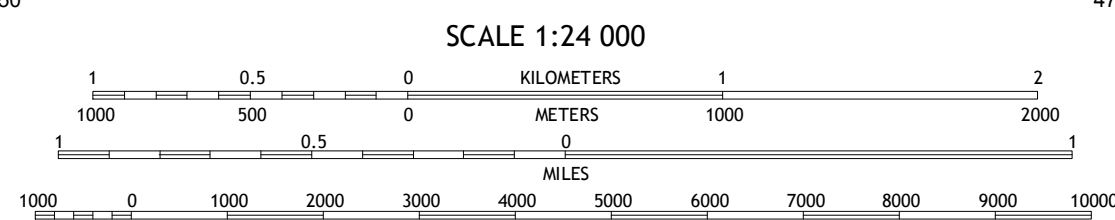
ZENOBIA PEAK QUADRANGLE  
COLORADO-MOFFAT CO.  
7.5-MINUTE SERIES



Produced by the United States Geological Survey  
North American Datum of 1983 (NAD83)  
World Geodetic System of 1984 (WGS84), Projection and  
1 000-meter grid; Universal Transverse Mercator, Zone 12T  
10 000-foot ticks; Colorado Coordinate System of 1983 (north  
zone)

Imagery.....NAIP, July 2011  
Roads.....©2006-2012 TomTom  
Names.....©2013 GNS, 2013  
Hydrography.....National Hydrography Dataset, 2011  
Contours.....National Elevation Dataset, 2003  
Boundaries.....BLS, IBC, USGS, 1972-2012  
Public Land Survey System.....BLM, 2011

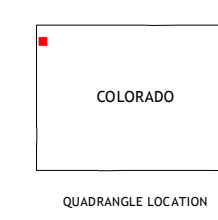
UTM GRID AND 2013 MAGNETIC NORTH  
DECLINATION AT CENTER OF SHEET  
U.S. National Grid  
100,000-m Square ID  
XX  
Grid Zone Designation  
12T



SCALE 1:24 000

CONTOUR INTERVAL 40 FEET  
NORTH AMERICAN VERTICAL DATUM OF 1988

This map was produced to conform with the  
National Geospatial Program US Topo Product Standard, 2011.  
A metadata file associated with this product is draft version 0.6.14



ROAD CLASSIFICATION  
Expressway  
Secondary Hwy  
Ramp  
Interstate Route  
Local Connector  
Local Road  
4WD  
US Route  
State Route

QUADRANGLE LOCATION

Canyon of Lodore North	Jack Springs	Vermilion Mesa
Canyon of Lodore South	Zenobia Peak	Greystone
Hells Canyon	Tanks Peak	Haystack

ZENOBIA PEAK, CO  
2013

ADJOINING 7.5' QUADRANGLES