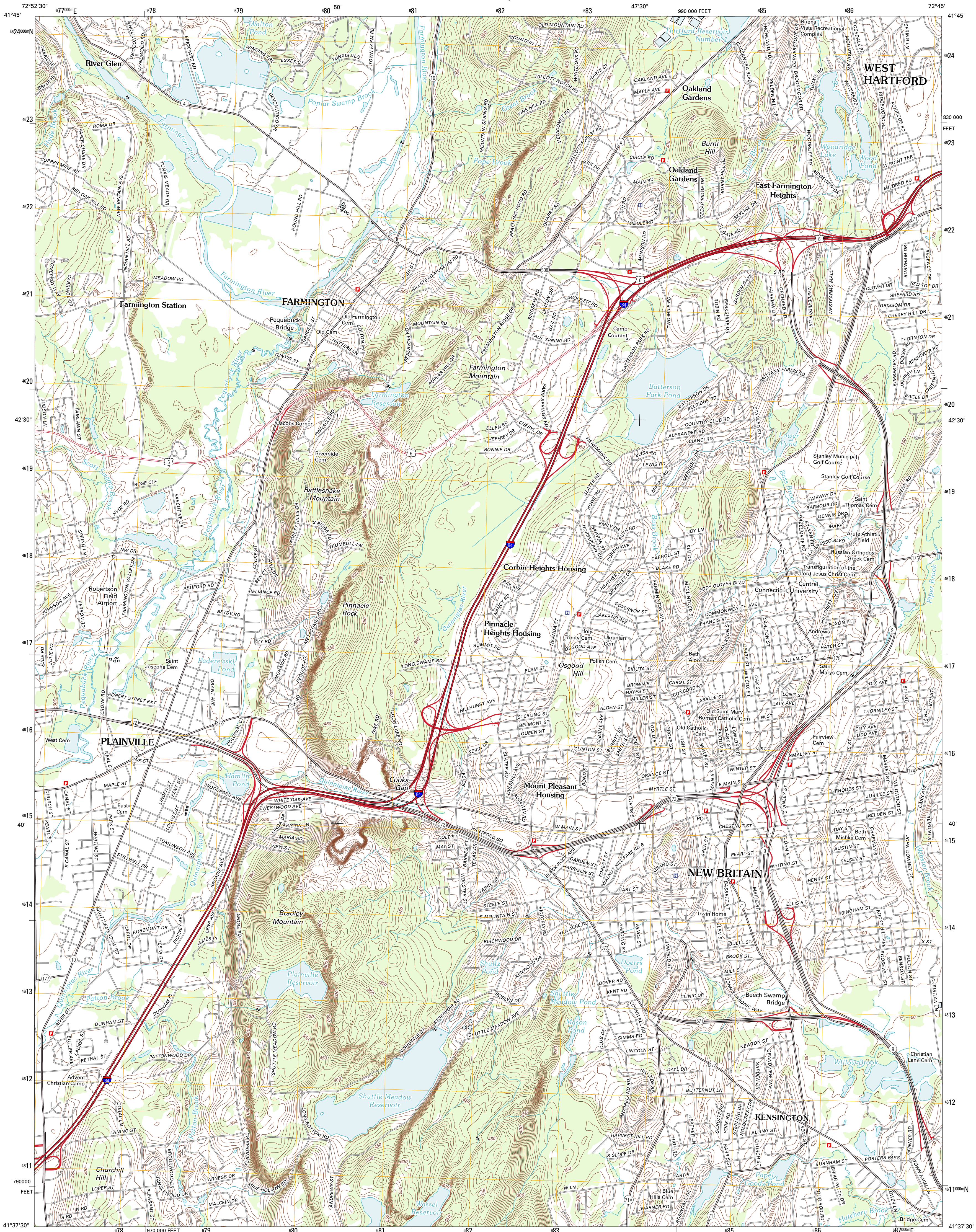




U.S. DEPARTMENT OF THE INTERIOR  
U. S. GEOLOGICAL SURVEY

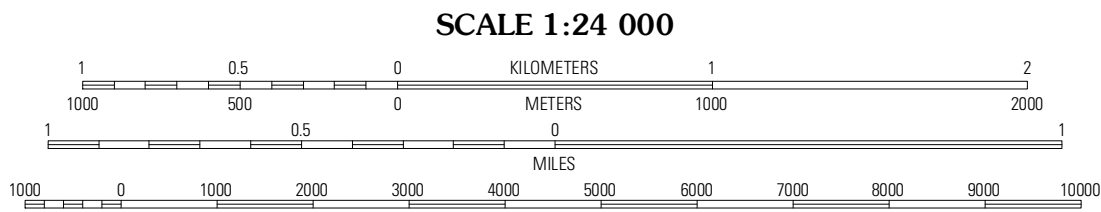
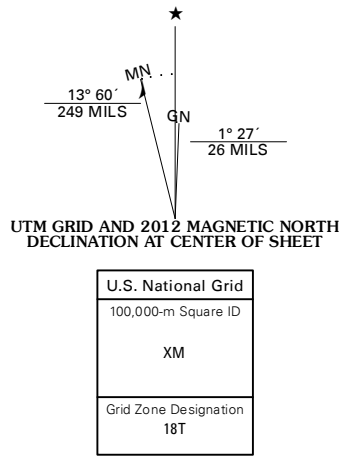


NEW BRITAIN QUADRANGLE  
CONNECTICUT-HARTFORD CO.  
7.5-MINUTE SERIES

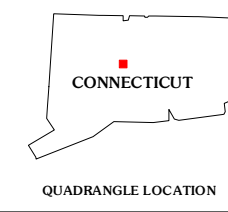


Produced by the United States Geological Survey  
North American Datum of 1983 (NAD83)  
World Geodetic System of 1984 (WGS84). Projection and  
1 000 meter grid: Universal Transverse Mercator, Zone 18T  
10 000-foot ticks: Connecticut Coordinate System of 1983

Imagery.....NAIP, August 2010  
Roads.....©2006-2011, TomTom  
Names.....©2006-2011, TomTom  
Hydrography.....National Hydrography Dataset, 2010  
Contours.....National Elevation Dataset, 2012  
Boundaries.....Census, IBWC, IBG, USGS, 1972 - 2010



CONTOUR INTERVAL 10 FEET  
NORTH AMERICAN VERTICAL DATUM OF 1988  
This map was produced to conform with the  
National Geospatial Program US Topo Product Standard, 2011.  
A metadata file associated with this product is draft version 0.6.2



ADJOINING 7.5 QUADRANGLES		
Collinsville	Avon	Hartford North
Bristol	New Britain	Hartford South
Southington	Merkiden	Middletown

ROAD CLASSIFICATION	
Interstate Route	State Route
US Route	Local Road
Ramp	4WD
Interstate Route	US Route
State Route	State Route

NEW BRITAIN, CT  
2012