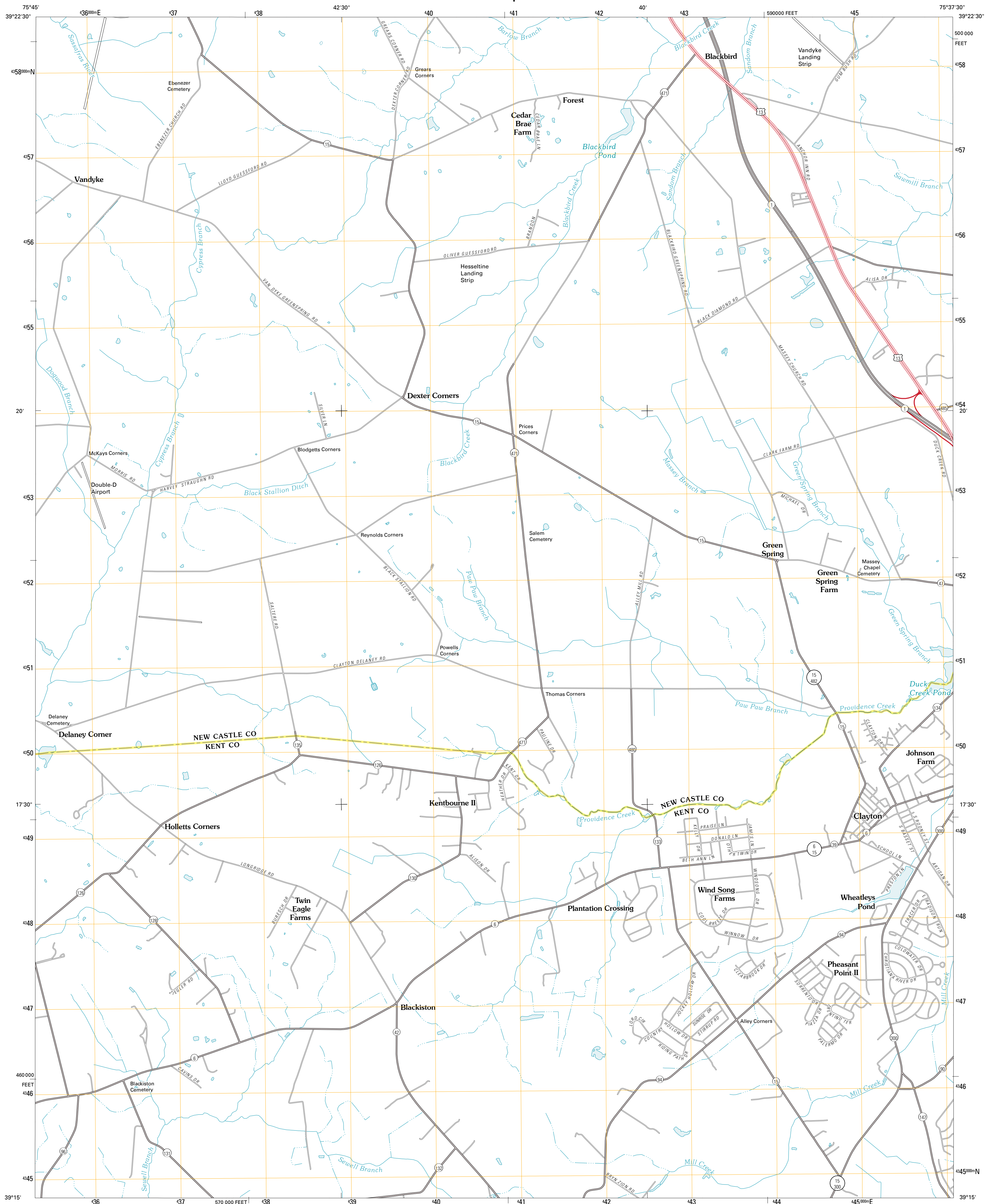




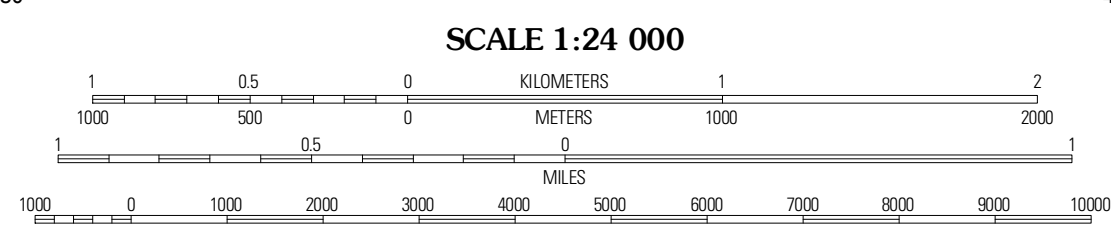
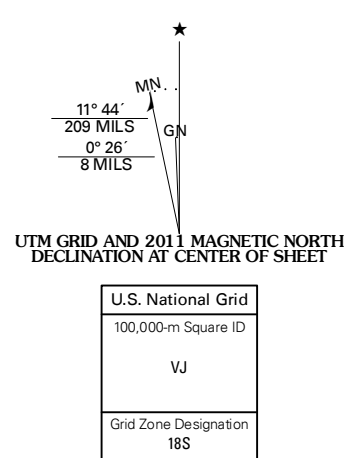
U.S. DEPARTMENT OF THE INTERIOR
U. S. GEOLOGICAL SURVEY



CLAYTON QUADRANGLE
DELAWARE
7.5-MINUTE SERIES

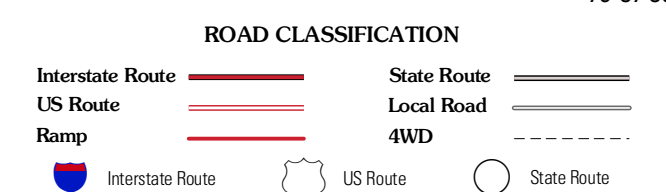


Produced by the United States Geological Survey
North American Datum of 1983 (NAD83)
World Geodetic System of 1984 (WGS84). Projection and
1 000-meter grid: Universal Transverse Mercator, Zone 18S
10 000-foot ticks: Delaware Coordinate System of 1983



CONTOURS NOT PRESENT BECAUSE AVAILABLE ELEVATION
DATA DO NOT MEET ACCURACY REQUIREMENTS

This map was produced to conform with version 0.5.10
of the USGS US Topo Product Standard.
A metadata file associated with this product is draft version 0.5.15.DE



QUADRANGLE LOCATION

Cecilton	Middletown	Taylors Bridge
Millington	Clayton	Smyrna
Sudlersville	Kenton	Dover

ADJOINING 7.5' QUADRANGLES

CLAYTON, DE
2011