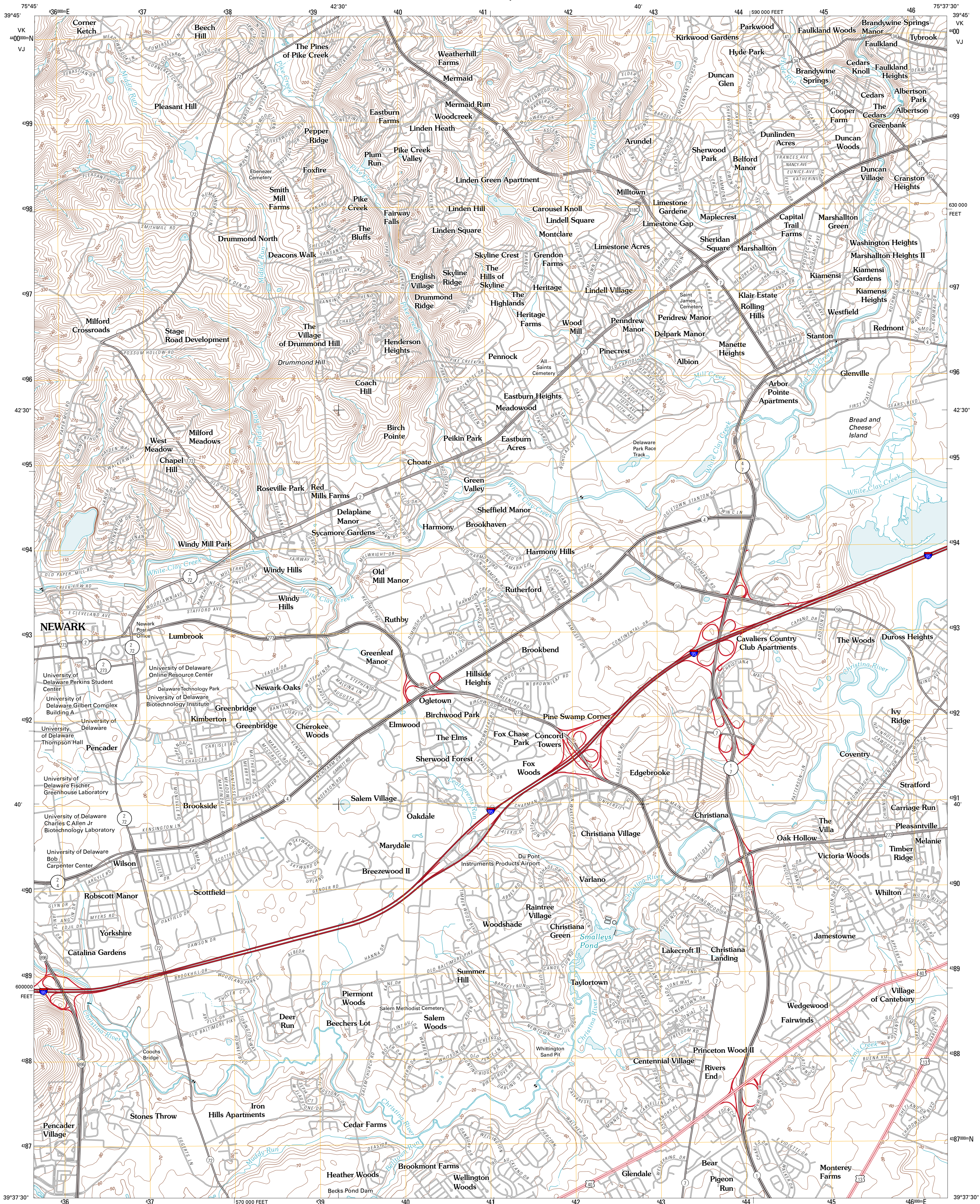




U.S. DEPARTMENT OF THE INTERIOR
U. S. GEOLOGICAL SURVEY



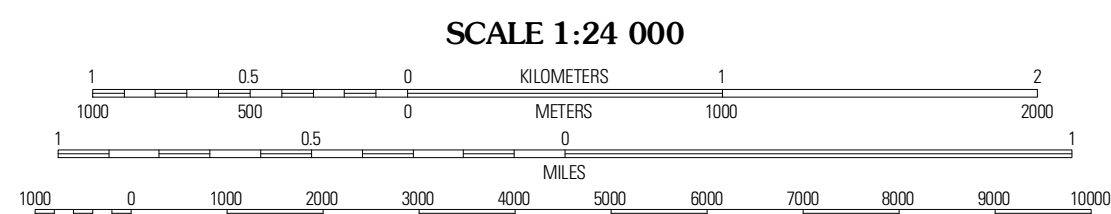
NEWARK EAST QUADRANGLE
DELAWARE-NEW CASTLE CO.
7.5-MINUTE SERIES



Produced by the United States Geological Survey
North American Datum of 1983 (NAD83)
World Geodetic System of 1984 (WGS84). Projection and
1 000-meter grid: Universal Transverse Mercator, Zone 18S
10 000-foot ticks: Delaware Coordinate System of 1983

UTM GRID AND 2011 MAGNETIC NORTH
DECLINATION AT CENTER OF SHEET

| |
|-----------------------|
| U.S. National Grid |
| 100,000m Square ID |
| VK |
| VJ |
| Grid Zone Designation |
| 18S |



CONTOUR INTERVAL 10 FEET
NORTH AMERICAN VERTICAL DATUM OF 1988
This map was produced to conform with version 0.5.10
of the USGS US Topo Product Standard.
A metadata file associated with this product is draft version 0.5.15.DE



ROAD CLASSIFICATION

| | |
|------------------|-------------|
| Interstate Route | State Route |
| US Route | Local Road |
| Ramp | 4WD |

Interstate Route
US Route
State Route

| QUADRANGLE LOCATION | | |
|---------------------|-------------------|---------------------|
| West Groove | Kennett Square | Wilmington North |
| Newark West | Newark East | Wilmington South |
| Elton | Saint Georges | Delaware City |

NEWARK EAST, DE
2011