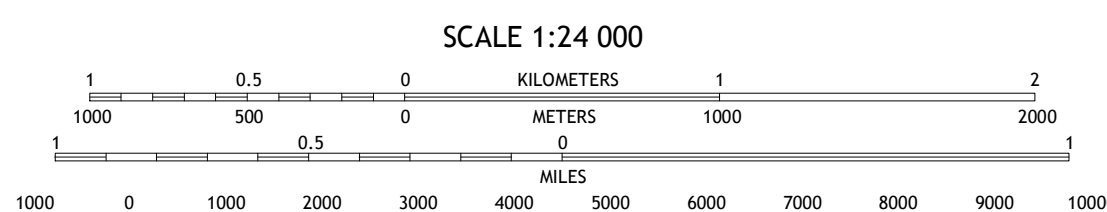
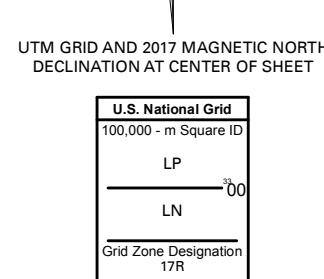
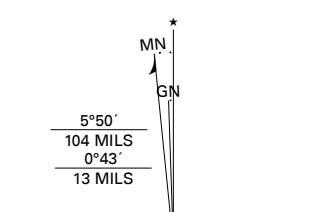


Produced by the United States Geological Survey

North American Datum of 1983 (NAD83) World Geodetic System of 1984 (WGS84) Projection and 1 000-meter grid/Universal Transverse Mercator, Zone 17R. This map is not a legal document. Boundaries may be generalized for this map scale. Private lands within government reservations may not be shown. Obtain permission before entering private lands.

Imagery.....NAIP, October 2015 - January 2016  
Roads.....U.S. Census Bureau, 2016  
Names.....GNIS, 1979 - 2018  
Hydrography.....National Hydrography Dataset, 2003 - 2018  
Contours.....National Elevation Dataset, 2012 - 2018  
Boundaries.....Multiple sources; see metadata file, 2014 - 2016  
Public Land Survey System.....BLM, 2017  
Wetlands.....FWS National Wetlands Inventory 1983 - 1984



CONTOUR INTERVAL 10 FEET NORTH AMERICAN VERTICAL DATUM OF 1988  
This map was produced to conform with the National Geospatial Program US Topo Product Standard, 2011. A metadata file associated with this product is draft version 0.6.18



ADJOINING QUADRANGLES

1	2	3
4	5	6
7	8	9

1 Mikesville  
2 Worthington Springs  
3 Brookler  
4 High Springs  
5 Monticello  
6 Newberry  
7 Gainesville West  
8 Gainesville East

