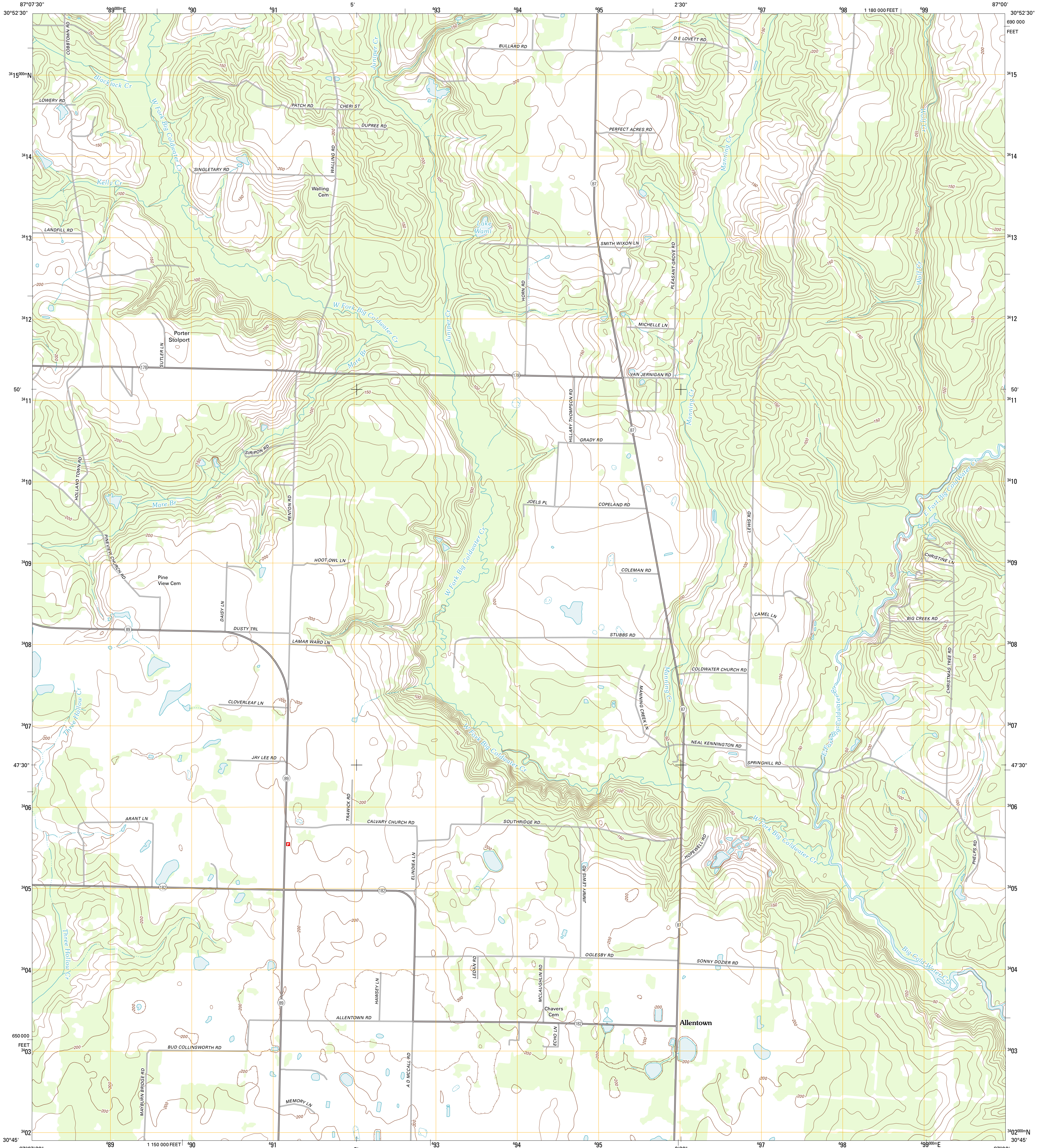




U.S. DEPARTMENT OF THE INTERIOR  
U. S. GEOLOGICAL SURVEY



ALLENTOWN QUADRANGLE  
FLORIDA-SANTA ROSA CO.  
7.5-MINUTE SERIES



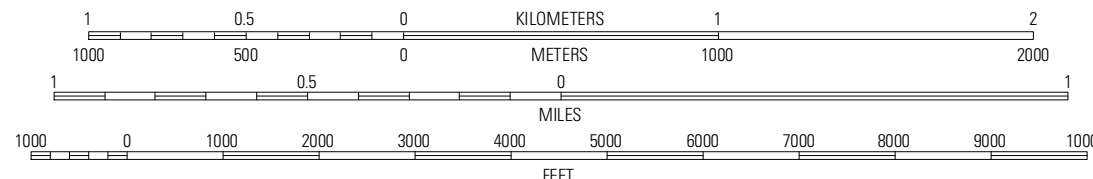
Produced by the United States Geological Survey  
North American Datum of 1983 (NAD83)  
World Geodetic System of 1984 (WGS84). Projection and  
1 000-meter grid: Universal Transverse Mercator, Zone 16R  
10 000-foot ticks: Florida Coordinate System of 1983 (north  
zone)

Imagery: N.A.I.P., September 2010  
Roads: ©2006-2011 TomTom  
Names: GNS, 2011  
Hydrography: National Hydrography Dataset, 2010  
Contours: National Elevation Dataset, 2009  
Boundaries: Census, IBWC, IBC, USGS, 1972-2010

UTM GRID AND 2012 MAGNETIC NORTH  
DECLINATION AT CENTER OF SHEET

U.S. National Grid	100,000-m Square ID
DV	
Grid Zone Designation	16R

SCALE 1:24 000



CONTOUR INTERVAL 10 FEET  
NORTH AMERICAN VERTICAL DATUM OF 1988

This map was produced to conform with the  
National Geospatial Program US Topo Product Standard, 2011.  
A metadata file associated with this product is draft version 0.6.3



QUADRANGLE LOCATION

Jay	Fidels	McLellan
Chumuckla	Allentown	Spring Hill
Wallace	Milton North	Harold

ROAD CLASSIFICATION

Interstate Route	State Route
US Route	Local Road
Ramp	4WD

ALLENTOWN, FL  
2012

ADJOINING 7.5' QUADRANGLES