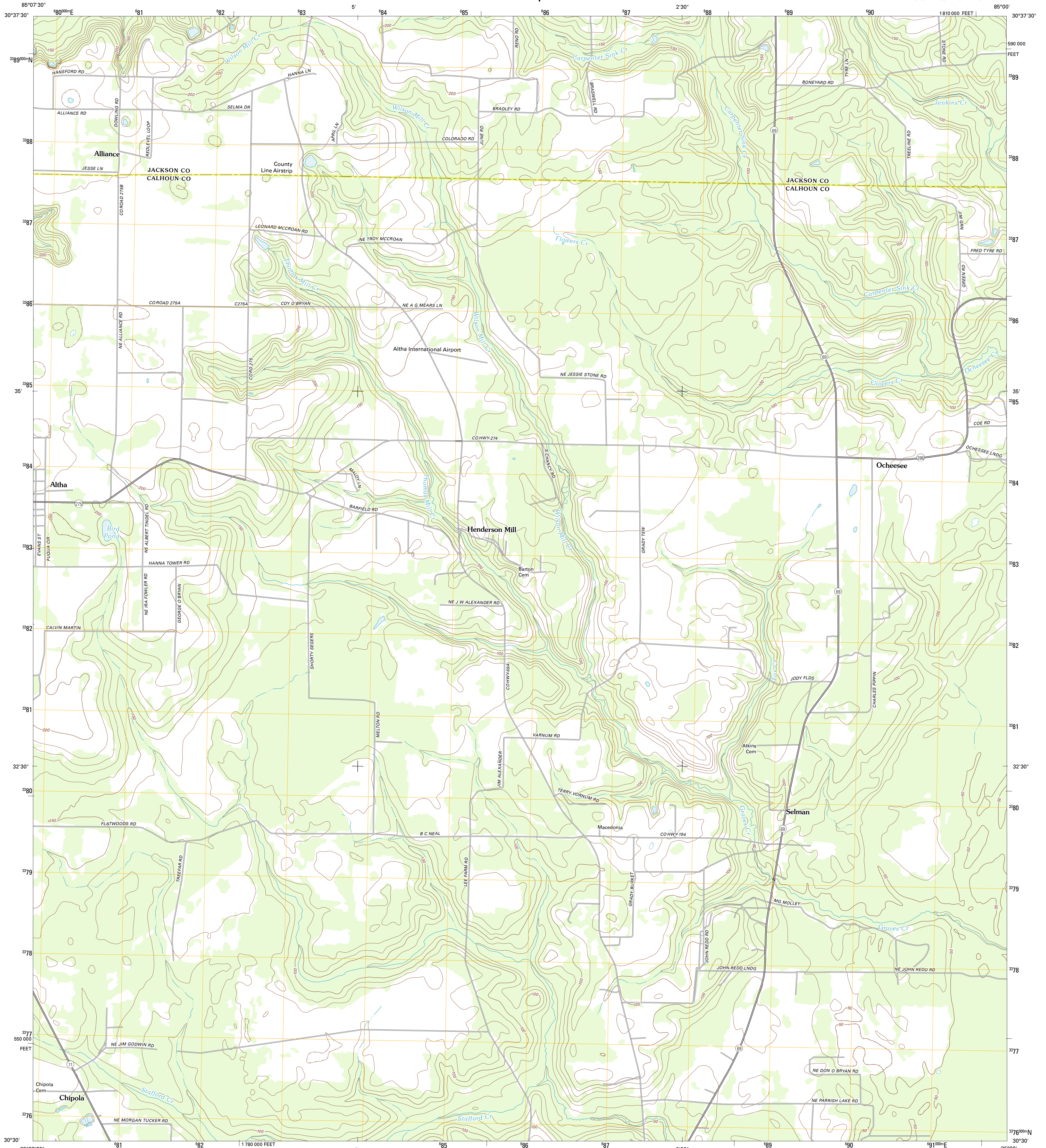




U.S. DEPARTMENT OF THE INTERIOR  
U. S. GEOLOGICAL SURVEY

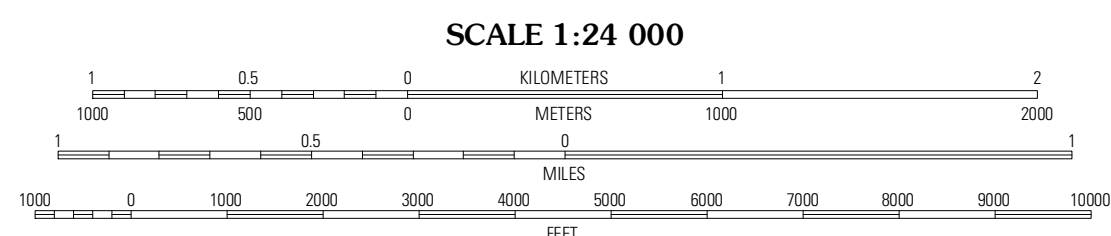
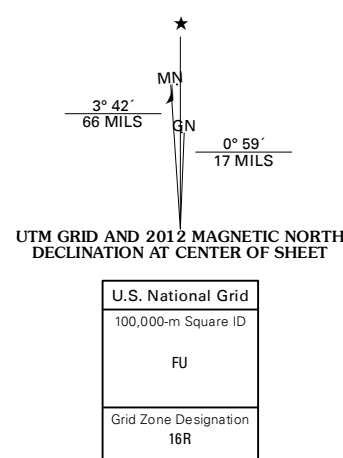


ALPHA EAST QUADRANGLE  
FLORIDA  
7.5-MINUTE SERIES



Produced by the United States Geological Survey  
North American Datum of 1983 (NAD83)  
World Geodetic System of 1984 (WGS84) Projection and  
1 000-meter grid; Universal Transverse Mercator, Zone 16R  
10 000-foot ticks; Florida Coordinate System of 1983 (north  
zone)

Image(s).....NAIP, September 2010  
Roads.....©2006-2011 TomTom  
Names.....GNIS, 2011  
Hydrography.....National Hydrography Dataset, 2010  
Contours.....National Elevation Dataset, 2009  
Boundaries.....Census, IBWC, IBC, USGS, 1972 - 2010



SCALE 1:24 000  
CONTOUR INTERVAL 10 FEET  
NORTH AMERICAN VERTICAL DATUM OF 1988  
This map was produced to conform with the  
National Geospatial Program US Topo Product Standard, 2011.  
A metadata file associated with this product is draft version 0.6.3



QUADRANGLE LOCATION

Oakdale	Cypress	Sneads
Altha West	<b>Altha East</b>	Rock Bluff
Chickville	Blountstown	Britton

ADJOINING 7.5' QUADRANGLES

ROAD CLASSIFICATION

Interstate Route	State Route
US Route	Local Road
Ramp	4WD

ALPHA EAST, FL  
2012