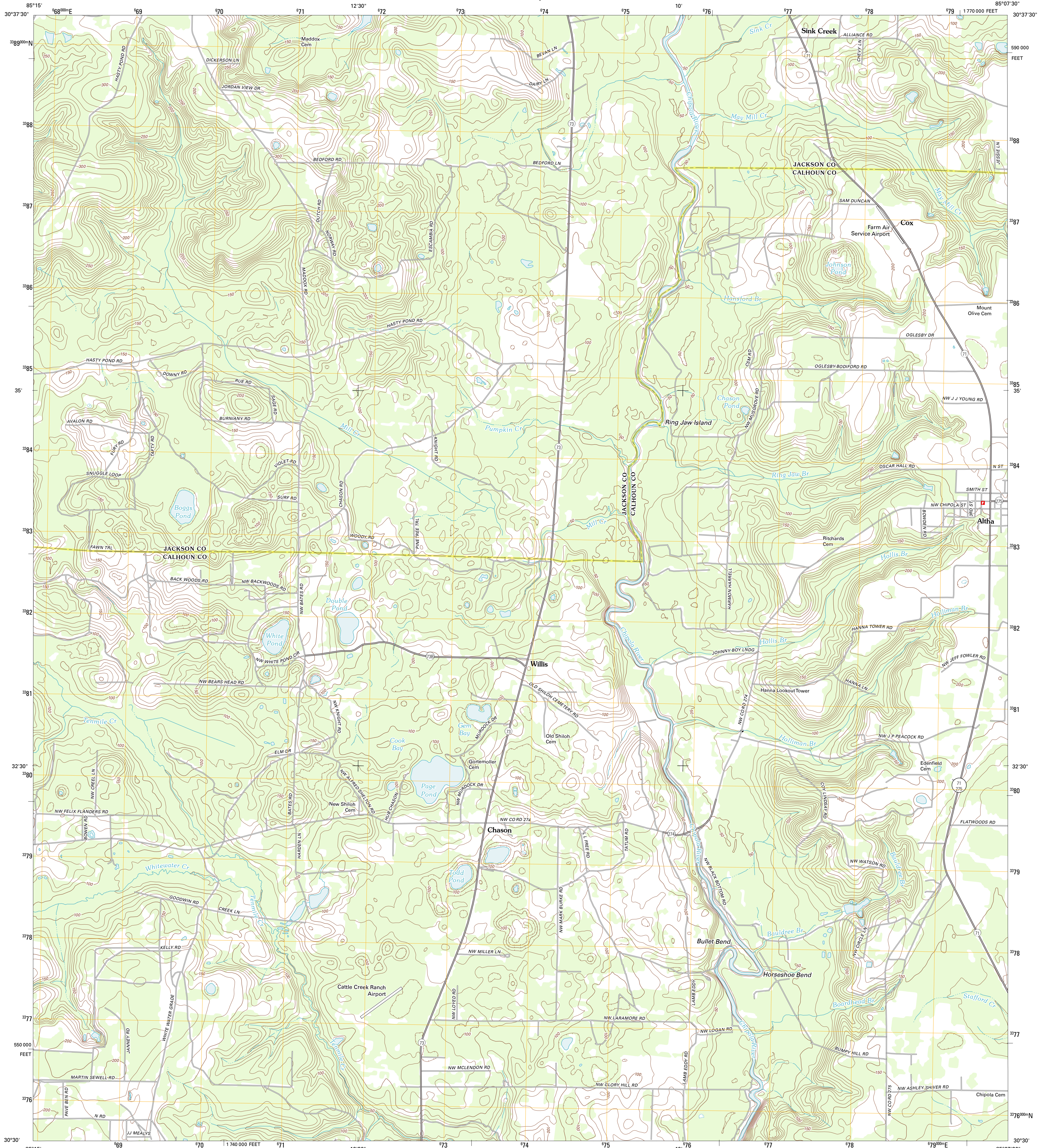




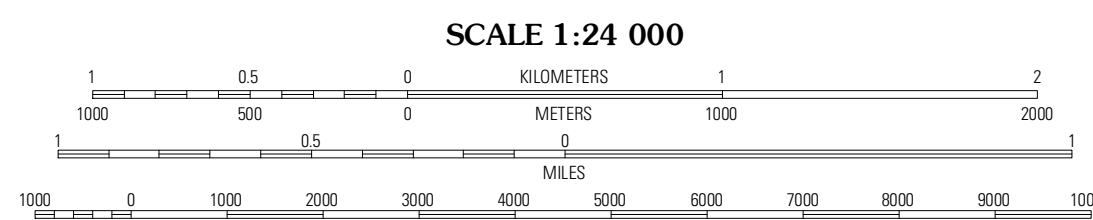
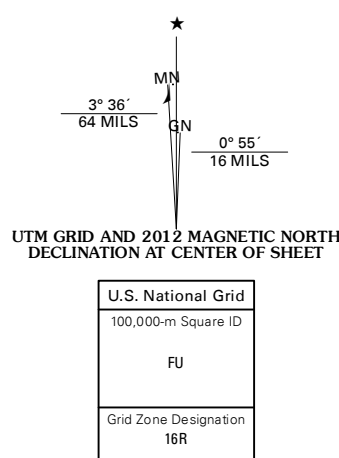
U.S. DEPARTMENT OF THE INTERIOR
U. S. GEOLOGICAL SURVEY



ALPHA WEST QUADRANGLE
FLORIDA
7.5-MINUTE SERIES

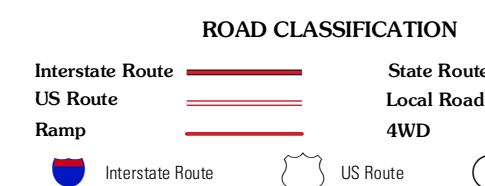


Produced by the United States Geological Survey
North American Datum of 1983 (NAD83)
World Geodetic System of 1984 (WGS84) Projection and
1 000-meter grid; Universal Transverse Mercator, Zone 16R
10 000-foot ticks: Florida Coordinate System of 1983 (north zone)



QUADRANGLE LOCATION

Kynesville	Oakdale	Cypress
Alford SE	Alpha West	Alpha East
Juniper Creek	Clarkville	Bloomstown



CONTOUR INTERVAL 10 FEET
NORTH AMERICAN VERTICAL DATUM OF 1988

This map was produced to conform with the
National Geospatial Program US Topo Product Standard, 2011.
A metadata file associated with this product is draft version 0.6.3

ALPHA WEST, FL
2012

ADJOINING 7.5' QUADRANGLES