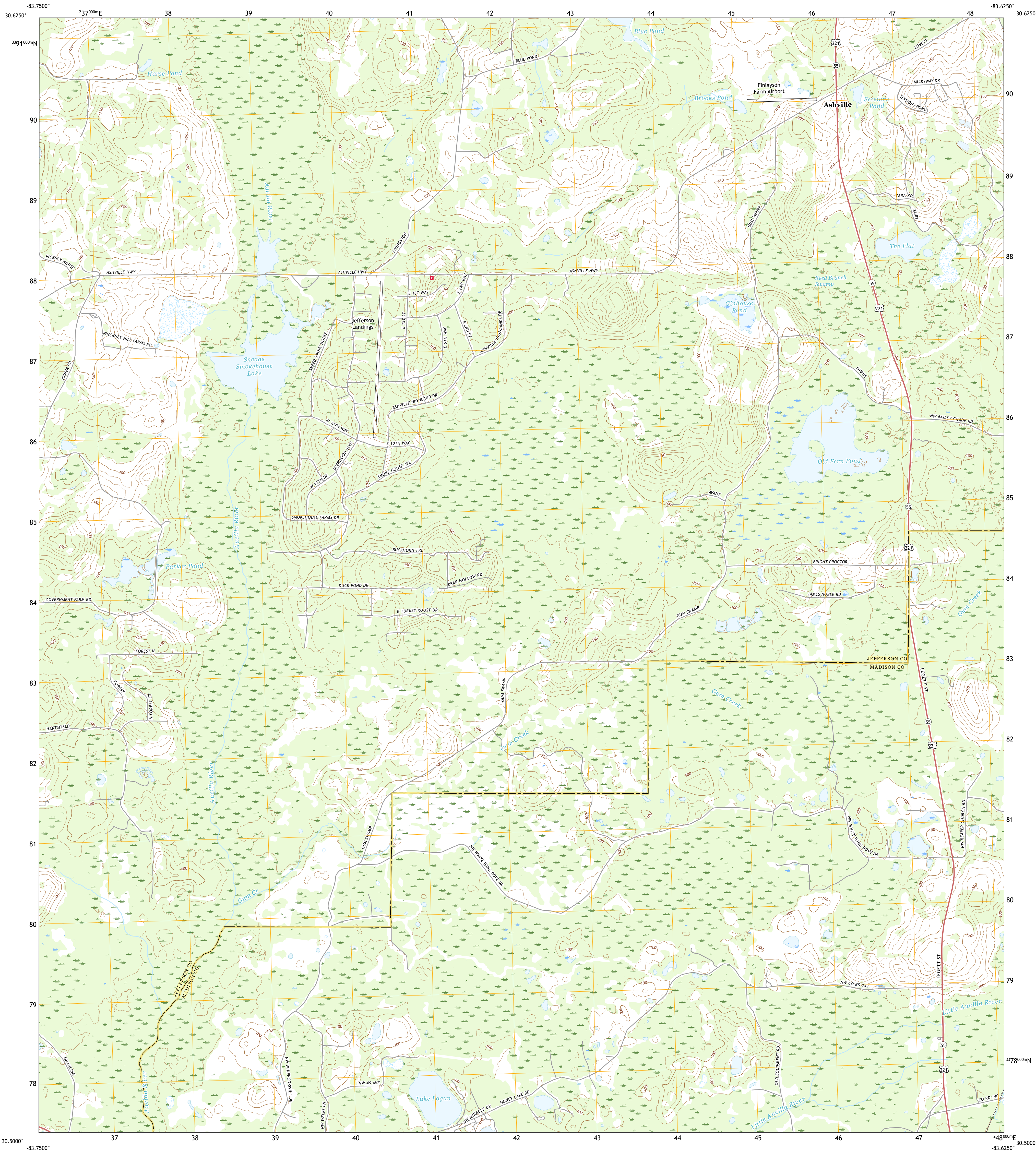




U.S. DEPARTMENT OF THE INTERIOR
U.S. GEOLOGICAL SURVEY

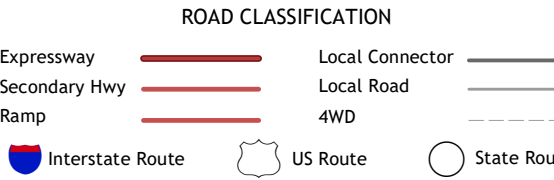
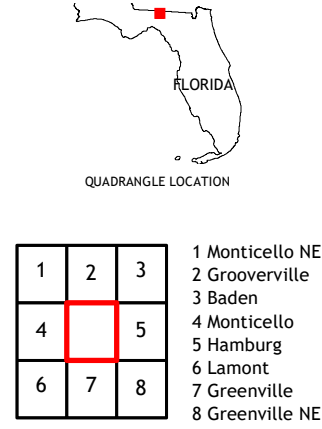
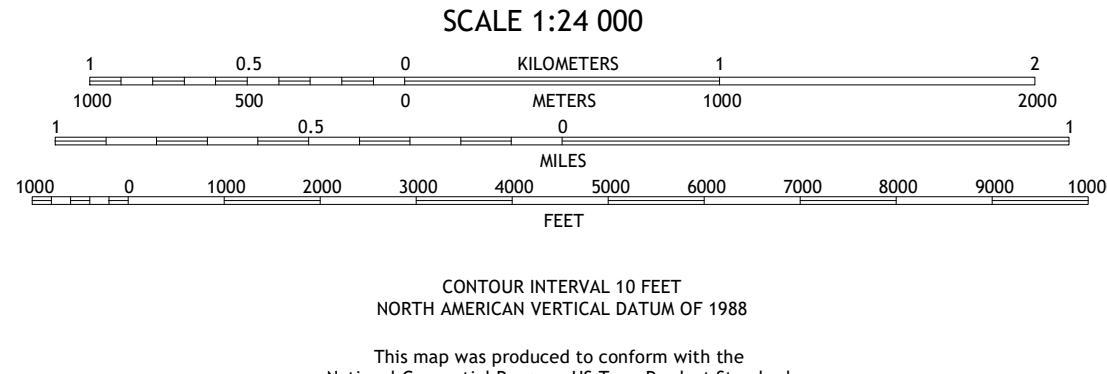
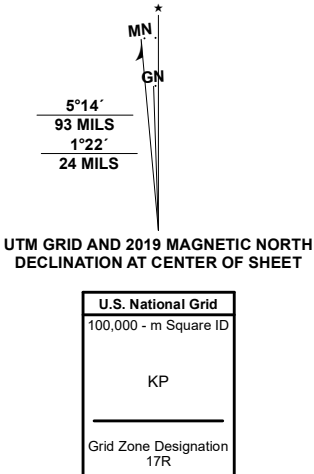


ASHVILLE QUADRANGLE
FLORIDA
7.5-MINUTE SERIES



Produced by the United States Geological Survey
North American Datum of 1983 (NAD83)
World Geodetic System of 1984 (WGS84). Projection and
1 000-meter grid/Universal Transverse Mercator, Zone 17R.
This map is not a legal document. Boundaries may be
generalized for this map scale. Private lands within government
reservations may not be shown. Obtain permission before
entering private lands.

Imagery.....	NAIP, November 2019
Roads.....	U.S. Census Bureau, 2016
Names.....	GNIS, 1979 - 2019
Hydrography.....	National Hydrography Dataset, 2004 - 2019
Contours.....	National Elevation Dataset, 2018 - 2019
Boundaries.....	Multiple sources: see metadata file 2018 - 2019
Public Land Survey System.....	BLM, 2020
Wetlands.....	FWS National Wetlands Inventory 1983 - 1984



ASHVILLE, FL
2021

