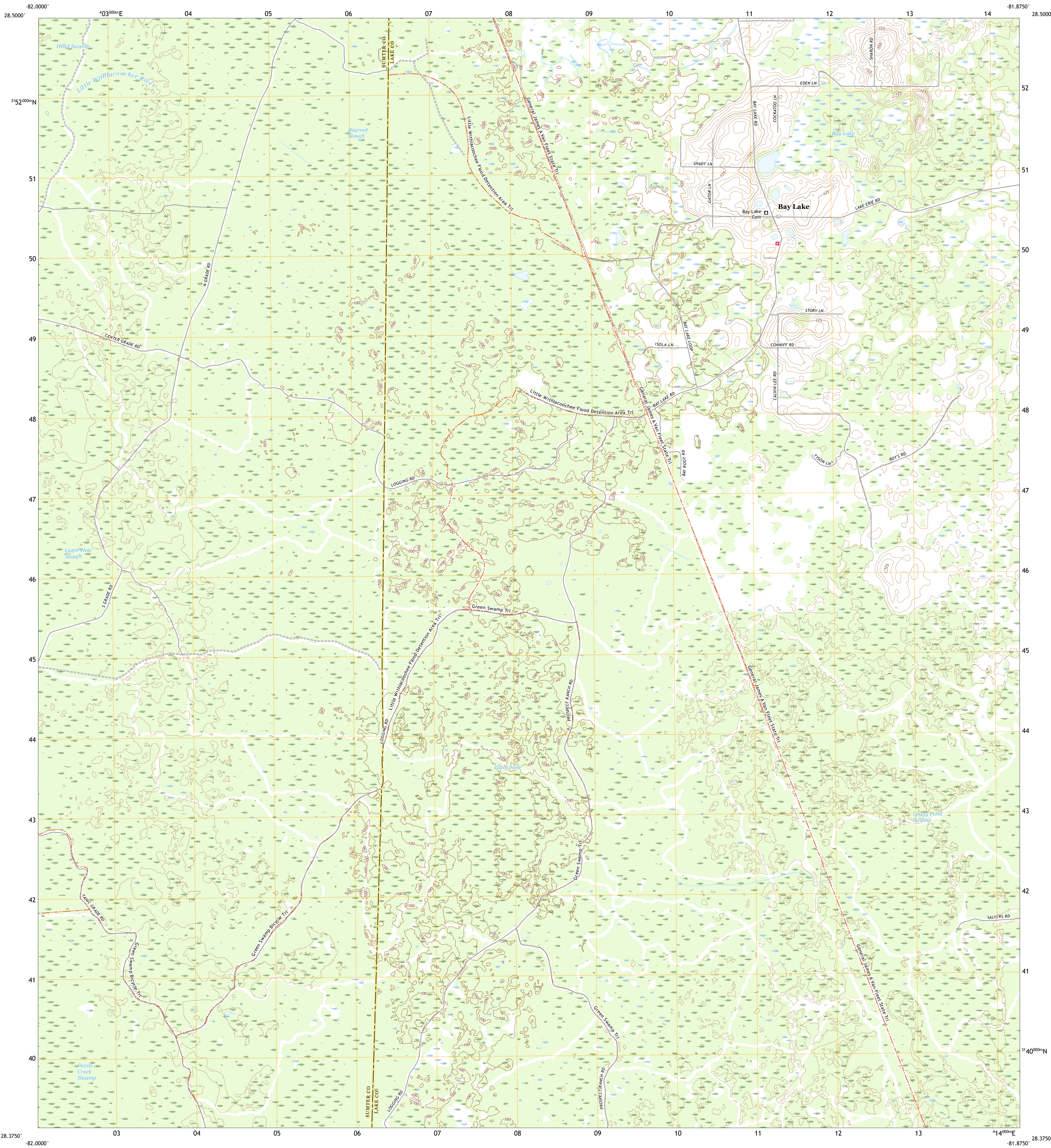




U.S. DEPARTMENT OF THE INTERIOR  
U.S. GEOLOGICAL SURVEY

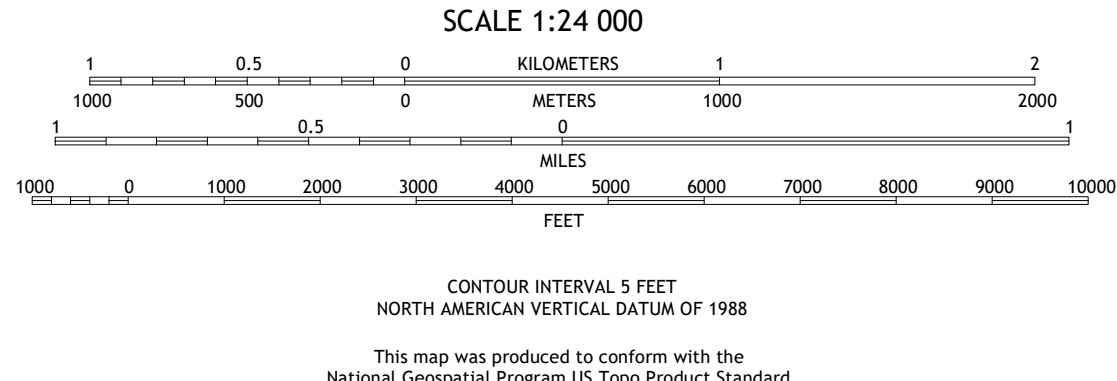
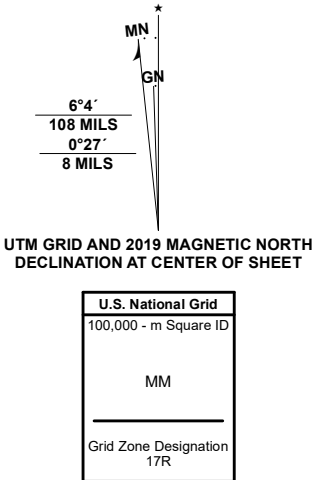


BAY LAKE QUADRANGLE  
FLORIDA  
7.5-MINUTE SERIES



Produced by the United States Geological Survey  
North American Datum of 1983 (NAD83)  
World Geodetic System of 1984 (WGS84). Projection and  
1 000-meter grid/Universal Transverse Mercator, Zone 17R.  
This map is not a legal document. Boundaries may be  
generalized for this map scale. Private lands within government  
reservations may not be shown. Obtain permission before  
entering private lands.

Imagery	.....NAIP	November	2019
Roads	.....U.S. Census Bureau	2016	
Names	.....GNIS	1979	2019
Hydrography	.....National Hydrography Dataset	2003	2019
Contours	.....National Elevation Dataset	2009	2012
Boundaries	.....Multiple sources: see metadata file	2016	2019
Public Land Survey System	.....BLM	2020	
Wetlands	.....FWS National Wetlands Inventory	1984	



1	2	3
4	5	6
7	8	9

ADJOINING QUADRANGLES

- 1 Webster
- 2 Mascotte
- 3 Clermont West
- 4 Clay Sink
- 5 Lake Nellie
- 6 Branchborough
- 7 Rock Ridge
- 8 Poyner

ROAD CLASSIFICATION	
Expressway	Local Connector
Secondary Hwy	Local Road
Ramp	4WD
Interstate Route	US Route
	State Route

BAY LAKE, FL  
2021

