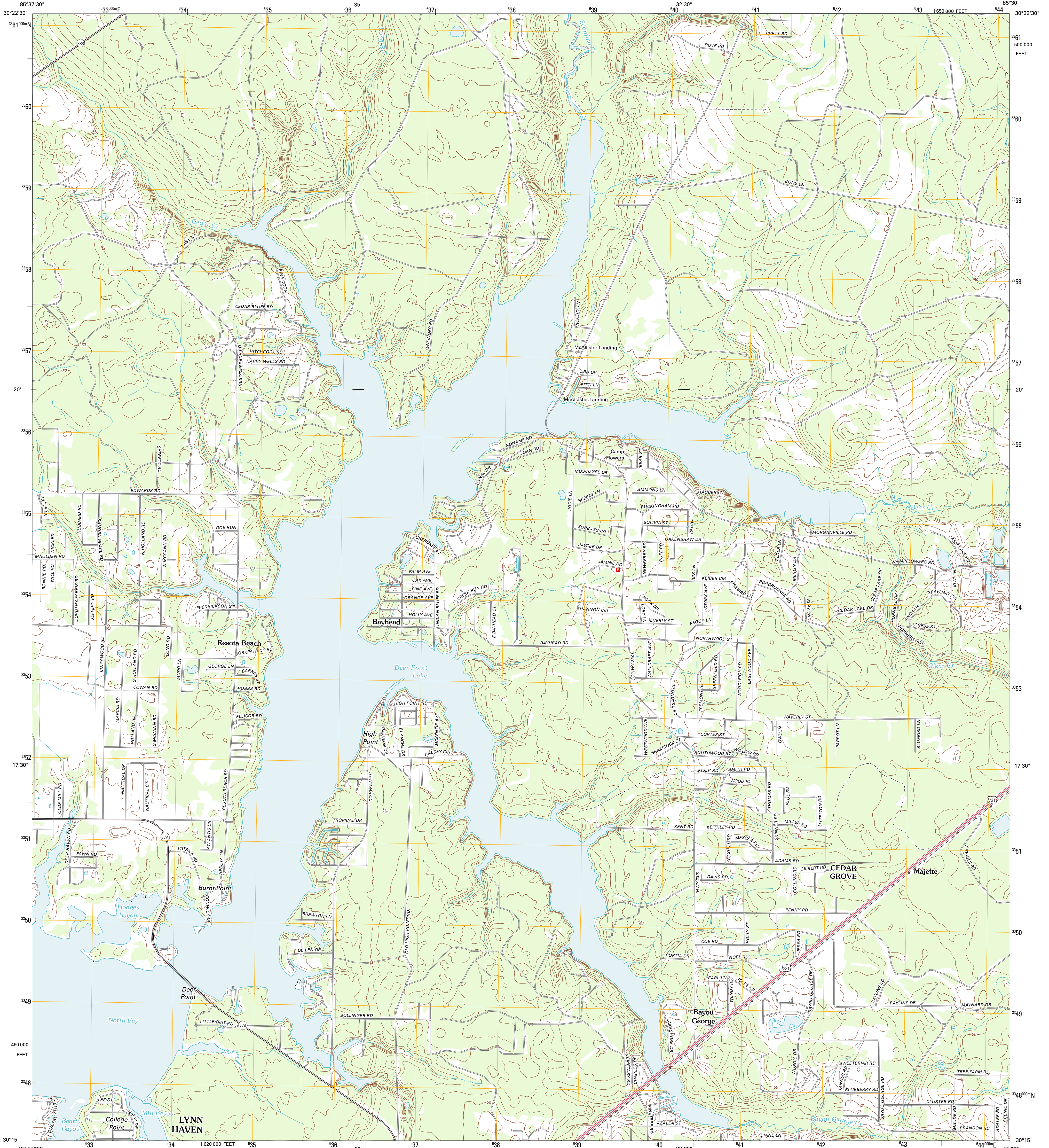




U.S. DEPARTMENT OF THE INTERIOR
U. S. GEOLOGICAL SURVEY

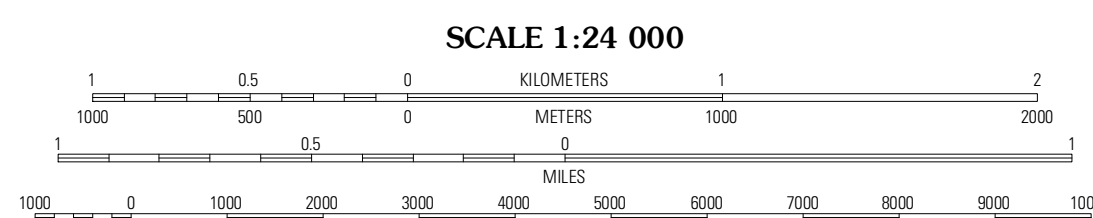
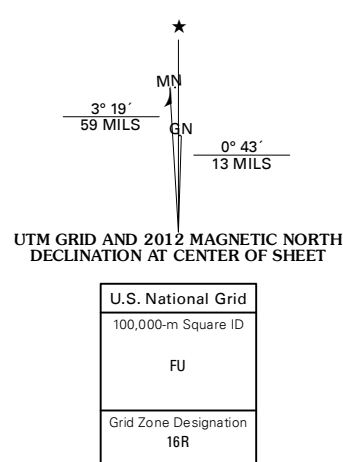


BAYHEAD QUADRANGLE
FLORIDA-BAY CO.
7.5-MINUTE SERIES

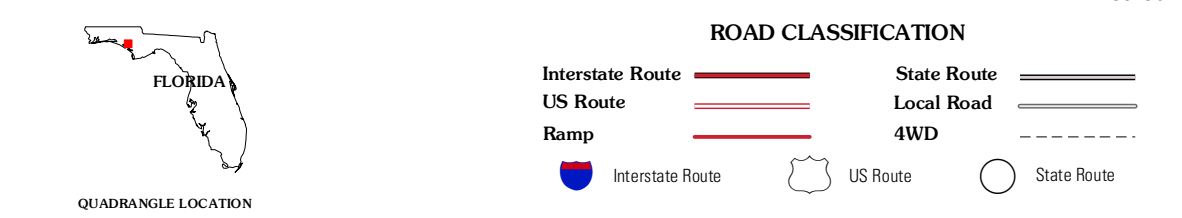


Produced by the United States Geological Survey
North American Datum of 1983 (NAD83)
World Geodetic System of 1984 (WGS84) Projection and
1 000-meter grid; Universal Transverse Mercator, Zone 16R
10 000-foot ticks; Florida Coordinate System of 1983 (north zone)

Imagery.....NAP, September 2010
Roads.....©2006-2011, TomTom
Names.....GNIS, 2011
Hydrography.....National Hydrography Dataset, 2010
Contours.....National Elevation Dataset, 2011
Boundaries.....Census, IBWC, IBC, USGS, 1972 - 2010



CONTOUR INTERVAL 5 FEET
NORTH AMERICAN VERTICAL DATUM OF 1988
This map was produced to conform with the
National Geospatial Program US Topo Product Standard, 2011.
A metadata file associated with this product is draft version 0.6.3



QUADRANGLE LOCATION

Crystal Lake	Bennett	Fountain
Southport	Bayhead	Youngstown
Panama City	Springfield	North of Allenton

BAYHEAD, FL
2012

ADJOINING 7.5 QUADRANGLES