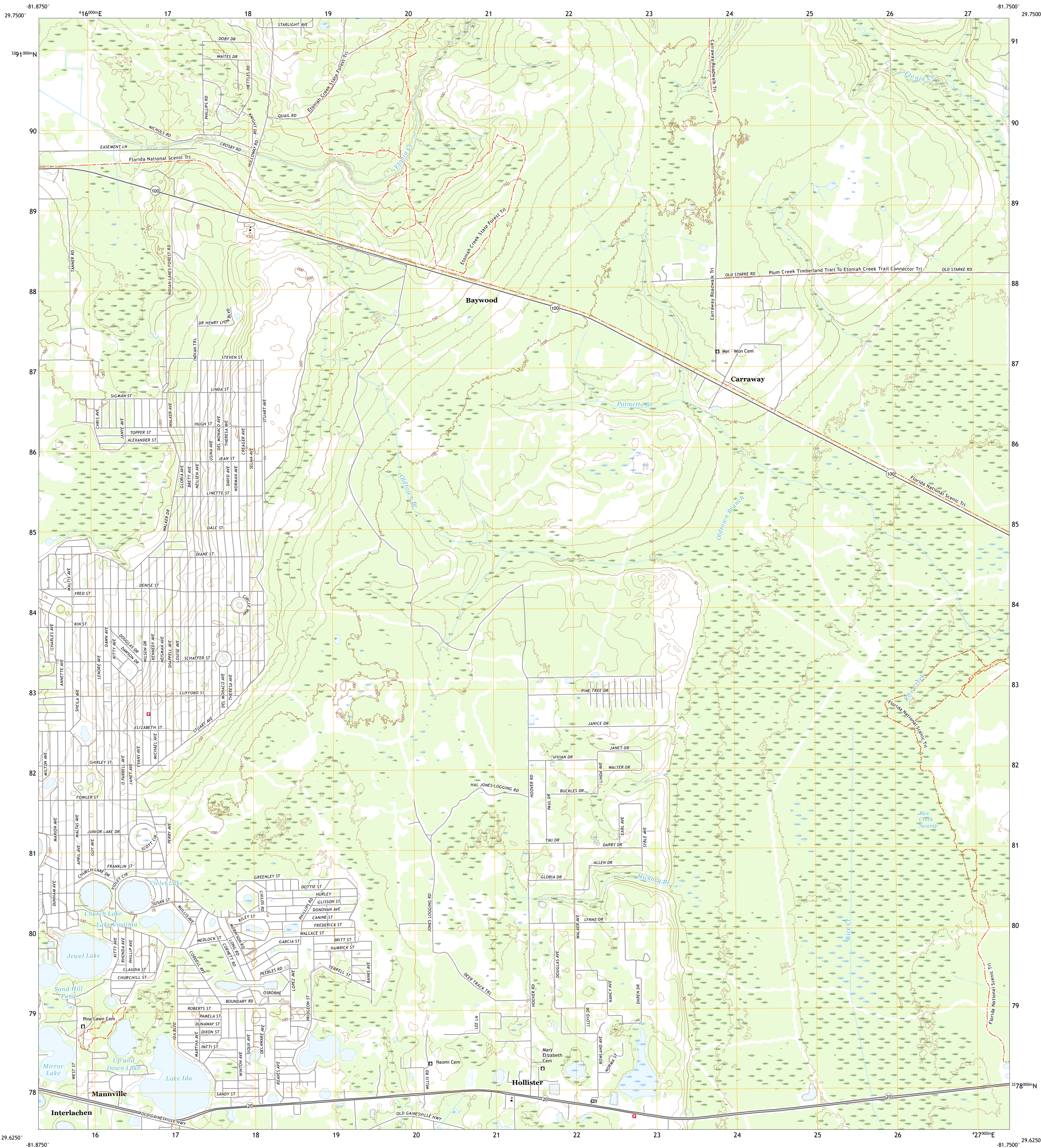




U.S. DEPARTMENT OF THE INTERIOR
U.S. GEOLOGICAL SURVEY



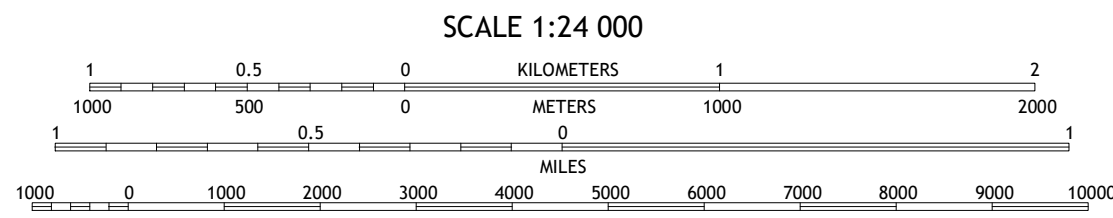
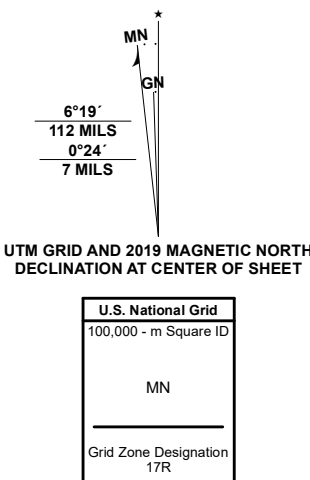
BAYWOOD QUADRANGLE
FLORIDA - PUTNAM COUNTY
7.5-MINUTE SERIES



Produced by the United States Geological Survey

North American Datum of 1983 (NAD83)
World Geodetic System of 1984 (WGS84). Projection and
1 000-meter grid/Universal Transverse Mercator, Zone 17R.
This map is not a legal document. Boundaries may be
generalized for this map scale. Private lands within government
reservations may not be shown. Obtain permission before
entering private lands.

Imagery	U.S. Census Bureau	2019
Roads	GNIS	2020
Names	National Hydrography Dataset	2020
Contours	National Elevation Dataset	2013
Boundaries	see metadata file	2018
Public Land Survey System	BLM	2020
Wetlands	FWS National Wetlands Inventory	1983 - 1985



1	2	3
4	5	6
7	8	9

ADJOINING QUADRANGLES

1 Gold Head Branch
2 Rice Creek
3 Bostwick
4 Putnam Hall
5 Palatka
6 Keuka
7 Rodman
8 Satsuma

ROAD CLASSIFICATION	
Expressway	Local Connector
Secondary Hwy	Local Road
Ramp	4WD
Interstate Route	US Route
	State Route

BAYWOOD, FL
2021

