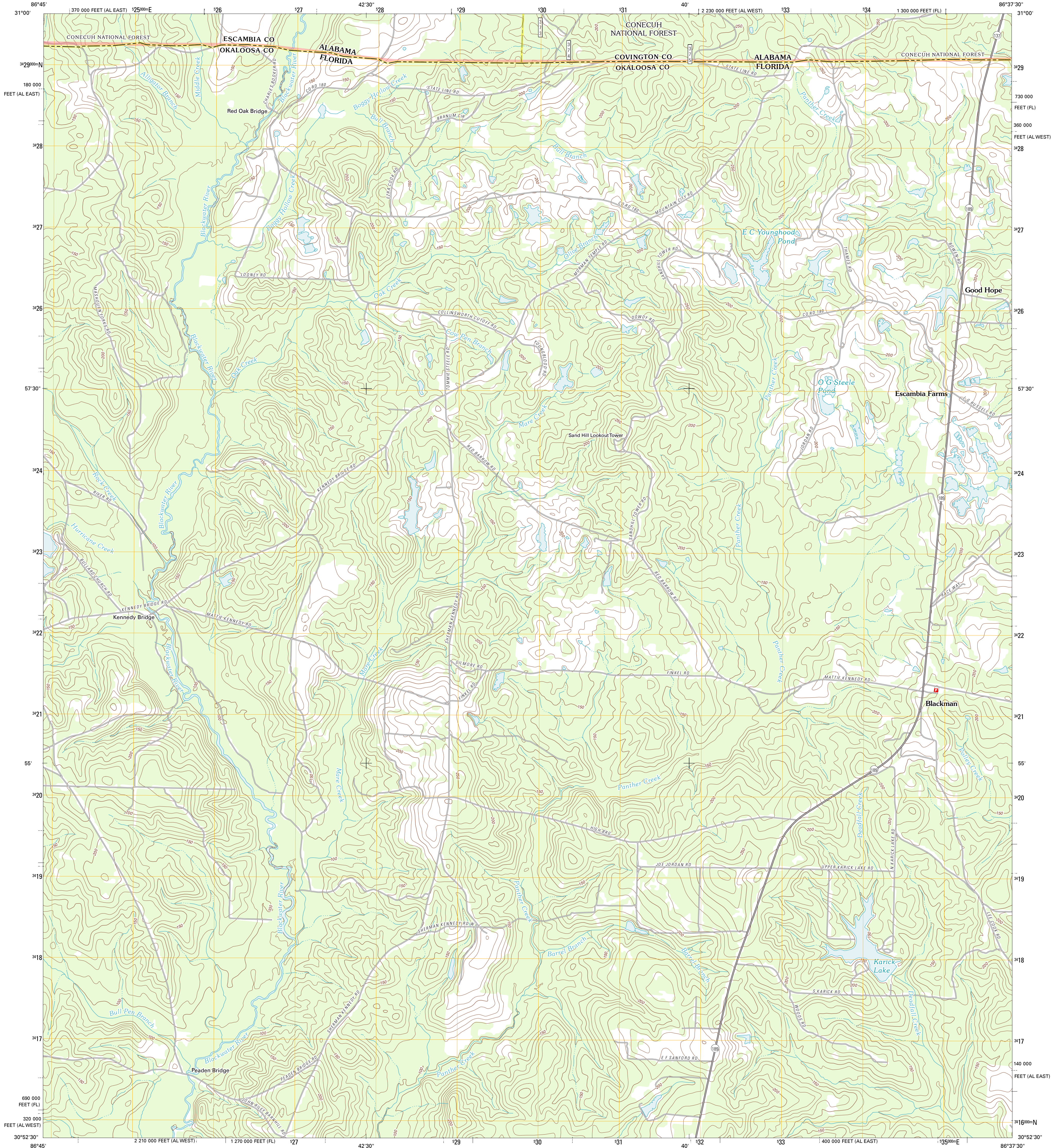




U.S. DEPARTMENT OF THE INTERIOR
U. S. GEOLOGICAL SURVEY



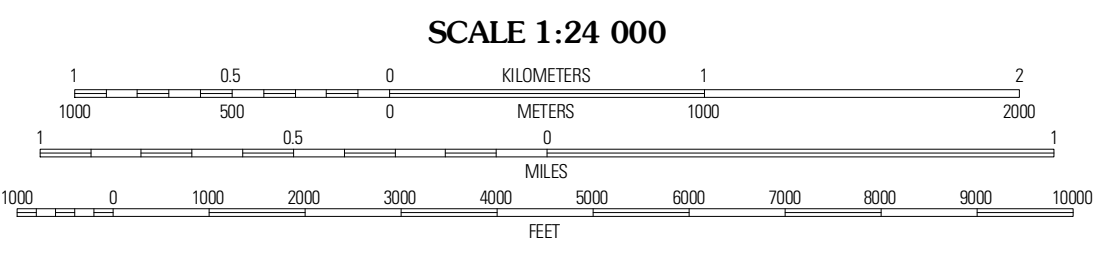
BLACKMAN QUADRANGLE
FLORIDA-ALABAMA
7.5-MINUTE SERIES



Produced by the United States Geological Survey
North American Datum of 1983 (NAD83)
World Geodetic System of 1984 (WGS84) Projection and
10 000-foot ticks: Florida Coordinate System of 1983 (north
zone), Alabama Coordinate System of 1983 (east and west
zones)

UTM GRID AND 2011 MAGNETIC NORTH
DECLINATION AT CENTER OF SHEET

U.S. National Grid	100,000-m Square ID
EV	
Grid Zone Designation	18R



ROAD CLASSIFICATION

Interstate Route	State Route
US Route	Local Road
Ramp	4WD

Interstate Route
 US Route
 FS Primary Route
 State Route
 FS Passenger Route
 FS High Clearance Route

Check with local Forest Service unit
for current travel conditions and restrictions.

Imagery: NAD, September 2007
Roads: 2010-2011 TomTom
Roads within US Forest Service Lands: FSTopo Data
with limited Forest Service updates, 2009
Names: GNIS, 2011
Hydrography: National Hydrography Dataset, 2007
Contours: National Elevation Dataset, 2009
Boundaries: Census, IBWC, IBC, USGS, 1972 - 2010

CONTOUR INTERVAL 10 FEET
NORTH AMERICAN VERTICAL DATUM OF 1988

This map was produced to conform with the
National Geospatial Program US Topo Product Standard, 2011.
A metadata file associated with this product is draft version 0.6.0

QUADRANGLE LOCATION

Parker Springs	Brodley	Wing
Hurricane Lake	Blackman	Oak Grove
Manson	Baker	Crestview North

ADJOINING 7.5 QUADRANGLES

BLACKMAN, FL-AL
2011