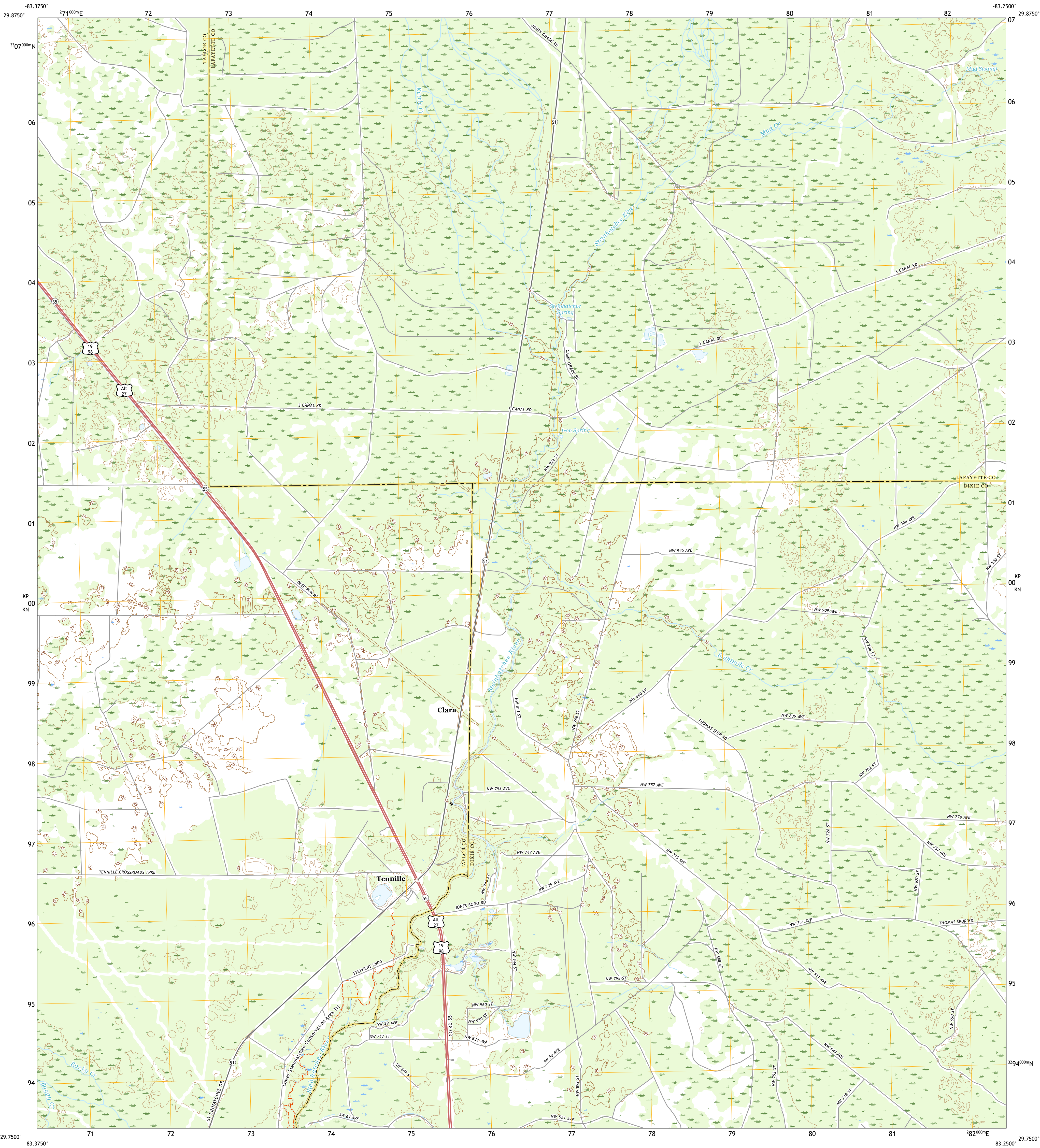




U.S. DEPARTMENT OF THE INTERIOR
U.S. GEOLOGICAL SURVEY



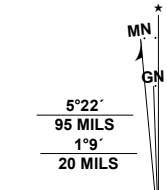
CLARA QUADRANGLE
FLORIDA
7.5-MINUTE SERIES



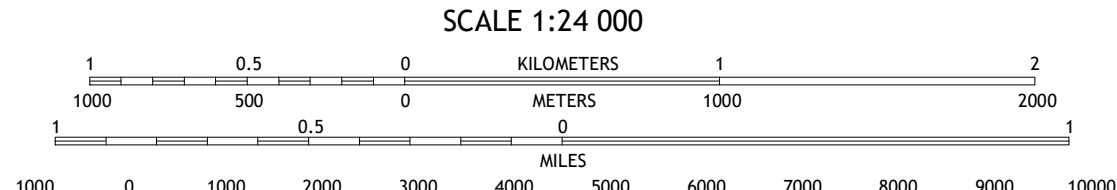
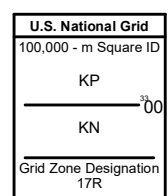
Produced by the United States Geological Survey

North American Datum of 1983 (NAD83)
World Geodetic System of 1984 (WGS84) Projection and
1 000-meter grid/Universal Transverse Mercator, Zone 17R
This map is not a legal document. Boundaries may be
generalized for this map scale. Private lands within government
reservations may not be shown. Obtain permission before
entering private lands.

ImageryNAIP	November	2019
RoadsU.S. Census Bureau	2016	
NamesGNIS	1979	2019
HydrographyNational Hydrography Dataset	2003	
ContoursNational Elevation Dataset	2012	
BoundariesMultiple sources: see metadata file	2018	2019
Public Land Survey SystemBLM	2020	
WetlandsFWS National Wetlands Inventory	1983	2015



UTM GRID AND 2019 MAGNETIC NORTH
DECLINATION AT CENTER OF SHEET



CONTOUR INTERVAL 5 FEET
NORTH AMERICAN VERTICAL DATUM OF 1988
This map was produced to conform with the
National Geospatial Program US Topo Product Standard.



1	2	3
4	5	6
7	8	

- 1 Salem
- 2 Cooks Hammock
- 3 Mallory Swamp NW
- 4 Salem SW
- 5 Mallory Swamp SW
- 6 Steinhatchee
- 7 Jena
- 8 Cross City West

ROAD CLASSIFICATION	
Expressway	Local Connector
Secondary Hwy	Local Road
Ramp	4WD
Interstate Route	US Route
	State Route

CLARA, FL
2021

