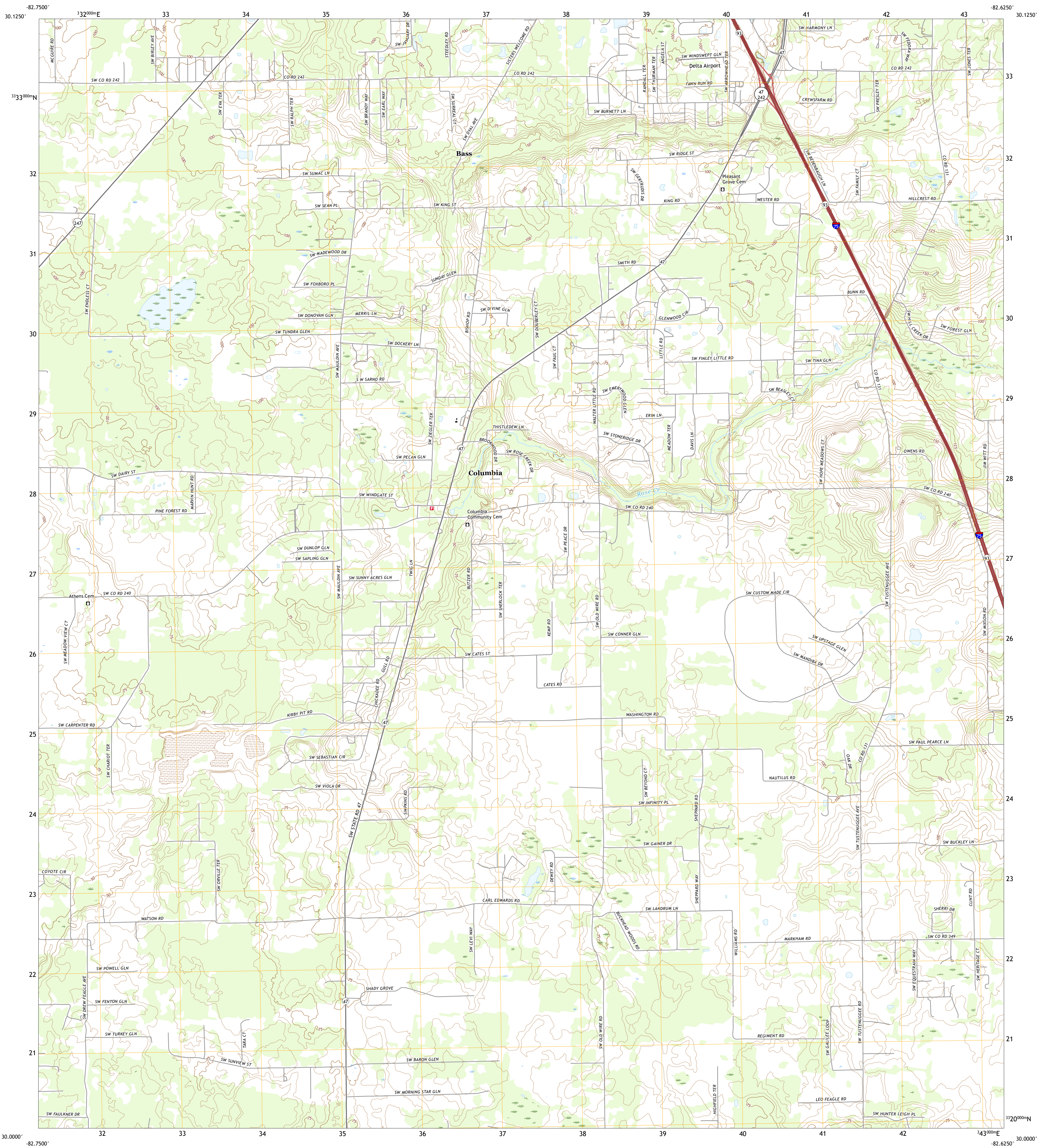




U.S. DEPARTMENT OF THE INTERIOR
U.S. GEOLOGICAL SURVEY

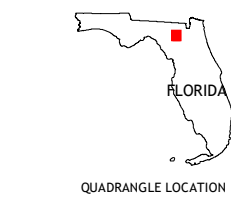
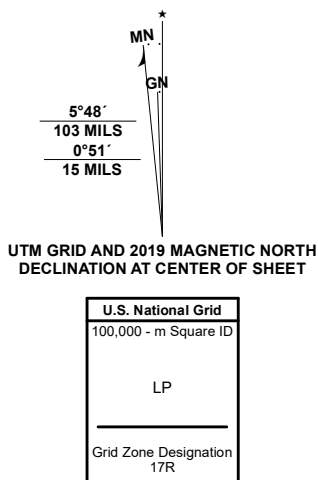


COLUMBIA QUADRANGLE
FLORIDA - COLUMBIA COUNTY
7.5-MINUTE SERIES



Produced by the United States Geological Survey
North American Datum of 1983 (NAD83)
World Geodetic System of 1984 (WGS84). Projection and
1 100-meter grid/Universal Transverse Mercator, Zone 17R.
This map is not a legal document. Boundaries may be
generalized for this map scale. Private lands within government
reservations may not be shown. Obtain permission before
entering private lands.

ImageryNAIP	November	2019
RoadsU.S. Census Bureau	2016	
NamesGNIS	1979	2019
HydrographyNational Hydrography Dataset	1899	2020
ContoursNational Elevation Dataset	2012	2014
BoundariesMultiple sources: see metadata file	2018	2019
Public Land Survey SystemBLM	2020	
WetlandsFWS National Wetlands Inventory	1983	



1	2	3
4	5	6
7	8	

ADJOINING QUADRANGLES

- 1 Wellborn
- 2 Lake City West
- 3 Lake City East
- 4 O'Brien SE
- 5 Ellisville
- 6 Hildreth
- 7 Fort White
- 8 Milesville

ROAD CLASSIFICATION	
Expressway	Local Connector
Secondary Hwy	Local Road
Ramp	4WD
Interstate Route	US Route
	State Route

COLUMBIA, FL
2021

