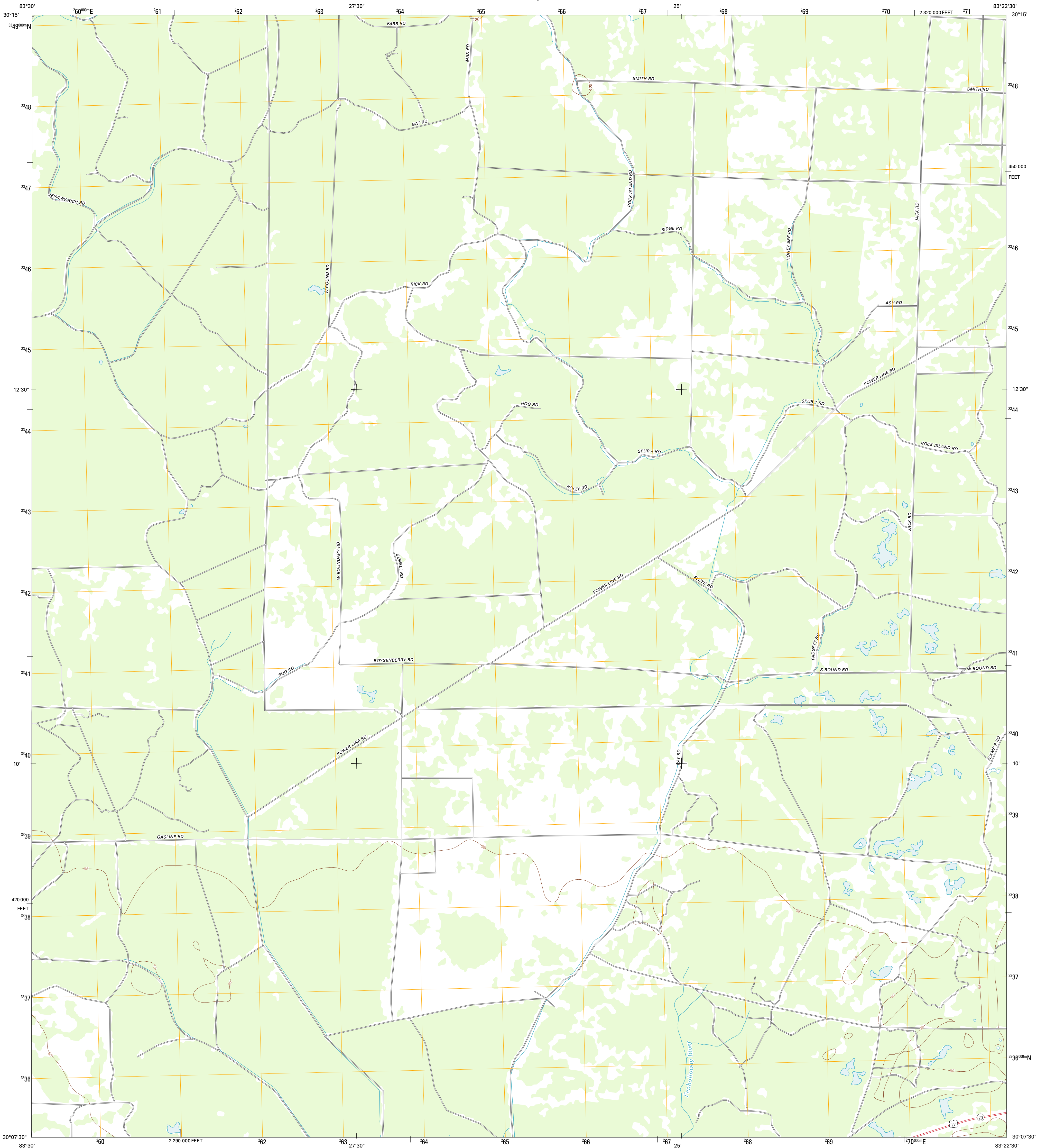




U.S. DEPARTMENT OF THE INTERIOR
U. S. GEOLOGICAL SURVEY

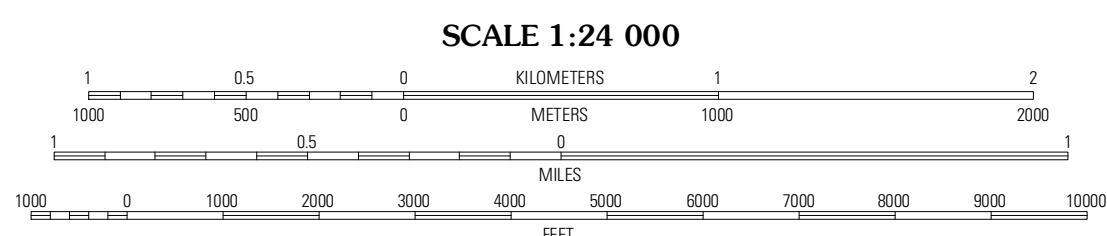
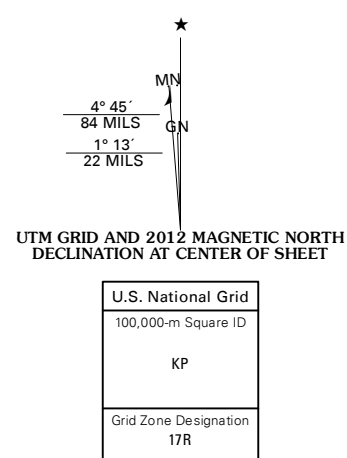


DAY NW QUADRANGLE
FLORIDA-TAYLOR CO.
7.5-MINUTE SERIES



Produced by the United States Geological Survey
North American Datum of 1983 (NAD83)
World Geodetic System of 1984 (WGS84). Projection and
1 000-meter grid: Universal Transverse Mercator, Zone 17R
10 000-foot ticks: Florida Coordinate System of 1983 (north
zone)

Imagery.....NAIP, June 2010 - July 2010
Roads.....2010-2011 TomTom
Names.....GNIS, 2011
Hydrography.....National Hydrography Dataset, 2010
Contours.....National Elevation Dataset, 2012
Boundaries.....Census, IBWC, IBC, USGS, 1972 - 2010



SCALE 1:24 000
CONTOUR INTERVAL 10 FEET
NORTH AMERICAN VERTICAL DATUM OF 1988
This map was produced to conform with the
National Geospatial Program US Topo Product Standard, 2011.
A metadata file associated with this product is draft version 0.6.3



QUADRANGLE LOCATION

Greenville SE	Madison SW	Madison SE
Boyd	Day NW	Day
Perry	Fenhollovey	Day SE

ROAD CLASSIFICATION

Interstate Route

US Route

Ramp

State Route

Local Road

4WD

US Route

State Route

DAY NW, FL
2012

ADJOINING 7.5' QUADRANGLES