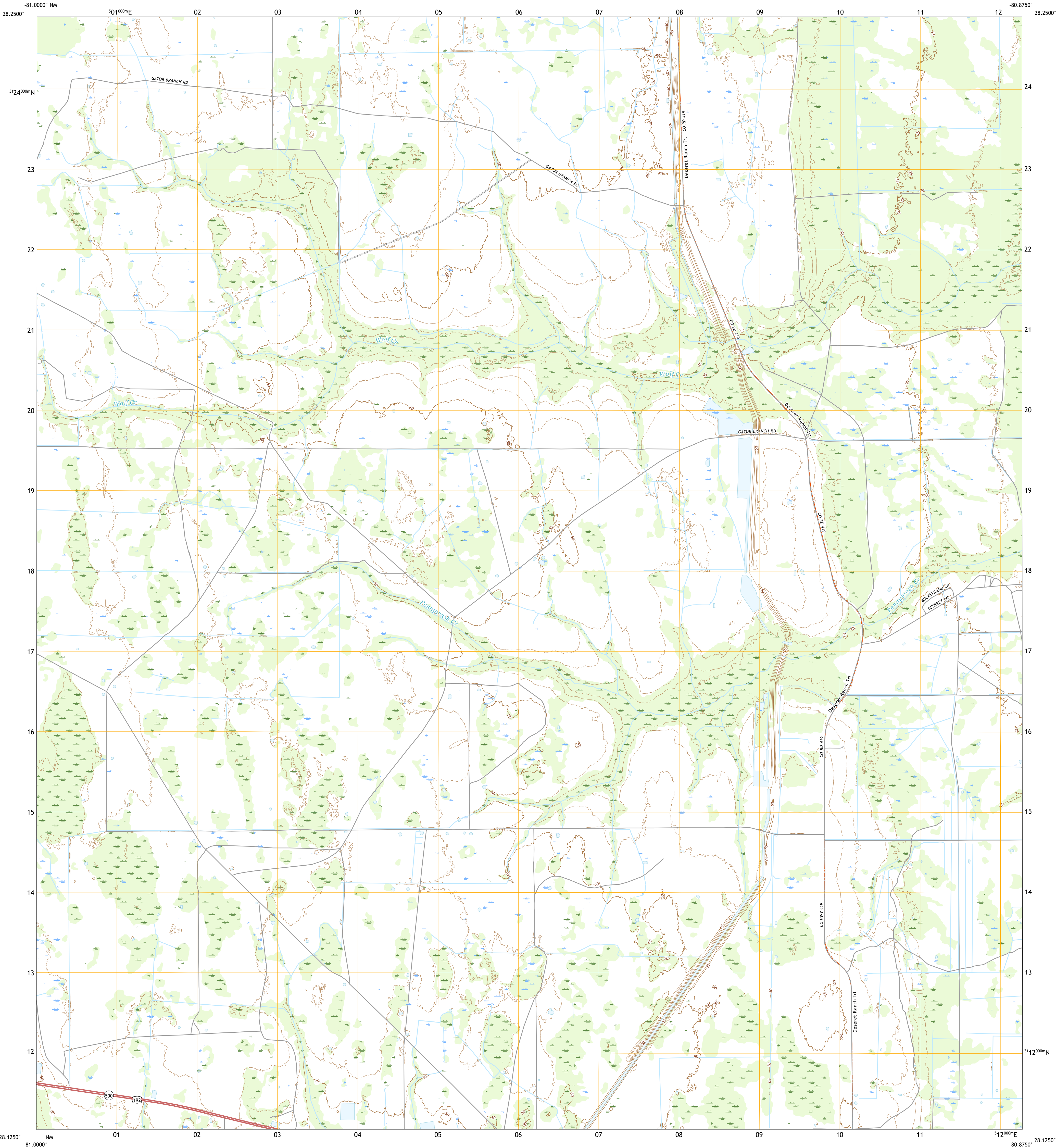




U.S. DEPARTMENT OF THE INTERIOR  
U.S. GEOLOGICAL SURVEY

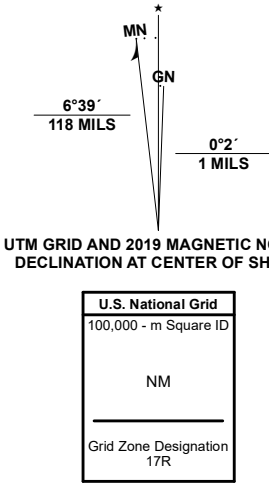


DEER PARK NW QUADRANGLE  
FLORIDA - OSCEOLA COUNTY  
7.5-MINUTE SERIES

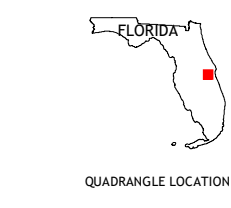


Produced by the United States Geological Survey  
North American Datum of 1983 (NAD83)  
World Geodetic System of 1984 (WGS84). Projection and  
1 000-meter grid/Universal Transverse Mercator, Zone 17R.  
This map is not a legal document. Boundaries may be  
generalized for this map scale. Private lands within government  
reservations may not be shown. Obtain permission before  
entering private lands.

Imagery	.....NAIP	December	2019
Roads	.....U.S. Census Bureau	2016	
Names	.....GNIS	Not Available	
Hydrography	.....National Hydrography Dataset	1899 - 2019	
Contours	.....National Elevation Dataset	2017 - 2019	
Boundaries	.....Multiple sources	see metadata file	2018 - 2019
Public Land Survey System	.....BLM	2020	
Wetlands	.....FWS National Wetlands Inventory	1984	



CONTOUR INTERVAL 5 FEET  
NORTH AMERICAN VERTICAL DATUM OF 1988  
This map was produced to conform with the  
National Geospatial Program US Topo Product Standard.



1	2	3
4	5	6
7	8	9

ADJOINING QUADRANGLES

ROAD CLASSIFICATION		
Expressway	Local Connector	Local Road
Secondary Hwy	Local Road	4WD
Ramp	US Route	State Route
Interstate Route		

DEER PARK NW, FL  
2021



NSN 7564301636046  
USGS REF. NO. USGSX24K11757