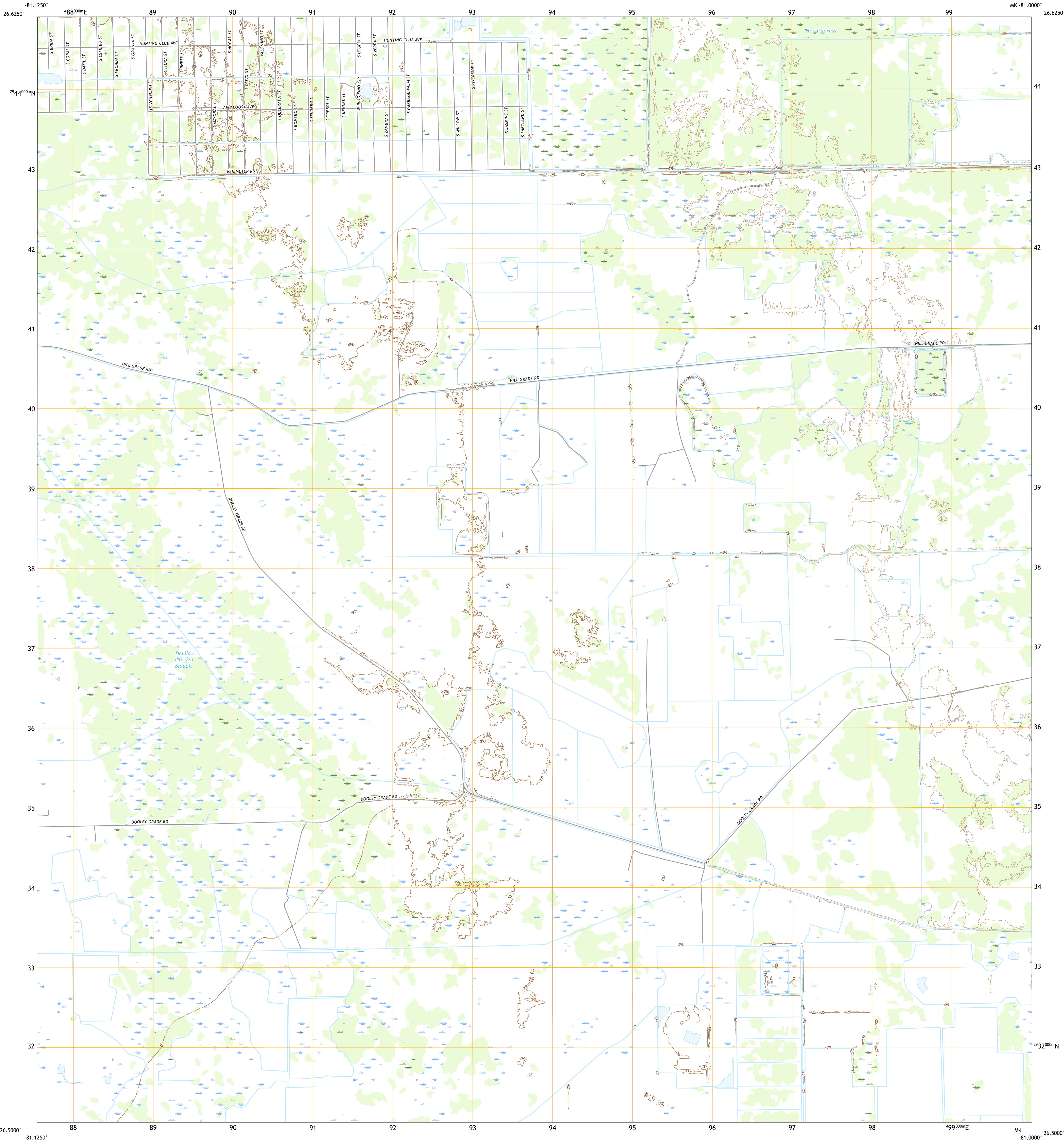




U.S. DEPARTMENT OF THE INTERIOR  
U.S. GEOLOGICAL SURVEY



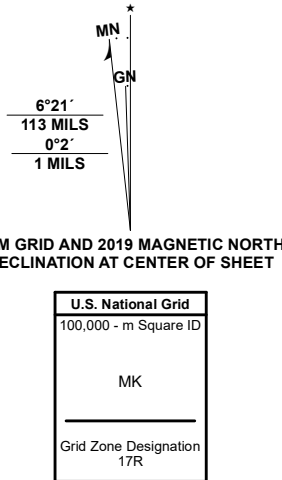
DEVILS GARDEN SLOUGH QUADRANGLE  
FLORIDA - HENDRY COUNTY  
7.5-MINUTE SERIES



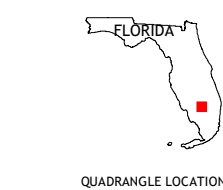
Produced by the United States Geological Survey

North American Datum of 1983 (NAD83)  
World Geodetic System of 1984 (WGS84), Projection and  
1 000-meter grid/Universal Transverse Mercator, Zone 17R  
This map is not a legal document. Boundaries may be  
generalized for this map scale. Private lands within government  
reservations may not be shown. Obtain permission before  
entering private lands.

Imagery.....NAIP, November 2019 - December 2019  
Roads.....U.S. Census Bureau, 2016  
Names.....GNS, 1979 - 2019  
Hydrography.....National Hydrography Dataset, 2005 - 2019  
Contours.....National Elevation Dataset, 2010 - 2018  
Boundaries.....Multiple sources: see metadata file 2018 - 2019  
Public Land Survey System.....BLM, 2020  
Wetlands.....FWS National Wetlands Inventory 2010



CONTOUR INTERVAL 5 FEET  
NORTH AMERICAN VERTICAL DATUM OF 1988  
This map was produced to conform with the  
National Geospatial Program US Topo Product Standard.



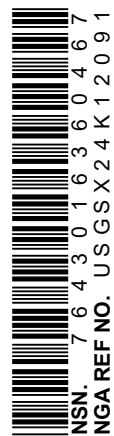
1	2	3
4	5	6
7	8	9

- 1 Grassy Marsh
- 2 Hog Cypress
- 3 Clewiston South
- 4 Graham Marsh
- 5 Lake Harbor SW
- 6 Crows Nest Hammock
- 7 Rocky Lake Strand
- 8 Little Cypress Swamp

ROAD CLASSIFICATION  
Expressway  
Secondary Hwy  
Ramp  
Local Connector  
Local Road  
4WD  
US Route  
State Route

DEVILS GARDEN SLOUGH, FL

2021



NSN 7540-01-603-0467  
NSA REF NO. USGSX24K12091