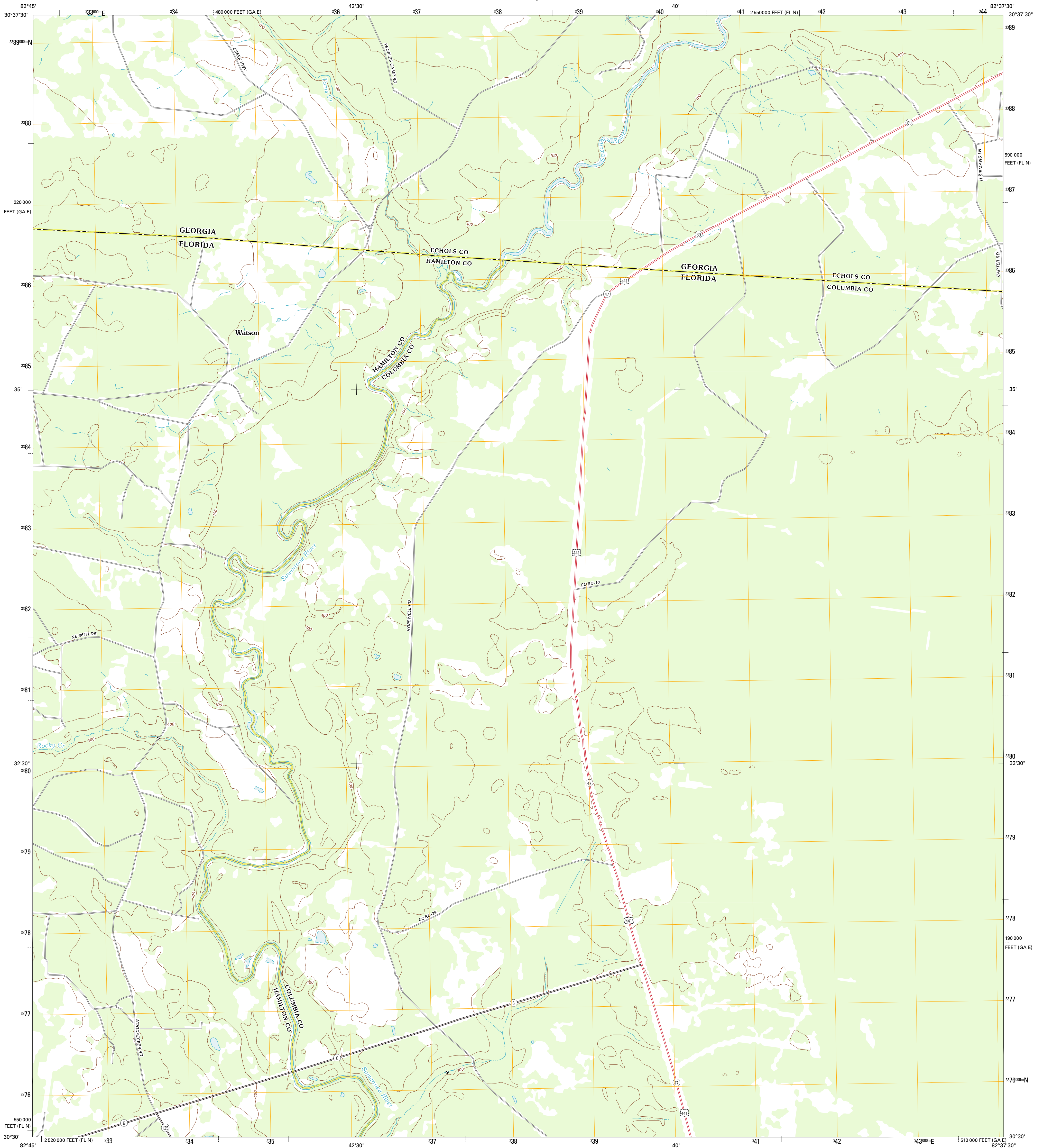




U.S. DEPARTMENT OF THE INTERIOR
U. S. GEOLOGICAL SURVEY

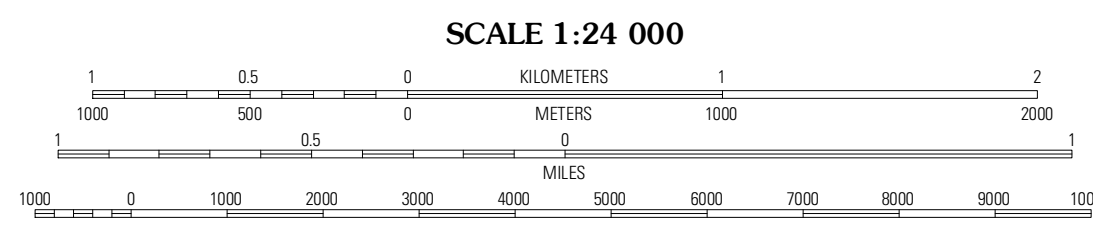
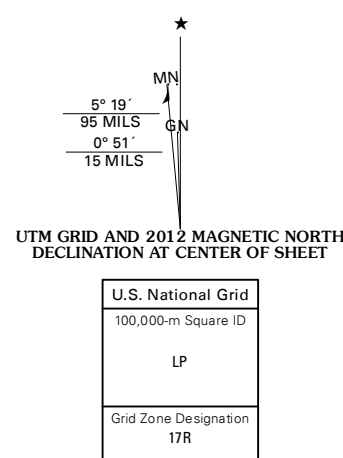


FARGO SW QUADRANGLE
FLORIDA-GEORGIA
7.5-MINUTE SERIES



Produced by the United States Geological Survey
North American Datum of 1983 (NAD83)
World Geodetic System of 1984 (WGS84) Projection and
1 000-meter grid; Universal Transverse Mercator, Zone 17R
10 000-foot ticks; Florida Coordinate System of 1983 (north
zone), Georgia Coordinate System of 1983 (east zone)

Image: NAD, June 2010
Roads: ©2006-2011 TomTom
Names: GNIS, 2011
Hydrography: National Hydrography Dataset, 2010
Contours: National Elevation Dataset, 2008
Boundaries: Census, IBWC, IBC, USGS, 1972 - 2010

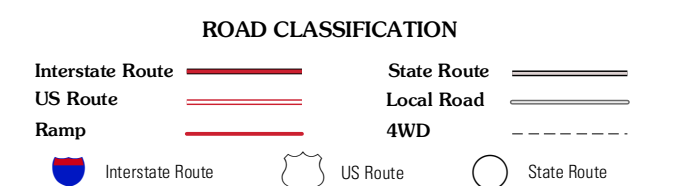


CONTOUR INTERVAL 10 FEET
NORTH AMERICAN VERTICAL DATUM OF 1988
This map was produced to conform with the
National Geospatial Program US Topo Product Standard, 2011.
A metadata file associated with this product is draft version 0.6.3



QUADRANGLE LOCATION

Pineland	Needmore	Fargo
Cypress Creek	Fargo SW	Council
Genoa	Benton	Fairview



FARGO SW, FL-GA
2012

ADJOINING 7.5' QUADRANGLES