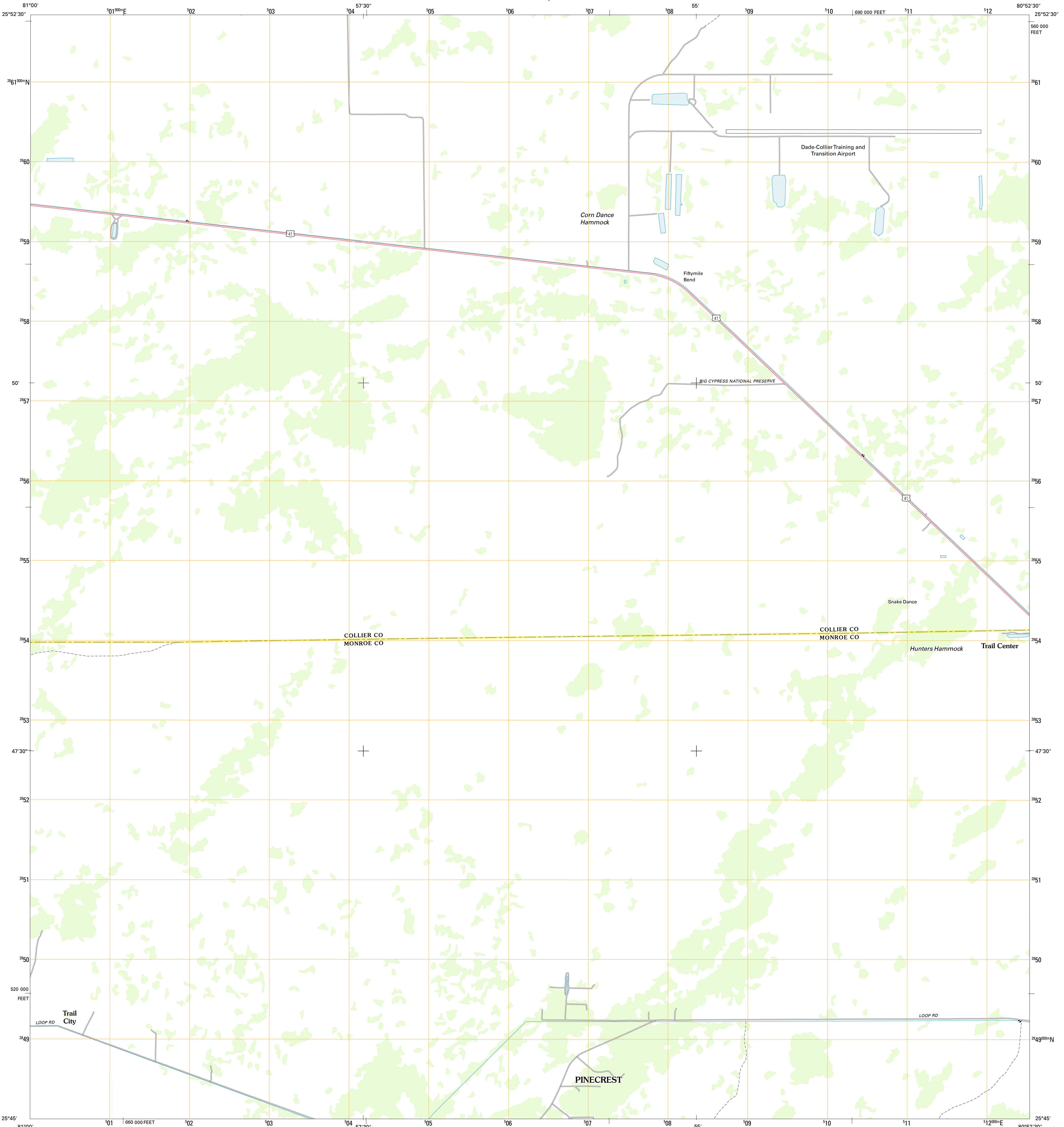




U.S. DEPARTMENT OF THE INTERIOR
U. S. GEOLOGICAL SURVEY

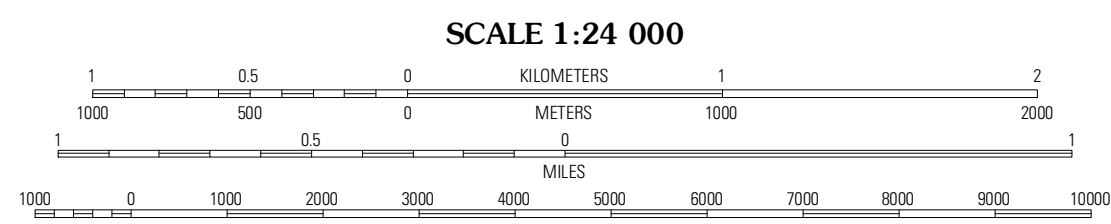
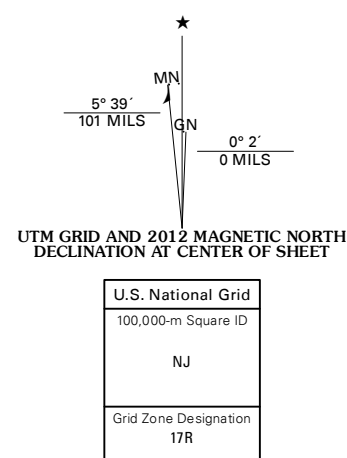


FIFTYMILE BEND QUADRANGLE
FLORIDA
7.5-MINUTE SERIES



Produced by the United States Geological Survey
North American Datum of 1983 (NAD83)
World Geodetic System of 1984 (WGS84). Projection and
1 000-meter grid: Universal Transverse Mercator, Zone 17R
10 000-foot ticks: Florida Coordinate System of 1983 (east
zone)

Imagery.....NAIP, October 2010
Roads.....©2006-2011 TomTom
Names.....GNIS, 2011
Hydrography.....National Hydrography Dataset, 2010
Contours.....Not Available
Boundaries.....Census, IBWC, IBC, USGS, 1972 - 2010



CONTOURS NOT PRESENT BECAUSE AVAILABLE ELEVATION
DATA DO NOT MEET ACCURACY REQUIREMENTS

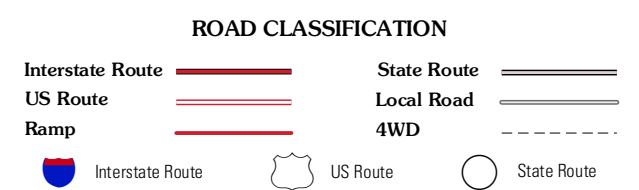
This map was produced to conform with the
National Geospatial Program US Topo Product Standard, 2011.
A metadata file associated with this product is draft version 0.6.3



QUADRANGLE LOCATION

Monroe Station NE	North of Fifty Mile Bend	North of Forty Mile Bend
Monroe Station	Fifty Mile Bend	Forty Mile Bend
Big Boy Lake	Loxmans Trail	Shark Valley Lookout Tower

ADJOINING 7.5' QUADRANGLES



FIFTYMILE BEND, FL
2012