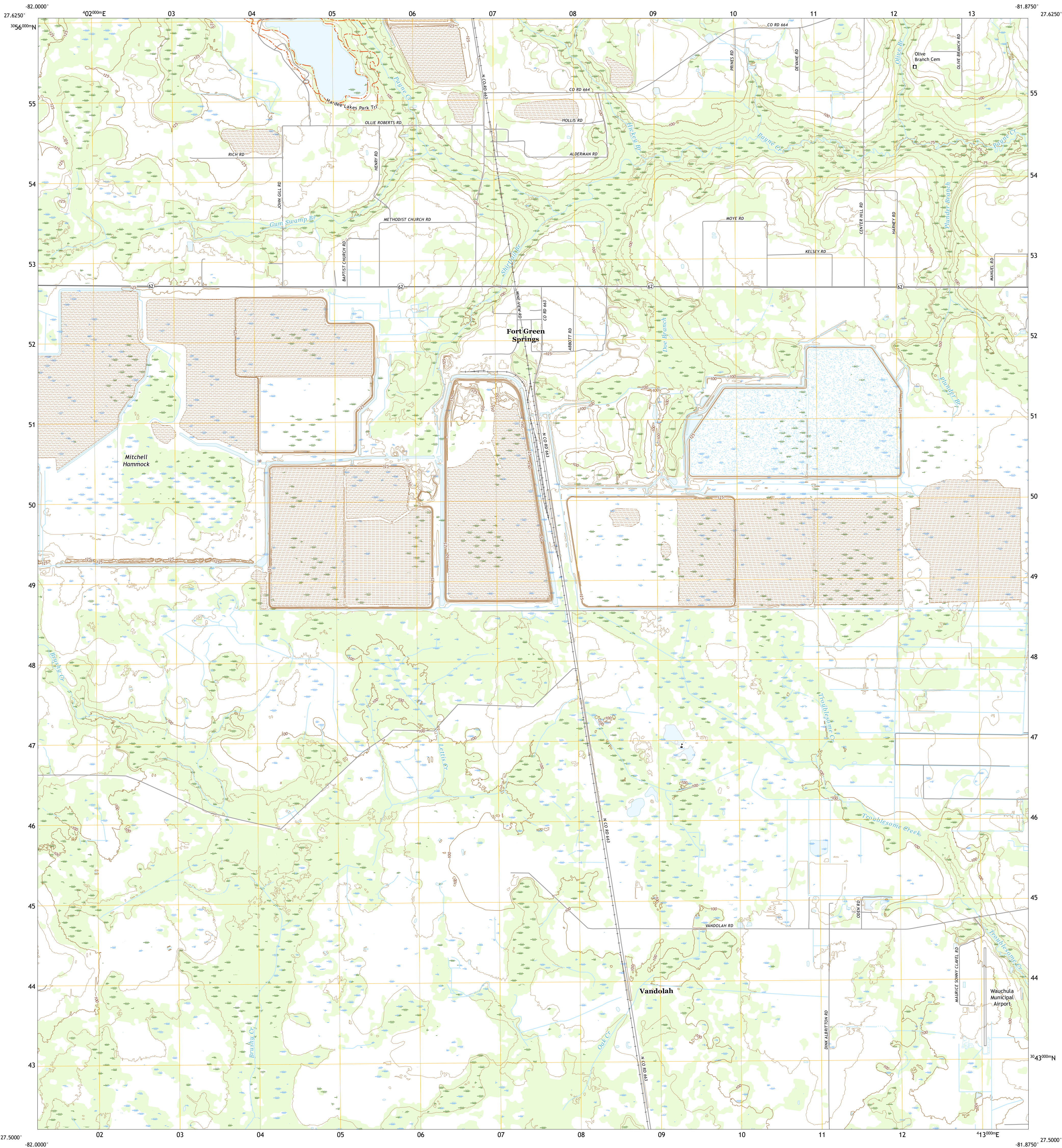




U.S. DEPARTMENT OF THE INTERIOR  
U.S. GEOLOGICAL SURVEY

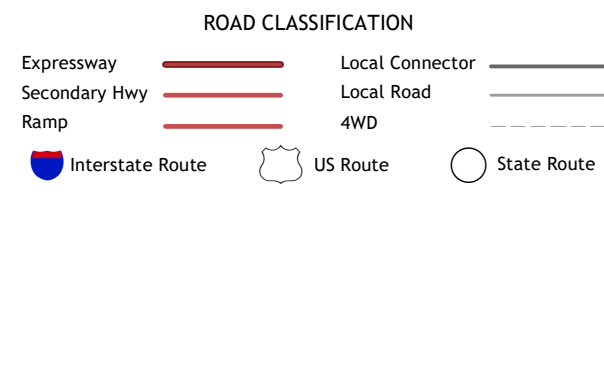
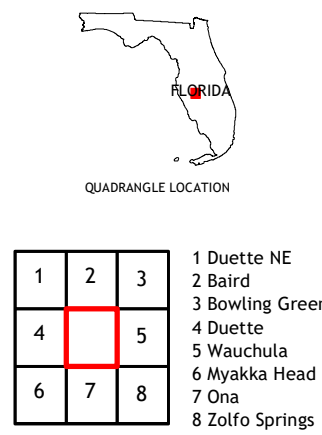
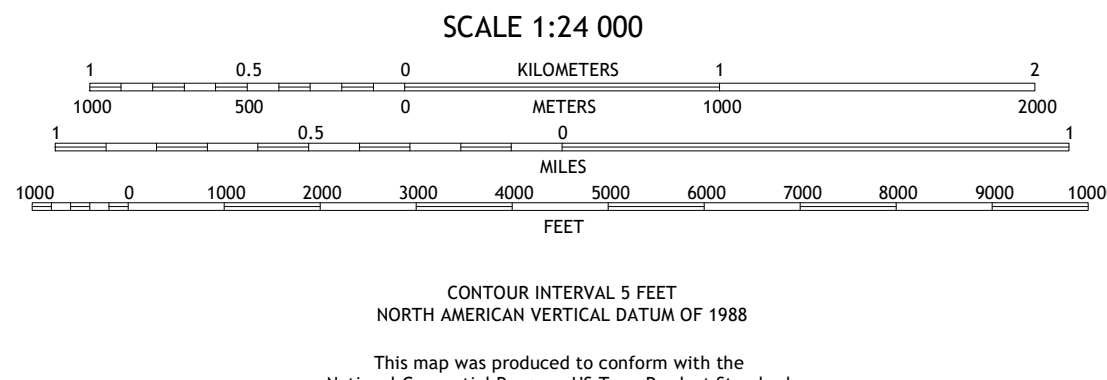
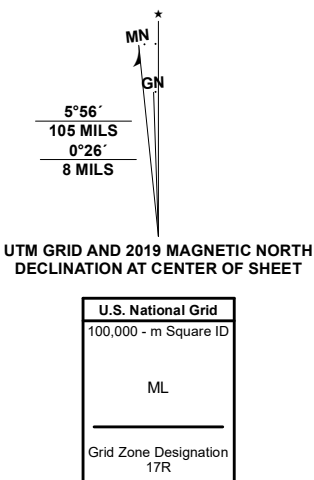


FORT GREEN QUADRANGLE  
FLORIDA - HARDEE COUNTY  
7.5-MINUTE SERIES



Produced by the United States Geological Survey  
North American Datum of 1983 (NAD83)  
World Geodetic System of 1984 (WGS84). Projection and  
1 000-meter grid/Universal Transverse Mercator, Zone 17R.  
This map is not a legal document. Boundaries may be  
generalized for this map scale. Private lands within government  
reservations may not be shown. Obtain permission before  
entering private lands.

Imagery.....NAIP, November 2019  
Roads.....U.S. Census Bureau, 2016  
Names.....GNIS, 1979 - 2020  
Hydrography.....National Hydrography Dataset, 1899 - 2019  
Contours.....National Elevation Dataset, 2009 - 2012  
Boundaries.....Multiple sources: see metadata file 2018 - 2019  
Public Land Survey System.....BLM, 2020  
Wetlands.....FWS National Wetlands Inventory 1972 - 2010



FORT GREEN, FL  
2021



NSN 1643016360558  
NSA REF NO. USGSX24K15910