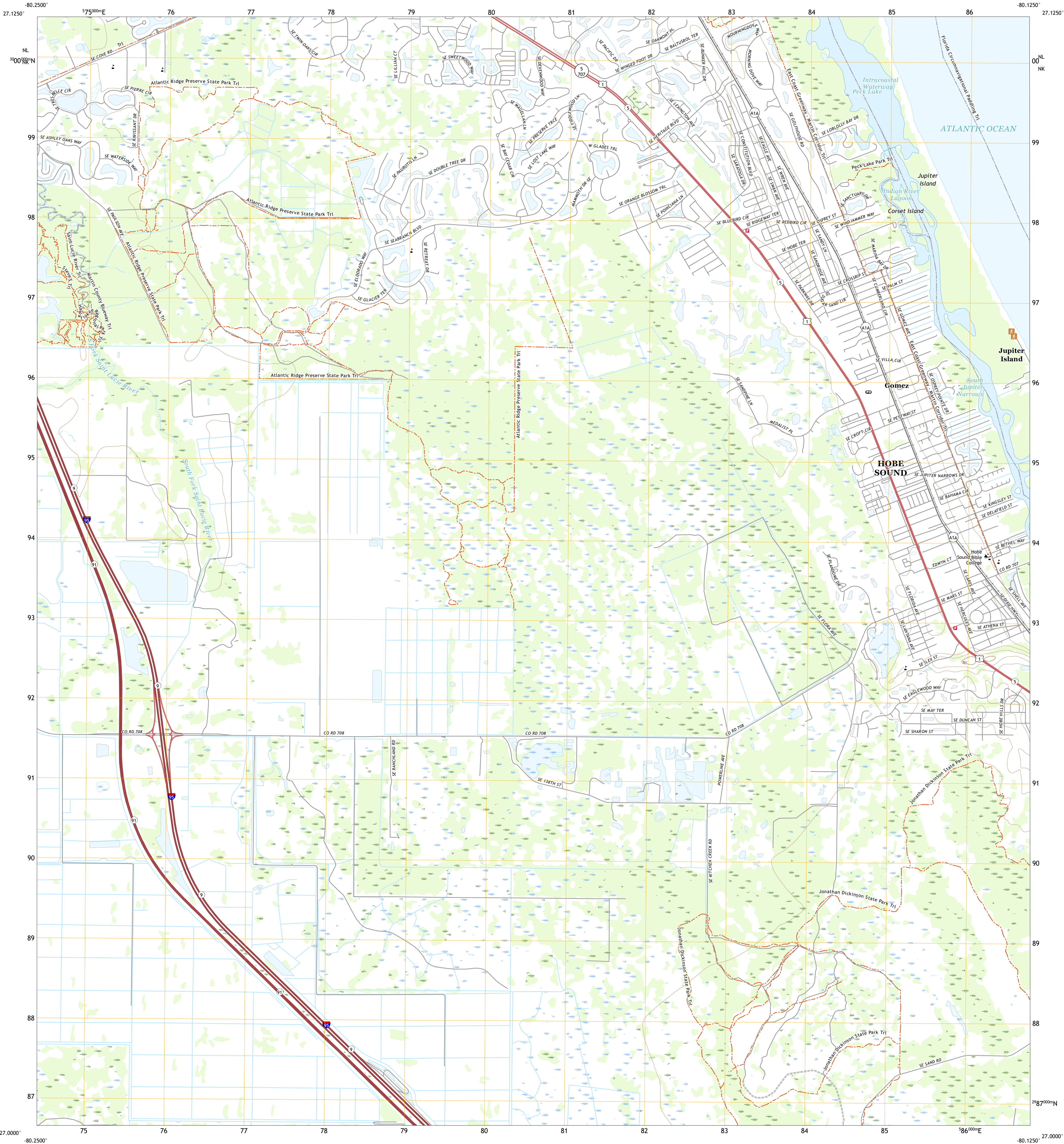




U.S. DEPARTMENT OF THE INTERIOR
U.S. GEOLOGICAL SURVEY



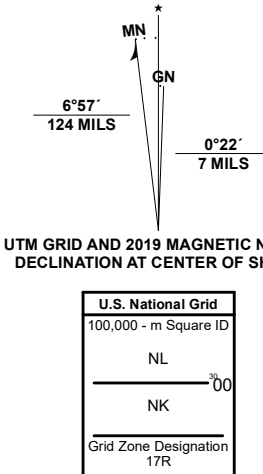
GOMEZ QUADRANGLE
FLORIDA - MARTIN COUNTY
7.5-MINUTE SERIES



Produced by the United States Geological Survey

North American Datum of 1983 (NAD83)
World Geodetic System of 1984 (WGS84), Projection and
1 000-meter grid/Universal Transverse Mercator, Zone 17R
This map is not a legal document. Boundaries may be
generalized for this map scale. Private lands within government
reservations may not be shown. Obtain permission before
entering private lands.

ImageryNAIP	December	2019
RoadsU.S. Census Bureau	2016	
NamesGNIS	1979	2020
HydrographyNational Hydrography Dataset	2005	2019
ContoursNational Elevation Dataset	1999	2018
BoundariesMultiple sources: see metadata file	2016	2019
Public Land Survey SystemBLM	2020	
WetlandsFWS National Wetlands Inventory	2007	2010



CONTOUR INTERVAL 10 FEET
NORTH AMERICAN VERTICAL DATUM OF 1988
This map was produced to conform with the
National Geospatial Program US Topo Product Standard.



1	2	1 Palm City
3	4	2 Saint Lucie Inlet
5	6	3 Indiantown SE
		4 Hobe Sound
		5 West of Road
		6 Road
		7 Jupiter

ROAD CLASSIFICATION		
Expressway	Local Connector	
Secondary Hwy	Local Road	
Ramp	4WD	
Interstate Route	US Route	State Route

GOMEZ, FL
2021

